

## Features

- Pressure-balancing diaphragm technology maintains outlet temperature within  $\pm 3^{\circ}\text{F}$  during water pressure fluctuations
- Antiscald protection
- A single handle controls both on/off activation and temperature setting
- 5-1/16" (129 mm) diverter bath spout with slip-fit connection
- Includes single-function 1.75 gpm (6.6 lpm) showerhead
- MasterClean™ sprayface features an easy-to-clean surface that withstands mineral buildup and maximizes spray performance
- Box includes: Showerhead, shower arm and flange, faceplate with lever handle, diverter bath spout with 1/2" slip-fit connection
- Coordinates with other products in the Buckley collection

## Material

- Premium material construction with metal handle ensures reliability and durability
- KOHLER finishes resist corrosion and tarnishing

## Installation

- Trim only; requires valve to complete installation (sold separately)

## Required Products/Accessories

- K-8304 Series Rite-Temp® Valve & Cartridge Kits (Qty 7)  
or  
K-8300 Series Rite-Temp® Valve Body Rough-ins (Qty 5)  
K-8305 Series Rite-Temp® Cartridges  
or  
K-8300 Series Rite-Temp® Valve Body Rough-ins (Qty 5)  
K-28305 Thermostatic cartridge  
or  
K-28304-K Thermostatic valve body and cartridge kit  
K-28304-KS Thermostatic valve body and cartridge with stops  
K-28304-KSL Thermostatic valve body and cartridge with loose stops

## Included Components

- K-35935 Wall-mount bath spout with diverter  
K-35948-G Single-function showerhead, 1.75 gpm  
K-TS35939-4 Rite-Temp® valve trim



## Codes/Standards


ASME A112.18.1/CSA B125.1  
DOE - Energy Policy Act 1992  
EPA WaterSense®  
California Energy Commission (CEC)

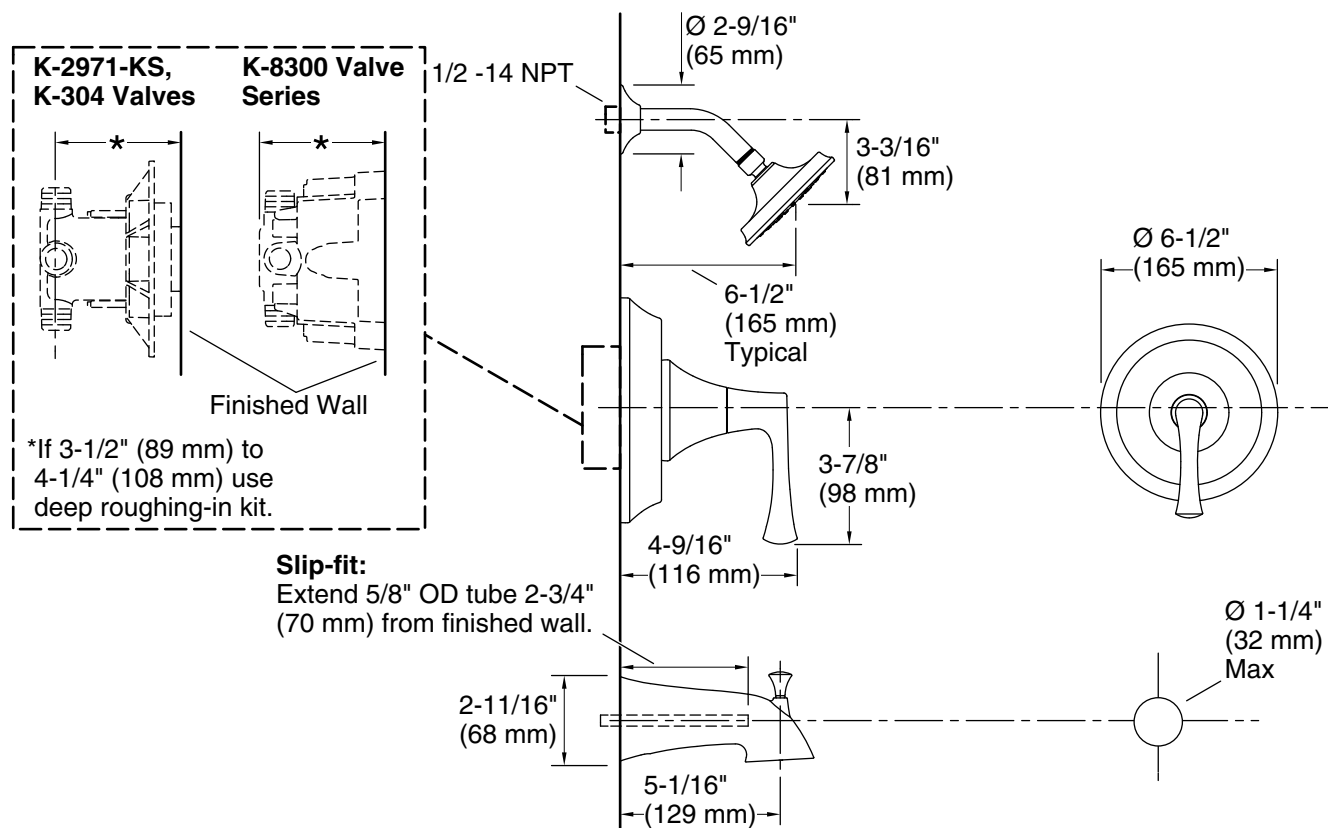
## KOHLER® Faucet Lifetime Limited Warranty

See website for detailed warranty information.

## Available Colors/Finishes

*Color tiles intended for reference only.*

Color	Code	Description
	CP	Polished Chrome
	BN	Vibrant® Brushed Nickel
	BL	Matte Black



## Technical Information

All product dimensions are nominal.

### Spout:

Spout reach: 5-1/16" (129 mm)

Shower/Rainhead rated max flow: 1.75 gal/min (6.6 l/min)

## Notes

Install the product according to the installation guide.

**NOTICE:** Risk of product damage. Long screws, for installing trim, can damage the K-2971-KS valve. Consult the trim installation guide to verify if the thin wall installation kit (88526) is needed.

Install straight pipe or tube drop of 7" (178 mm) to 18" (457 mm) with single elbow between the valve and the wall-mount spout.