

# KALLISTA®

## Handshower and Hose

---

### INSTALLATION INSTRUCTIONS

P24938, P24175

## INSTALLATION INSTRUCTIONS

### THANK YOU FOR CHOOSING KALLISTA

We appreciate your commitment to KALLISTA quality products. Please take a moment to review this manual before you install your KALLISTA product. If you encounter any installation or performance problems, please do not hesitate to contact us at the phone number listed at the bottom of the page.

### BEFORE YOU BEGIN

**NOTICE:** Choose an automatic compensating valve with the appropriate minimum flow rating, to assure your valve will provide safety at the lowest flow rates. For a handshower with a maximum flow rate of 2.0 gal/min (7.6 l/min), use with an automatic compensating valve rated 1.6 gal/min (6.1 l/min) or less.

**NOTE:** Plumbing codes may require a vacuum breaker be installed in-line to handshowers. Please consult with local plumbing codes.

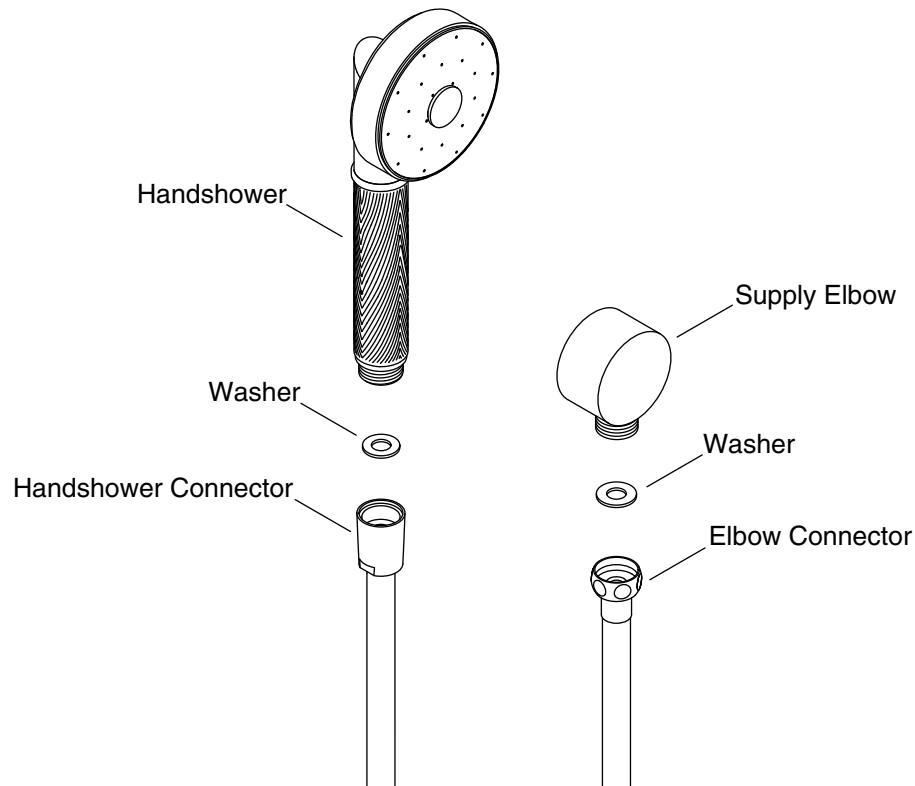
- Carefully plan the location of the wall supply elbow and fixed wall bracket to avoid the possibility of the handshower hose interfering with the operation of any faucets and/or drains.
- Please read all instructions before you begin.
- Observe all local plumbing and building codes.
- Inspect the supply piping for damage. Replace as necessary.
- KALLISTA reserves the right to make revisions in the design of products without notice, as specified in the Price Book.

### TOOLS AND MATERIALS



## INSTALLATION INSTRUCTIONS

## INSTALL THE HANDSHOWER AND HOSE



- Insert the washer into the threads of the elbow connector.
- Attach the elbow connector to the supply elbow. Tighten with an adjustable wrench.
- Run hot and cold water through the handshower hose to flush out dirt and debris.
- Insert the other washer into the threads of the handshower connector.
- Thread the handshower into the handshower connector. Tighten with an adjustable wrench.
- Run water through the handshower and hose. Check for leaks.