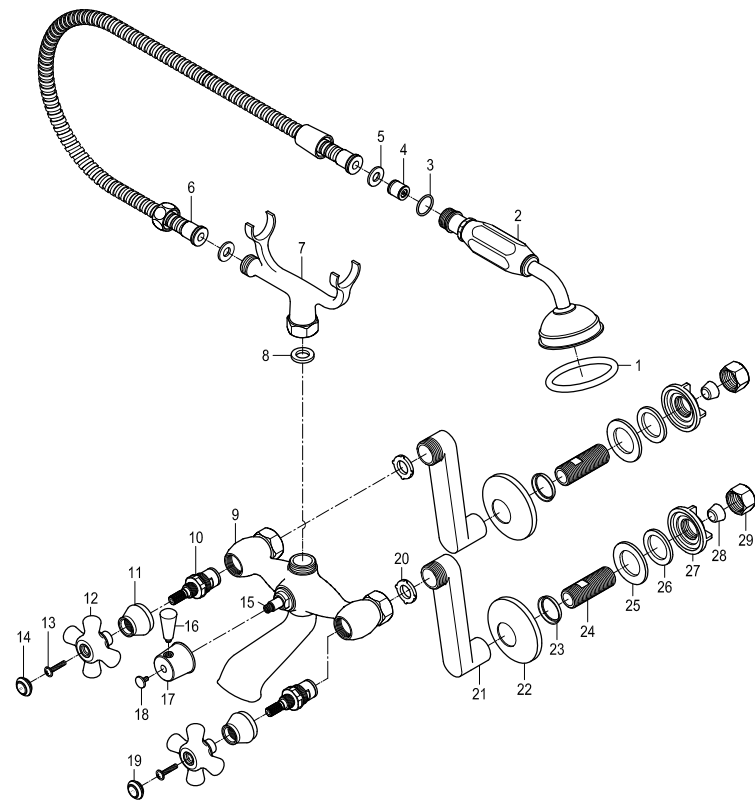
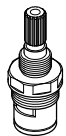


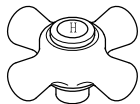
Parts:



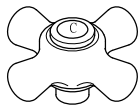
Replacement Parts:



Cartridge: KS1000H



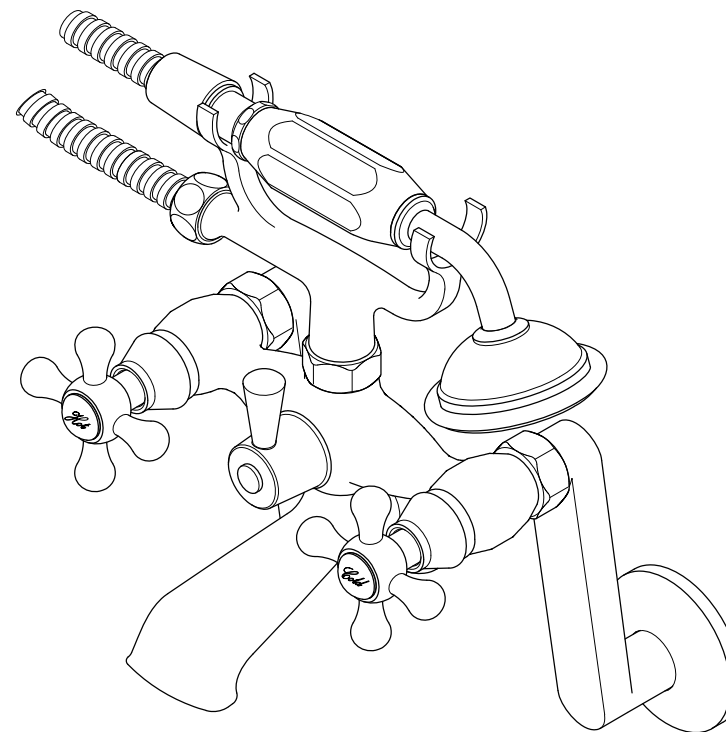
Hot Handle: KSH266PXH



Cold Handle: KSH266PXC

KINGSTON

KITCHEN & BATH



CARE AND MAINTENANCE OF YOUR FAUCET

Your Kingston Brass faucet has been finished to the most strict standards, However due to the high content of minerals in the water your finish after time may appear dull and tarnished, these are some do's and don'ts to maintain the luster on your faucet for many years to come.

DO

1. Clean your faucet with only a mild soap and water solution.
2. Dry your faucet after using it.
3. Give it a coat of Carnauba Wax periodically.
4. Remove hand shower periodically and soak overnight in a 50/50 solution of water and vinegar.

DON'T

1. Use Plumbers putty when installing the faucet.
2. Use any abrasive cleaning agents.

It may seem like a very simple and short list but it is that simple to maintain your faucet, looking shiny and new.

If your faucet is already looking somewhat dull and tarnished, before replacing it try cleaning it with a 50/50 solution of vinegar and water, you may need to soak some rags and wrap around those stubborn areas, leave over night and rinse completely in the morning, apply carnauba wax once you have removed the mineral deposits.

www.kingstonbrass.com

TOLL-FREE CUSTOMER SERVICE: 1-877-2-KBRASS

TECHNICAL SUPPORT E-mail: service@kingstonbrass.com

12775 Reservoir Street, Chino, CA 91710

KINGSTON

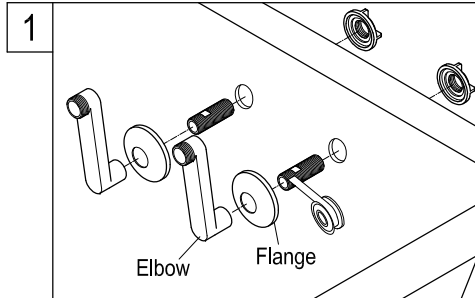
KITCHEN & BATH

INSTALLATION INSTRUCTIONS Tub Wall Mount Tub Filler with Hand Shower

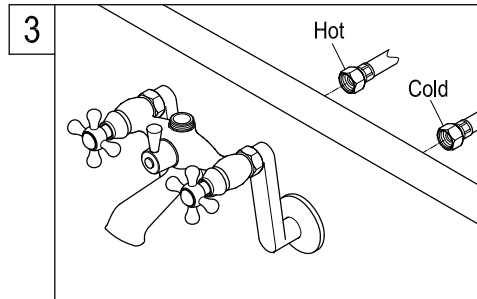
※ This faucet is to be installed on the tub wall with predrilled holes at 3" to 15-1/2" center to center.

BEFORE BEGINNING INSTALLATION:

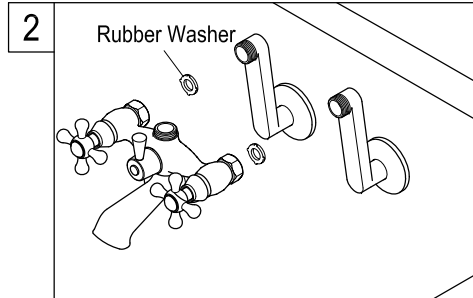
1. Flush both supply lines to clear any debris
2. Shut off both supply lines after flushing.



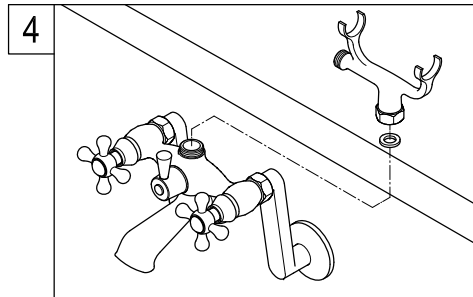
1. Insert flanges onto faucet elbow and after applying Teflon tape thread short side of brass nipple into the faucet elbows, insert faucet elbows into the tubs faucet holes and secure from behind with the lock nut, do not over tighten as you may need to adjust the elbows to the proper position.



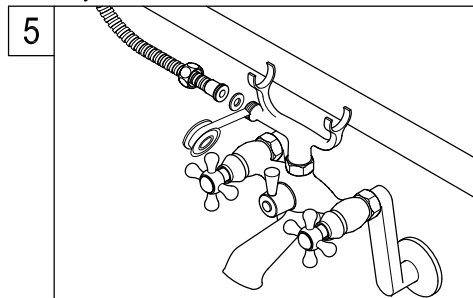
3. Apply Teflon tape to the faucet elbow's brass nipples and attach the supply lines.



2. Insert the black rubber washers onto the faucet inlets and thread faucet to the faucet elbows, tighten lock nuts on faucet elbows to fix the faucets position.

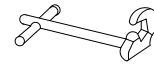


4. Apply Teflon tape to top faucet outlet and thread on handshower cradle, hose outlet may face either direction.



5. Apply Teflon tape to hose outlet on cradle and thread on hose, making sure the rubber washer has been inserted.

Need Tools:



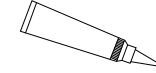
Basin Wrench



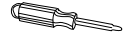
Adjustable Wrench



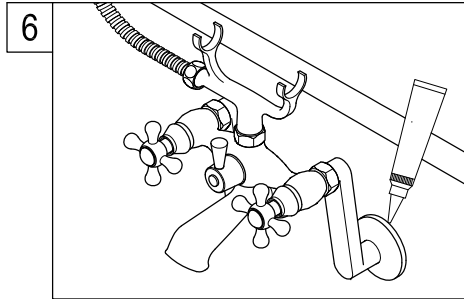
Teflon Tape



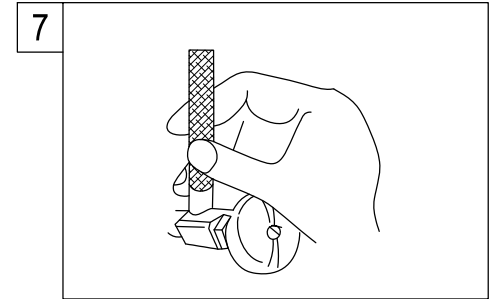
Silicone Sealant



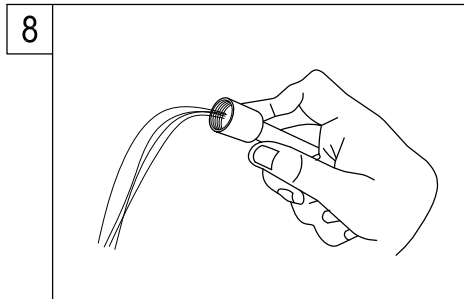
Screwdriver



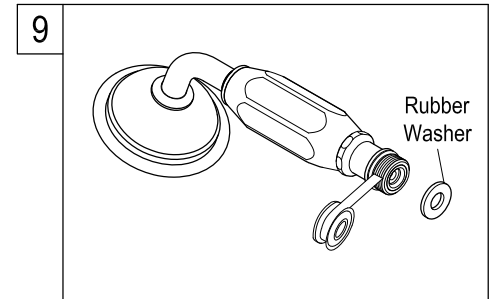
6. Apply silicone caulking to the underside of the elbow flanges and slide against the tub, clean any excess caulking.



7. Keeping faucet valves closed open both hot and cold water supplies, and check for leaks at elbows connection to wall and faucet.



8. If no leaks are visible, open both hot and cold valves on faucet and let water run for 1 minute; turn diverter clockwise to allow water to flow out of hose, let water run for 1 minute.



9. Apply Teflon tape on handshower inlet threads and thread on to hose, making sure the rubber washer has been inserted.

Warning!!!

- Do not put any weight, step, or hang on any part of this faucet, this may damage the faucet and cause water damage.
- This faucet was tested and meets ASME/ANSI standards of operation and torque tension; do not use pneumatic or electrical tools for its installation, as this may inadvertently over tighten the connection or attachment hardware of this faucet.
- It is recommended that the tub be situated in an area where the supply lines are not exposed to foot traffic, bumping into the supply lines may damage them and potentially cause a leak.