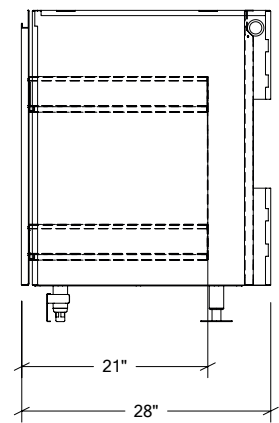
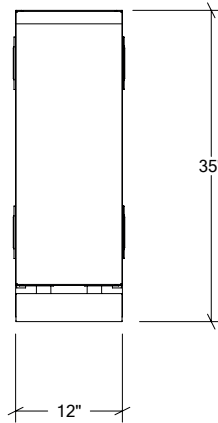


OUTDOOR KITCHEN CABINETS IN STAINLESS STEEL

HROK-STCC-800230 | LINE

12" Chef Cabinet Pull-Out Drawer



Specifications

Collection:	LINE
Width:	12"
Depth:	28"
Material:	Stainless Steel 304
Thickness:	18 ga
Finish:	Brushed
Nbr doors / drawers	1
Hinges Position:	n/a
Handle:	Standard
Installation:	Between Cabinets
Packing dimensions:	16 1/4" x 32 1/4" x 37 3/8"

Recommended accessories

3" Multifunction tray long	HROK-ACC-805002
7" Multifunction tray long	HROK-ACC-805003
3" Multifunction tray short	HROK-ACC-805004

Warranty

Home Refinements offers a LIMITED LIFETIME WARRANTY on the fixed components of its stainless steel cabinets as well as a 2-YEARS LIMITED WARRANTY for all mobile parts and hardware (Hinges, slides, locks) against defects of material and workmanship all of which is applied following the purchase date. This warranty is limited to defects or damages resulting from a normal residential use. For further details on our product warranty, please refer to our catalog or Web site.

Features

- Cabinet from the LINE collection showcasing an integrated handle design that accentuates the surfaces and volumes elegance
- Optimized storage space for spices, bottles and specialty utensils
- Two-levels shelf type pull-out unit with full extension
- Ideal for installation near the cooking station or prep counter
- Elegant and refined drawers with invisible concealed slides
- Quiet closing thanks to full-extension soft-close slides
- Self-standing cabinets that can be installed in island (option: closed back), backed to a wall or recessed
- Modular system gives the flexibility to create the ideal outdoor kitchen
- Simplified clip system for cabinet assembly
- Weather resistant cabinet due to efficient rubber gasket system on drawers
- Lock available as an option to secure the contents of cabinets and ensure a foolproof closure
- Ambient lighting integrated at toe-kick optional
- Distinct cabinets functional space and services space (plumbing, electricity, gas, ...) thanks to the double-back construction
- Easy installation of your choice of countertop thanks to the solid top of the cabinets (work surface not included)
- Elegant brushed finish
- Included with cabinet: clip-on toe-kick
- Easy maintenance thanks to sanitary standards inspired design without hard to reach corners
- Superior corrosion resistance: Grade 304 stainless steel (18/10) (option: grade 316 (recommended for salt environment))
- Soundproofing / insulation of front doors and panels reducing sound at closing
- Thin side structure results in optimized clear opening width
- Adjustable stainless steel feet, 2 of which allow anchoring on the ground
- Delivered fully assembled
- Made by hand in Canada

Available options



316



Lock



Back



Ext



Handle