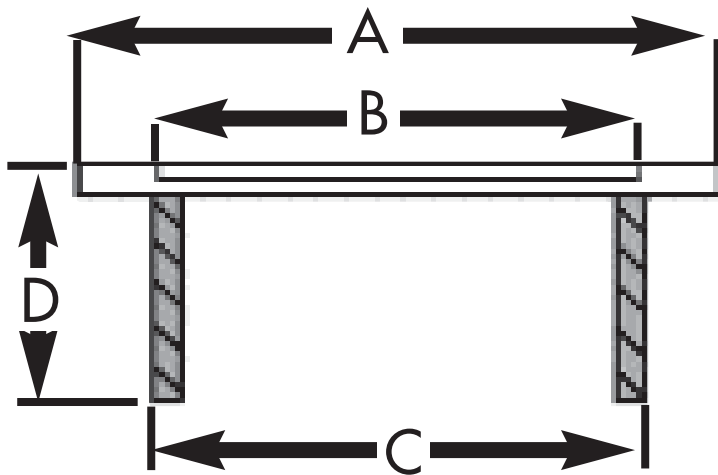


# SPECIFICATION SUBMITTAL SHEET

jones stephens corporation

## SEWER BOX



### features and benefits:

- Sewer lid marked "sewer"
- Water lid marked "water"
- Plain lid is unmarked
- All items classified as "medium duty" for top loading purposes:  
2,000 - 4,000 #'s

This product and others like it can be found in the Jones Stephens catalog. Call today to order your catalog or download it from our website: [www.jonesstephens.com](http://www.jonesstephens.com)

PART NO.	DESCRIPTION	A	B	C	D
☐ S36006	8" water lid and ring	11 1/4"	8 15/16"	8 7/8"	2 1/2"
☐ S36008	8" sewer lid and ring	11 1/4"	8 15/16"	8 7/8"	2 1/2"
☐ S36091	8" plain lid and ring	11 1/4"	8 15/16"	8 7/8"	2 1/2"
☐ S36011	10" water lid and ring	13 5/16"	10 7/8"	10 1/2"	2 1/2"
☐ S36010	10" sewer lid and ring	13 5/16"	10 7/8"	10 1/2"	2 1/2"
☐ S36096	10" plain lid and ring	13 5/16"	10 7/8"	10 1/2"	2 1/2"

jones stephens  
 3249 moody parkway • moody, alabama 35004  
 toll free phone: 1-800-355-6637 • toll free fax: 1-800-462-6991

[www.jonesstephens.com](http://www.jonesstephens.com)