

SPECIFICATION SUBMITTAL SHEET

j o n e s s t e p h e n s c o r p o r a t i o n

STAINLESS STEEL REPAIR CLAMP

MEETS THE FOLLOWING QUALIFICATIONS:

BANDS: STAINLESS STEEL TYPE 300

LUGS: MALLEABLE IRON PER ASTM A47 GRADE 32610

GASKET: GRADE 60 COMPOUNDED TO RESIST OIL, NAT. GAS,
ACIDS, ALKALIES, MOST AHF, WATER AND OTHER CHEMICALS.
TEMPERATURES -40 TO 212 DEGREES F.

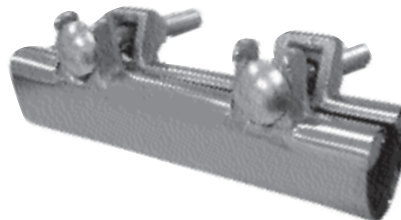
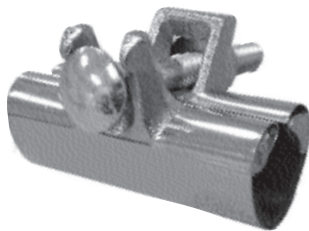
BOLTS & NUTS: ASTM A307

ALL CLAMPS ARE 3" WIDE UNLESS OTHERWISE SPECIFIED.

features and benefits:

- Plated lug, carriage bolts and nuts for corrosion protection
- 301 stainless steel clamp with neoprene gaskets for up to 180o F
- Long neck carriage bolts

This product and others like it can be found in the Jones Stephens catalog. Call today to order your catalog or download it from our website: www.plumbest.com



PART NO.	IPS/SCH. 40	CTS NOM.
3" ONE BOLT		
R30-375	3/8"	1/2"
R30-050	1/2"	3/4"
R30-075	3/4"	1"
R30-100	1"	1 1/4"
R30-125	1 1/4"	1 1/2"
R30-150	1 1/2"	-
R30-200	2"	-
R30-250	2 1/2"	-
R30-300	3"	-
R30-400	4"	-
R30-600	6"	-

PART NO.	IPS/SCH. 40	CTS NOM.
6" TWO BOLT		
R60-375	3/8"	1/2"
R60-050	1/2"	3/4"
R60-075	3/4"	1"
R60-100	1"	1 1/4"
R60-125	1 1/4"	1 1/2"
R60-150	1 1/2"	-
R60-200	2"	-
R60-250	2 1/2"	-
R60-300	3"	-
R60-400	4"	-
R60-600	6"	-

jones stephens corporation
3249 moody parkway • moody, alabama 35004
toll free phone: 1-800-355-6637 • toll free fax: 1-800-462-6991
www.plumbest.com