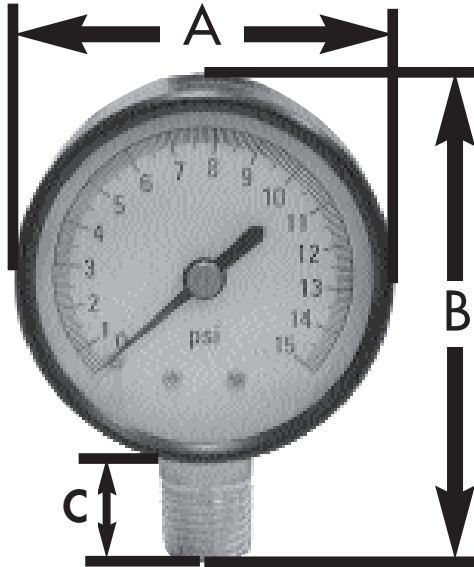


# SPECIFICATION SUBMITTAL SHEET

jones stephens corporation

## PRESSURE GAUGE



### features and benefits:

- 1/4" MIP brass lower connection
- Applicable with air, water, oil and gas (anything which does not attack brass)
- Not for use on oxygen service
- Class 2.5-2% accuracy
- Individually boxed
- Shatterproof face
- Steel case

PART NO.	DESCRIPTION	A	B	C
<b>2" FACE</b>				
<input type="checkbox"/> G60-015	15 PSI	2"	3"	1"
<input type="checkbox"/> G60-030	30 PSI	2"	3"	1"
<input type="checkbox"/> G60-060	60 PSI	2"	3"	1"
<input type="checkbox"/> G60-100	100 PSI	2"	3"	1"
<input type="checkbox"/> G60-160	160 PSI	2"	3"	1"
<input type="checkbox"/> G60-200	200 PSI	2"	3"	1"
<input type="checkbox"/> G60-300	300 PSI	2"	3"	1"
<b>2 1/2" FACE</b>				
<input type="checkbox"/> G61-015	15 PSI	2 1/2"	3 1/4"	1"
<input type="checkbox"/> G61-030	30 PSI	2 1/2"	3 1/4"	1"
<input type="checkbox"/> G61-060	60 PSI	2 1/2"	3 1/4"	1"
<input type="checkbox"/> G61-100	100 PSI	2 1/2"	3 1/4"	1"
<input type="checkbox"/> G61-160	160 PSI	2 1/2"	3 1/4"	1"
<input type="checkbox"/> G61-200	200 PSI	2 1/2"	3 1/4"	1"
<input type="checkbox"/> G61-300	300 PSI	2 1/2"	3 1/4"	1"
<b>3 1/2" FACE</b>				
<input type="checkbox"/> G62-030	30 PSI	3 1/2"	4 1/4"	1"
<input type="checkbox"/> G62-060	60 PSI	3 1/2"	4 1/4"	1"
<input type="checkbox"/> G62-100	100 PSI	3 1/2"	4 1/4"	1"
<input type="checkbox"/> G62-200	200 PSI	3 1/2"	4 1/4"	1"
<input type="checkbox"/> G62-300	300 PSI	3 1/2"	4 1/4"	1"

jones stephens corporation  
 3249 moody parkway • moody, alabama 35004  
 toll free phone: 1-800-355-6637 • toll free fax: 1-800-462-6991  
[www.plumbest.com](http://www.plumbest.com)