

SPECIFICATION SUBMITTAL SHEET

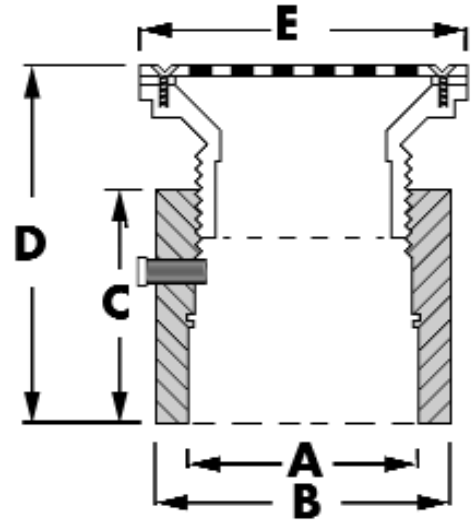
jones stephens corporation

3" OVER PIPE FIT BASE WITH 4" SPUDS

FITS OVER 4" SCHEDULE 40 DWV PIPE



- SS strainers are .06" thick
- PB, NB and CP strainers are .1875" thick
- Primer tapped, includes 1/2" plug



3" IPS plastic spuds with 6" round strainers

PVC	BASE	SPUD	ABS	BASE	SPUD	DIAMETER	A	B	C	D
<input type="checkbox"/> D53-100	<input type="checkbox"/> D52-450	<input type="checkbox"/> D56-105	<input type="checkbox"/> D53-101	<input type="checkbox"/> D52-460	<input type="checkbox"/> D57-107	6" SS	OVER 3" PIPE	6 1/8"	3 7/8"	4 13/16" - 5 3/4"
<input type="checkbox"/> D53-104	<input type="checkbox"/> D52-450	<input type="checkbox"/> D56-305	<input type="checkbox"/> D53-105	<input type="checkbox"/> D52-460	<input type="checkbox"/> D57-308	6" PB	OVER 3" PIPE	6 1/8"	3 7/8"	4 13/16" - 5 3/4"
<input type="checkbox"/> D53-108	<input type="checkbox"/> D52-450	<input type="checkbox"/> D56-304	<input type="checkbox"/> D53-109	<input type="checkbox"/> D52-460	<input type="checkbox"/> D57-309	6" PB w/ring	OVER 3" PIPE	6 1/2"	3 7/8"	4 15/16" - 5 13/16"
<input type="checkbox"/> D53-106	<input type="checkbox"/> D52-450	<input type="checkbox"/> D56-405	<input type="checkbox"/> D53-107	<input type="checkbox"/> D52-460	<input type="checkbox"/> D57-408	6" NB	OVER 3" PIPE	6 1/8"	3 7/8"	4 13/16" - 5 3/4"
<input type="checkbox"/> D53-110	<input type="checkbox"/> D52-450	<input type="checkbox"/> D56-404	<input type="checkbox"/> D53-111	<input type="checkbox"/> D52-460	<input type="checkbox"/> D57-409	6" NB w/ring	OVER 3" PIPE	6 1/2"	3 7/8"	4 15/16" - 5 13/16"
<input type="checkbox"/> D53-102	<input type="checkbox"/> D52-450	<input type="checkbox"/> D56-205	<input type="checkbox"/> D53-103	<input type="checkbox"/> D52-460	<input type="checkbox"/> D56-205	6" CP	OVER 3" PIPE	6 1/8"	3 7/8"	4 13/16" - 5 3/4"
<input type="checkbox"/> D53-288	<input type="checkbox"/> D52-450	<input type="checkbox"/> D56-210	<input type="checkbox"/> D53-289	<input type="checkbox"/> D52-460	<input type="checkbox"/> D56-210	6" CP w/ring	OVER 3" PIPE	6 1/2"	3 7/8"	4 15/16" - 5 13/16"

3" IPS plastic spuds with 7" square tops and 5" round strainers

PVC	BASE	SPUD	ABS	BASE	SPUD	DIAMETER	A	B	C	D
<input type="checkbox"/> D53-258	<input type="checkbox"/> D52-450	<input type="checkbox"/> D56-500	<input type="checkbox"/> D53-259	<input type="checkbox"/> D52-460	<input type="checkbox"/> D57-500	5" PB	OVER 3" PIPE	7"	3 7/8"	4 13/16" - 6 1/8"
<input type="checkbox"/> D53-260	<input type="checkbox"/> D52-450	<input type="checkbox"/> D56-501	<input type="checkbox"/> D53-261	<input type="checkbox"/> D52-460	<input type="checkbox"/> D57-501	5" NB	OVER 3" PIPE	7"	3 7/8"	4 13/16" - 6 1/8"

3" IPS metal spuds with 5" round strainers

PVC	BASE	SPUD	ABS	BASE	SPUD	DIAMETER	A	B	C	D
<input type="checkbox"/> D53-312	<input type="checkbox"/> D52-450	<input type="checkbox"/> D60-956	<input type="checkbox"/> D53-313	<input type="checkbox"/> D52-460	<input type="checkbox"/> D57-956	5" PB	OVER 3" PIPE	5"	3 7/8"	4 15/16" - 5 3/4"
<input type="checkbox"/> D53-306	<input type="checkbox"/> D52-450	<input type="checkbox"/> D60-955	<input type="checkbox"/> D53-307	<input type="checkbox"/> D52-460	<input type="checkbox"/> D57-955	5" NB	OVER 3" PIPE	5"	3 7/8"	4 15/16" - 5 3/4"