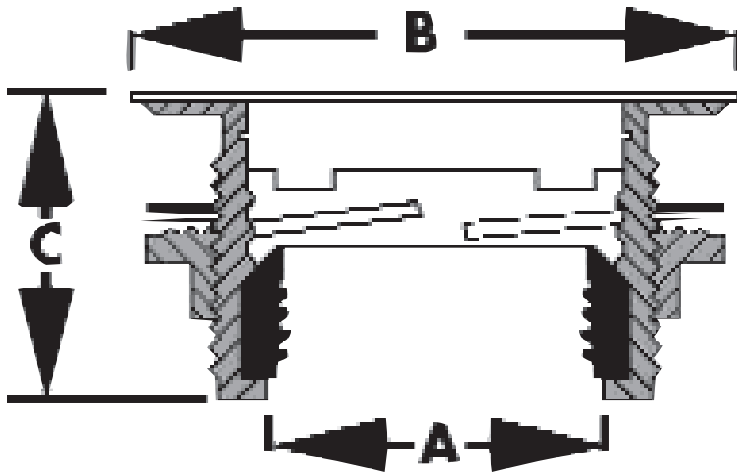
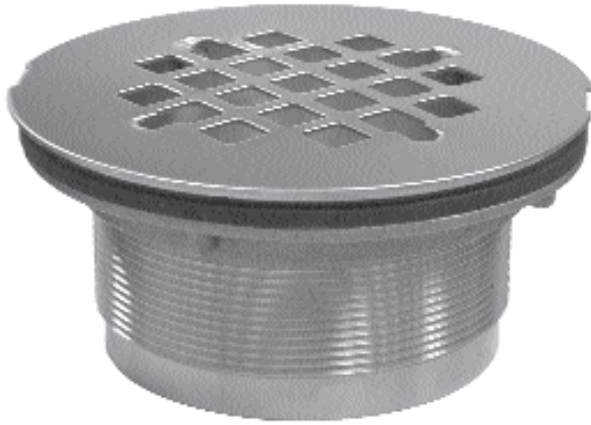


SPECIFICATION SUBMITTAL SHEET

j o n e s s t e p h e n s c o r p o r a t i o n

INSIDE CAULK SHOWER STALL DRAINS



features and benefits:

- Designed for prefab shower stalls
- Snap-in stainless steel strainer
- Fits 2" Schedule 40 plastic or cast iron pipe
- Can be adapted to no-caulk with gasket
- 4 1/4" OD strainer

This product and others like it can be found in the Jones Stephens catalog. Call today to order your catalog or download it from our website: www.plumbest.com

| PART NO. | SIZE | A | B | C |
|----------------------------------|---|--------|--------|--------|
| <input type="checkbox"/> D40-102 | 2" brass body SS strainer (141PT2) | 2 1/2" | 4 1/4" | 2" |
| <input type="checkbox"/> D40-202 | 2" drain with PB strainer | 2 1/2" | 4 1/4" | 2" |
| <input type="checkbox"/> D40-101 | Gasket to make unit no-caulk | | | |
| <input type="checkbox"/> D40-103 | 2" drain w/ SS strainer (101TPT2) | 2 1/4" | 2" | 4 1/4" |
| <input type="checkbox"/> D40-203 | 2" drain w/ PB strainer | 2 1/4" | 2" | 4 1/4" |
| <input type="checkbox"/> D40-104 | 1 1/2" drain w/ SS strainer (101TPT1 1/2) | 1 3/4" | 2" | 4 1/4" |
| <input type="checkbox"/> D40-204 | 1 1/2" drain w/ PB strainer | 1 3/4" | 2" | 4 1/4" |

jones stephens corporation
 3249 moody parkway • moody, alabama 35004
 toll free phone: 1-800-355-6637 • toll free fax: 1-800-462-6991
www.plumbest.com