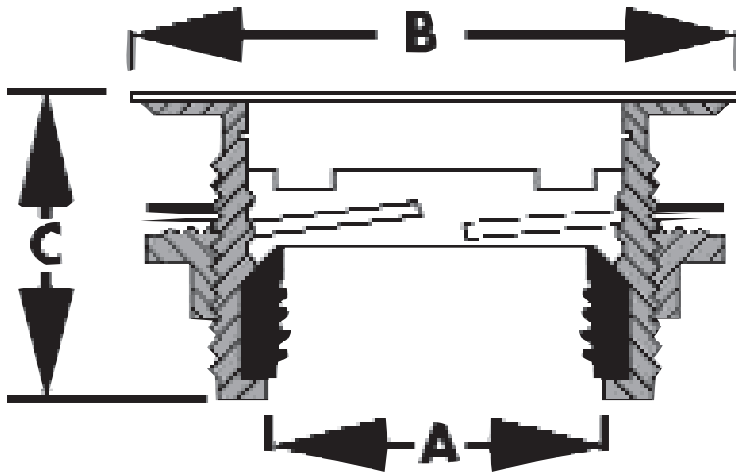
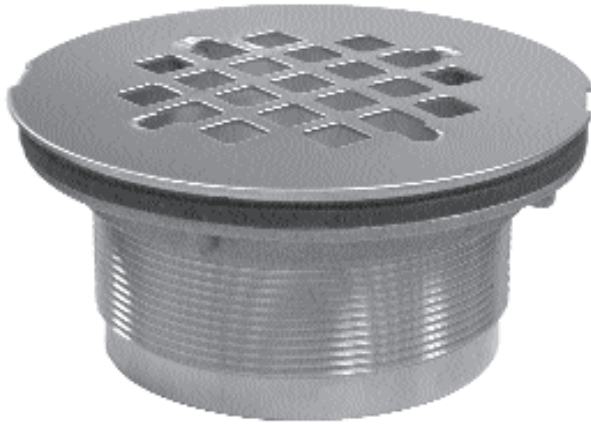


# SPECIFICATION SUBMITTAL SHEET

j o n e s   s t e p h e n s   c o r p o r a t i o n

## INSIDE CAULK SHOWER STALL DRAINS



### features and benefits:

- Designed for prefab shower stalls
- Snap-in stainless steel strainer
- Fits 2" Schedule 40 plastic or cast iron pipe
- Can be adapted to no-caulk with gasket
- 4<sup>1</sup>/<sub>4</sub>" OD strainer

This product and others like it can be found in the Jones Stephens catalog. Call today to order your catalog or download it from our website: [www.plumbest.com](http://www.plumbest.com)

PART NO.	SIZE	A	B	C
<input type="checkbox"/> D40-102	2" brass body SS strainer (141PT2)	2 1/2"	4 1/4"	2"
<input type="checkbox"/> D40-202	2" drain with PB strainer	2 1/2"	4 1/4"	2"
<input type="checkbox"/> D40-101	Gasket to make unit no-caulk			
<input type="checkbox"/> D40-103	2" drain w/ SS strainer (101TPT2)	2 1/4"	2"	4 1/4"
<input type="checkbox"/> D40-203	2" drain w/ PB strainer	2 1/4"	2"	4 1/4"
<input type="checkbox"/> D40-104	1 1/2" drain w/ SS strainer (101TPT1 1/2)	1 3/4"	2"	4 1/4"
<input type="checkbox"/> D40-204	1 1/2" drain w/ PB strainer	1 3/4"	2"	4 1/4"

jones stephens corporation  
 3249 moody parkway • moody, alabama 35004  
 toll free phone: 1-800-355-6637 • toll free fax: 1-800-462-6991  
[www.plumbest.com](http://www.plumbest.com)