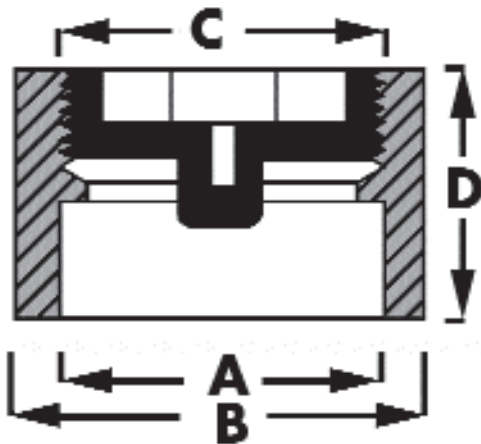


SPECIFICATION SUBMITTAL SHEET

j o n e s s t e p h e n s c o r p o r a t i o n

FIT-FLUSH CLEANOUT



features and benefits:

- 2" x 3" fits over 2" or inside 3" Schedule 40 DWV pipe
- 3" x 4" fits over 3" or inside 4" Schedule 40 DWV pipe
- Built in stop
- Fits flush every time!

This product and others like it can be found in the Jones Stephens catalog. Call today to order your catalog or download it from our website: www.plumbest.com

| PART NO. | PLUG SIZE | A | B | C | D |
|----------------------------------|-----------|----|----|----|--------|
| <input type="checkbox"/> C61-023 | 2" x 3" | 2" | 3" | 2" | 2" |
| <input type="checkbox"/> C61-034 | 3" x 4" | 3" | 4" | 3" | 2 1/2" |

jones stephens corporation
3249 moody parkway • moody, alabama 35004
toll free phone: 1-800-355-6637 • toll free fax: 1-800-462-6991
www.plumbest.com