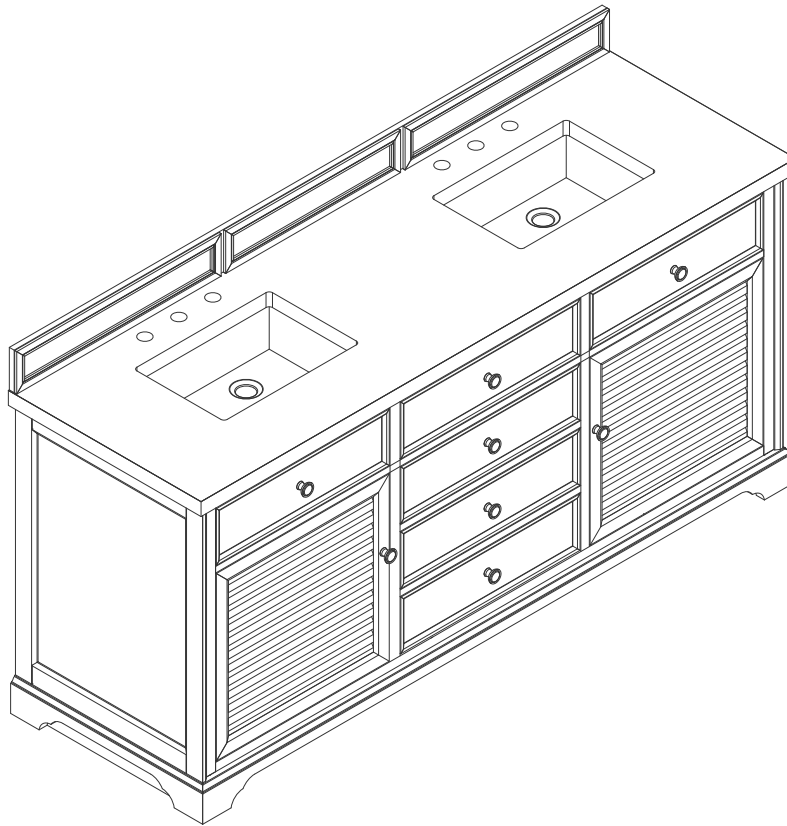


72" SAVANNAH VANITY

JAMES MARTIN
VANITIES

238-104-5711



Features and Materials

Solids: Ash

Veneers: Red OAK

Panels: Plywood

Installation Type: Floor Standing

Number of Basins: Two, with optional 3cm top

VanityTop Included: NO, Optional 3cm Tops Available with Sinks

Basins Included: NO

Overflow: Yes, Front Facing

Optional Wooden Backsplash

Number of Doors: Two

Number of Drawers: Three

Assembly Type: Installation of optional 3cm top with sink

Drawer Box Material and Construction: 12mm Plywood/English Dovetail Joinery

Hardware Material and Finish: Zinc Alloy in Antique Pewter

Fits Drain Hole Size: 1 3/4"

Full Extension, Soft Close Glides

European Soft Close Hinges

Aluminum Laminate Drawer Liners

Adjustable Levelers

Dimension

Width: 71-3/4"

Depth: 23-1/2"

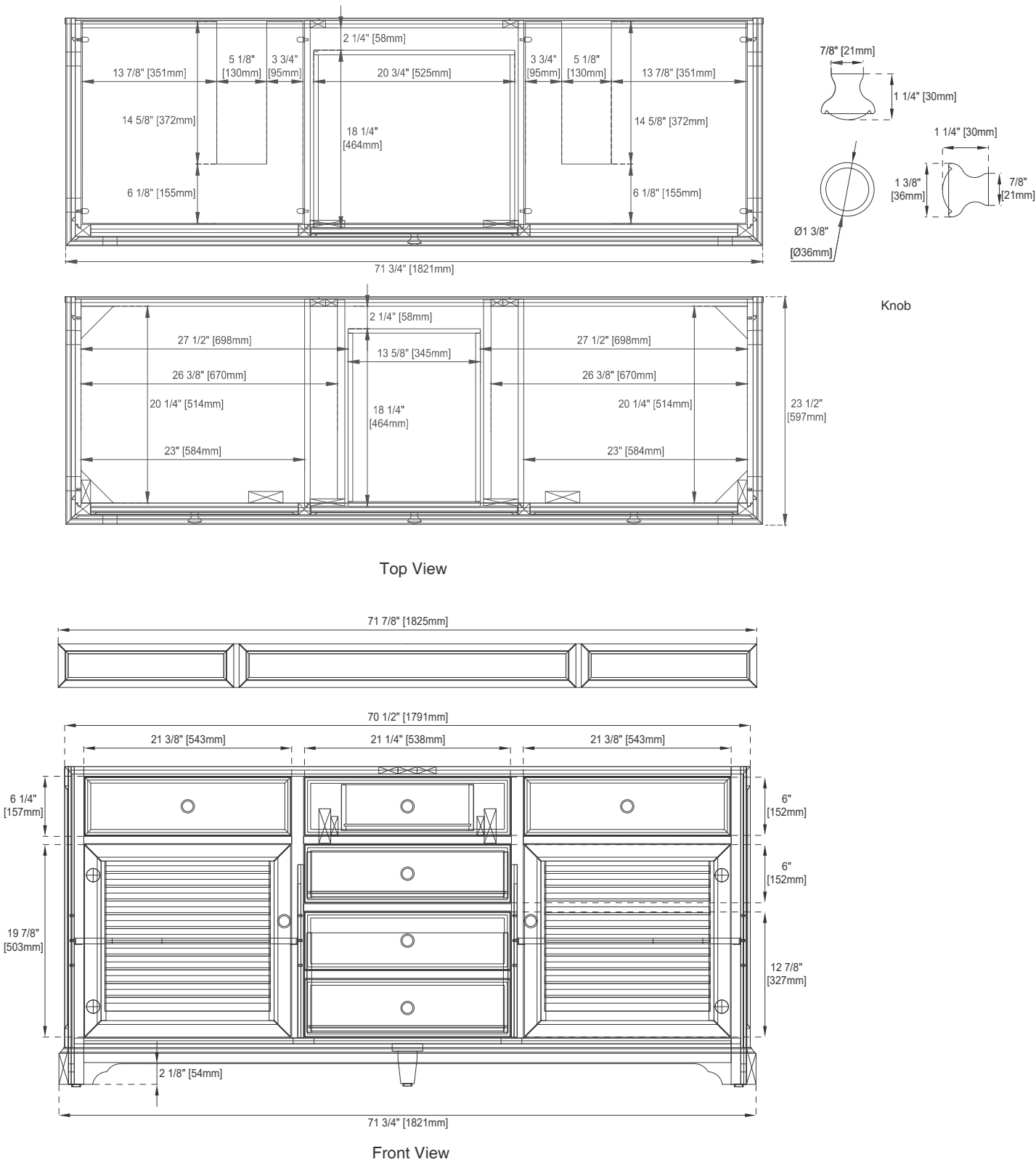
Height: 32-3/4"

Rough-In Height: 21-1/2"

72" SAVANNAH VANITY

JAMES MARTIN VANITIES

238-104-5711



All dimensions are nominal

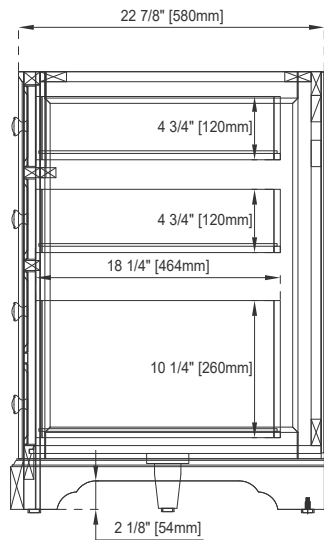
Diagrams are of cabinet only- James Martin Optional Countertops and sinks are not shown

Visit website for warranty and installation information
www.jamesmartinvanities.com

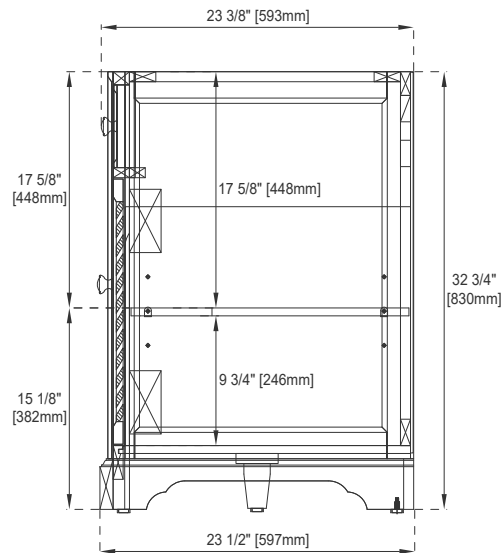
72" SAVANNAH VANITY

JAMES MARTIN
VANITIES

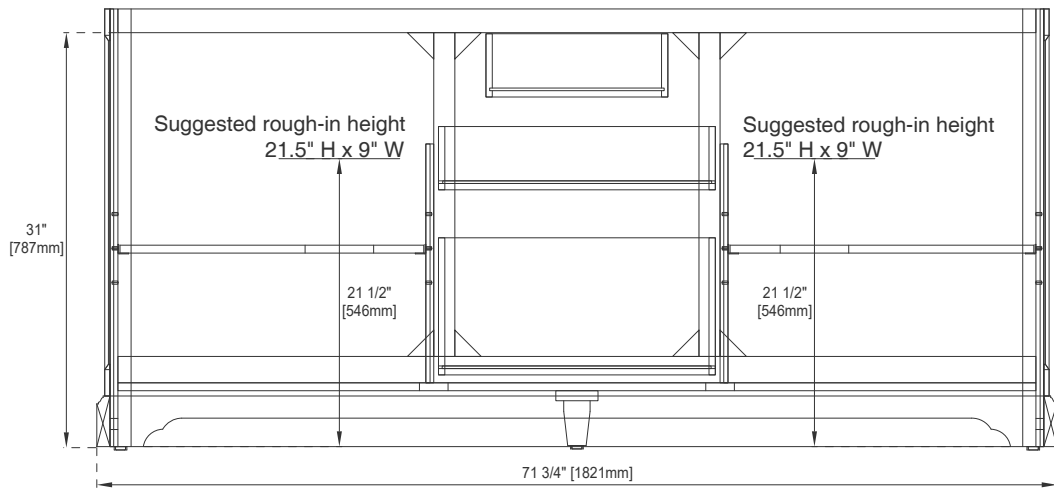
238-104-5711



Side View 1



Side View 2



Back View

All dimensions are nominal
Diagrams are of cabinet only- James Martin Optional Countertops and sinks are not shown

Visit website for warranty and installation information
www.jamesmartinvanities.com