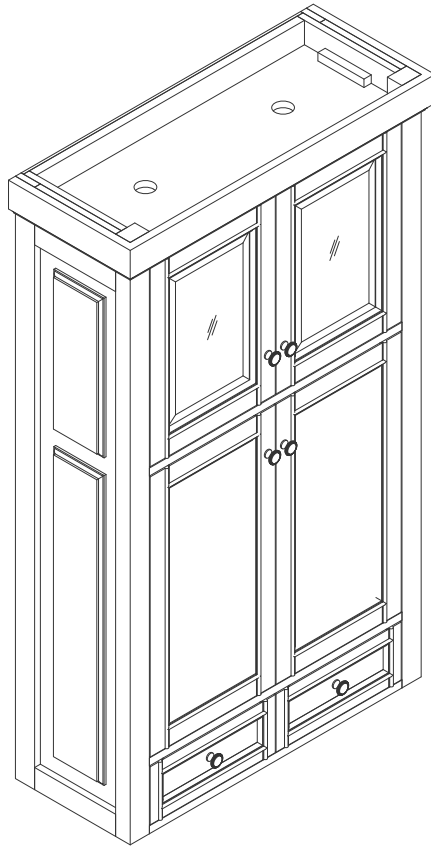


30" DE SOTO DOUBLE TOWER HUTCH

825-H30-BW

JAMES MARTIN
VANITIES



Features and Materials

Solids: Yellow Poplar
Panels: Plywood & MDF
Installation Type: Floor Standing
Number of Doors: Four
Number of Drawers: Two
Number of Tip Outs: 0
LED Light: YES
Assembly Required: YES
USB/Power Component: YES (ETL5011080)
Drawer Box Material and Construction: 15mm Poplar/English Dovetail Joinery
Hardware Material and Finish: Zinc Alloy in Satin Nickel Color
Full Extension, Soft Close Glides
European Soft Close Hinges
Aluminum Laminate Drawer Liners

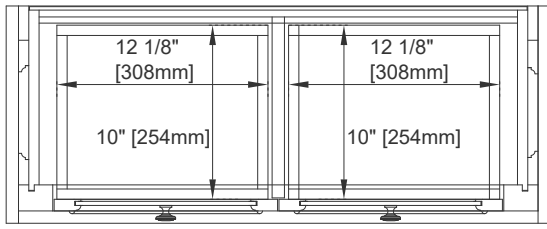
Dimension

Width: 31-1/4"
Depth: 12-1/2"
Height: 53-1/2"

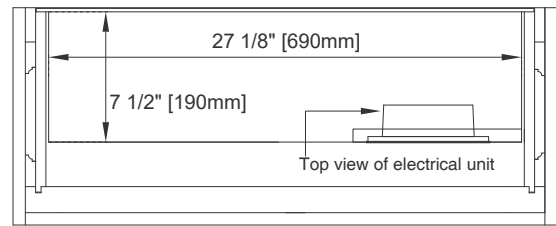
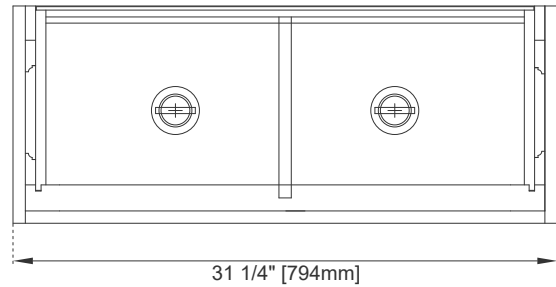
30" DE SOTO DOUBLE TOWER HUTCH

JAMES MARTIN VANITIES

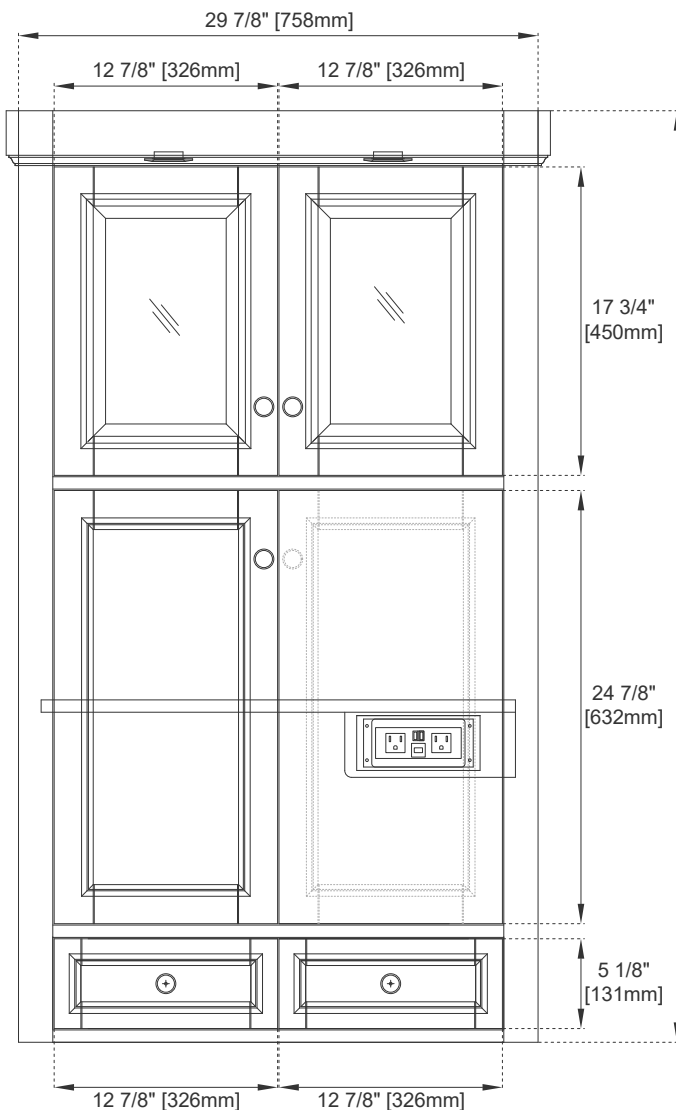
825-H30-BW



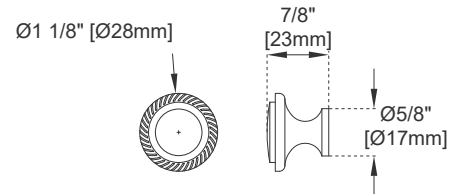
Top View



Top View



Front View



Knob

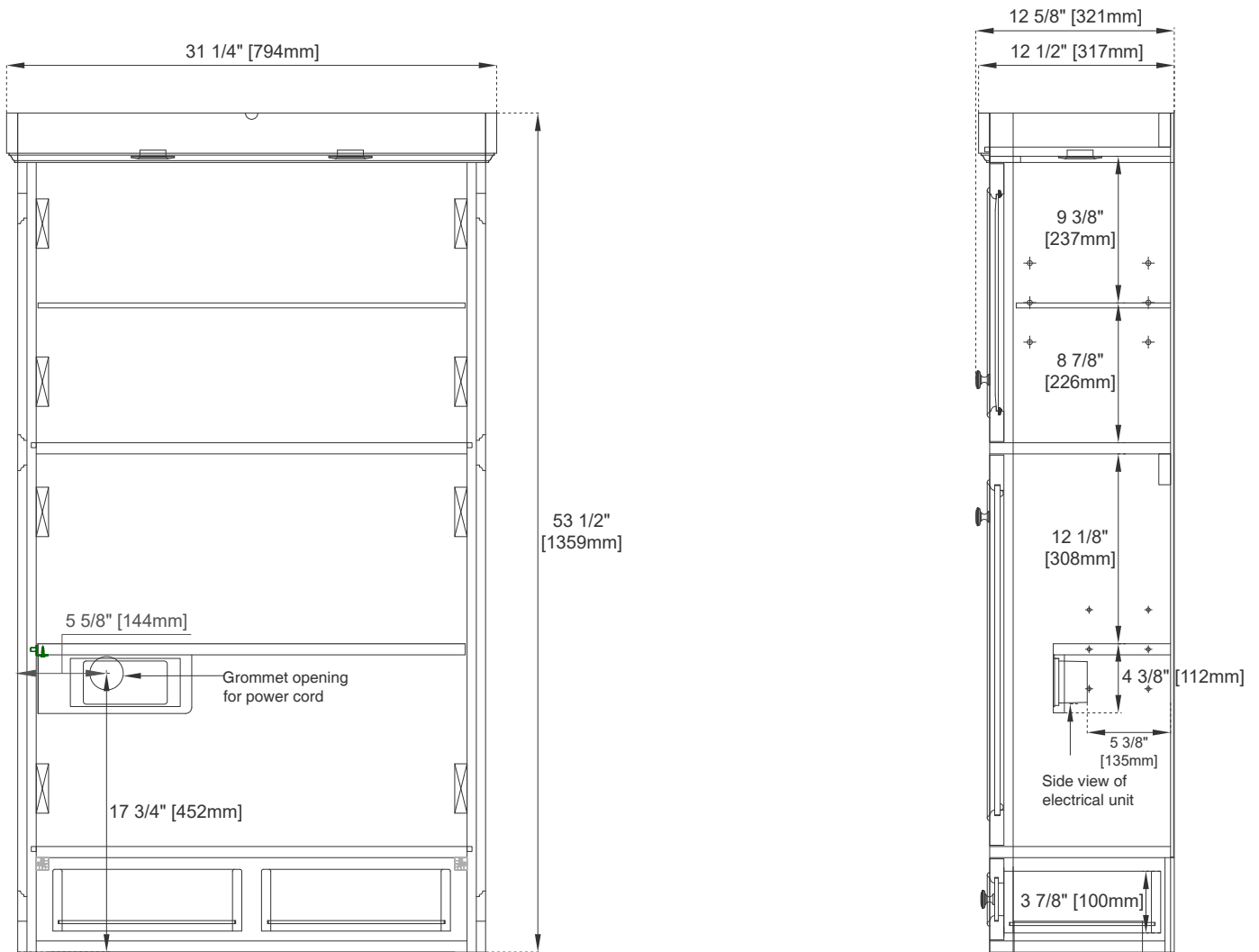
All dimensions are nominal

Visit website for warranty and installation information
www.jamesmartinvanities.com

30" DE SOTO DOUBLE TOWER HUTCH

825-H30-BW

JAMES MARTIN VANITIES



Back View

Side View

All dimensions are nominal

Visit website for warranty and installation information
www.jamesmartinvanities.com