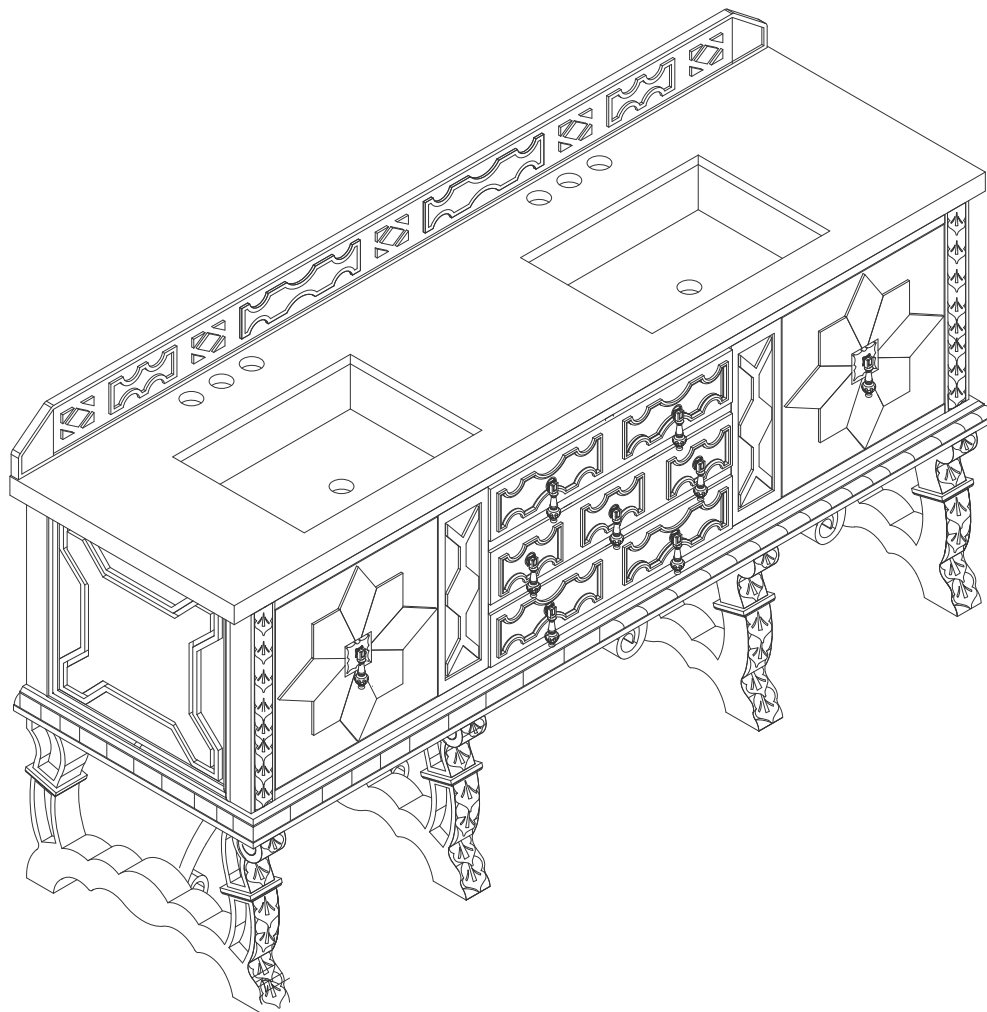


72" BALMORAL VANITY

150-V72-ANW

JAMES MARTIN
VANITIES



Features and Materials

Solids: Soft Maple and Yellow Poplar

Veneers: Red Oak

Panels: Plywood

Installation Type: Floor Standing

Legs and Cabinet: Hand-Carving Details

Number of Basins: Two, with optional 3cm top

Vanity Top Included: NO, Optional 3cm Tops Available with Sinks

Optional Wooden Backsplash

Number of Doors: Two

Number of Drawers: Three

Assembly Type: Installation of optional 3cm top

Drawer Box Material and Construction: 12mm Plywood/English Dovetail

Joinery Hardware Material and Finish: Zinc Alloy in Antique Pewter Fits

Drain Hole Size: 1 3/4"

Full Extension, Soft Close Glides

European Soft Close Hinges

Aluminum Laminate Drawer Liners

Adjustable Levelers

Dimension

Width: 71-7/8"

Depth: 23"

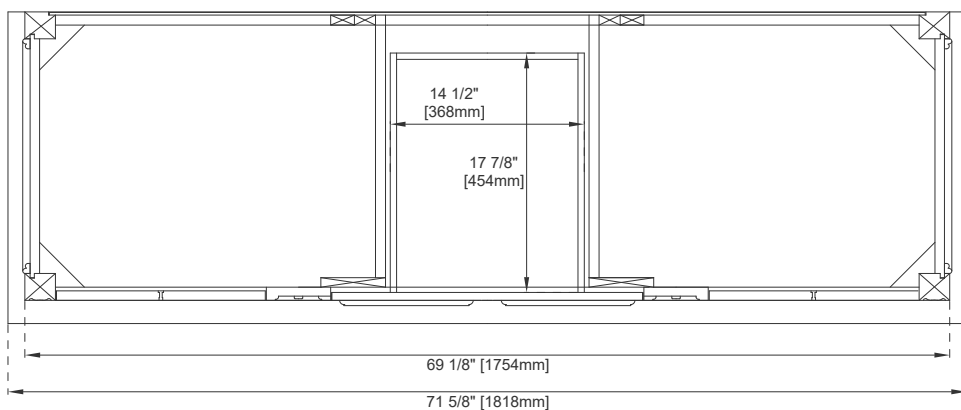
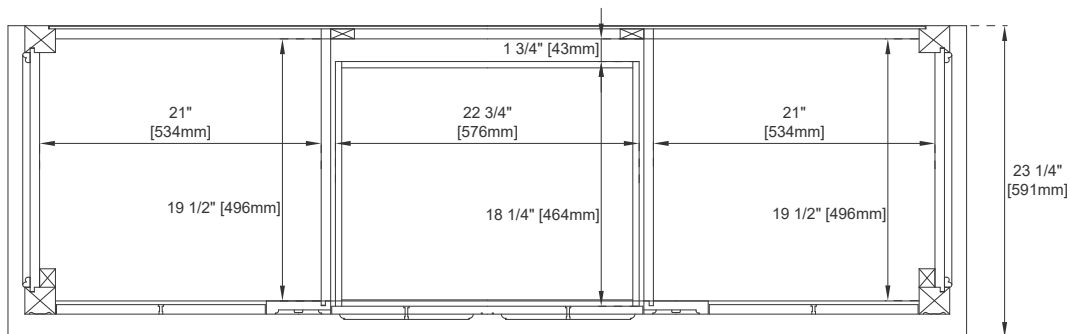
Height: 32-5/8"

Rough-In Height: 21-1/2"

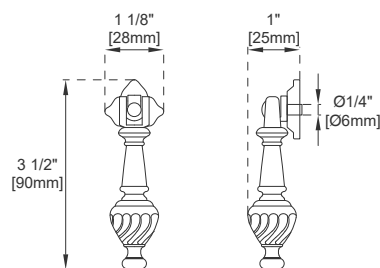
72" BALMORAL VANITY

JAMES MARTIN
VANITIES

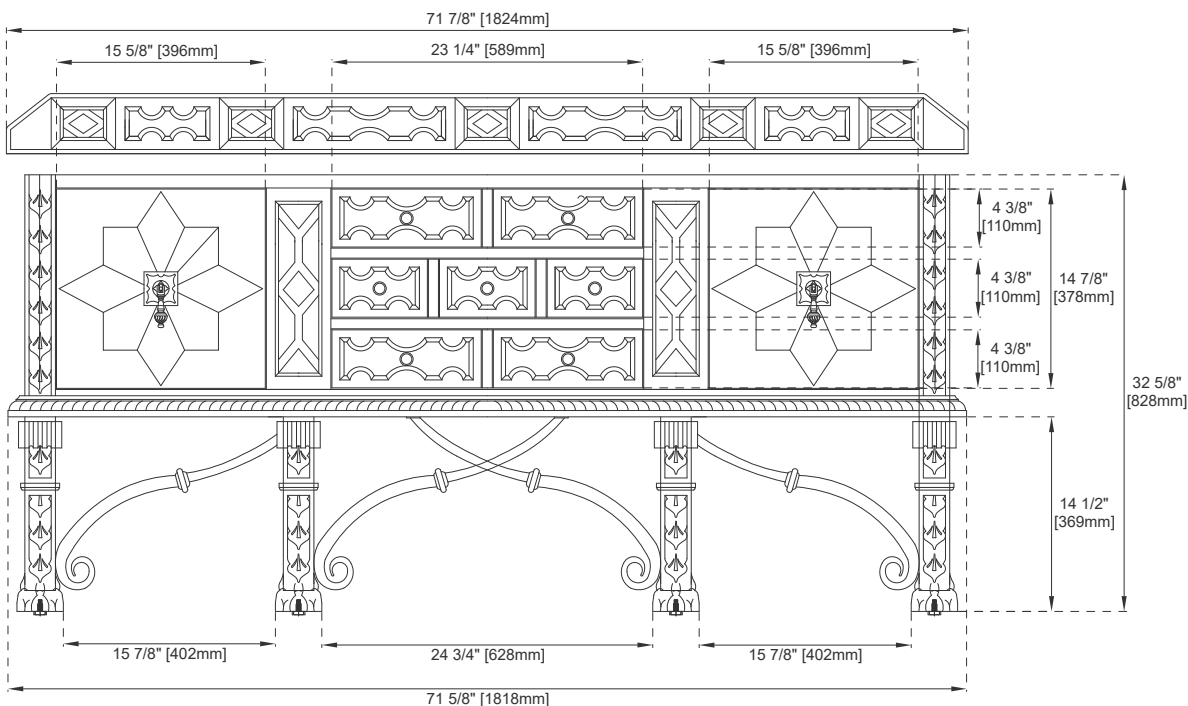
150-V72-ANW



Top View



Knob



Front View

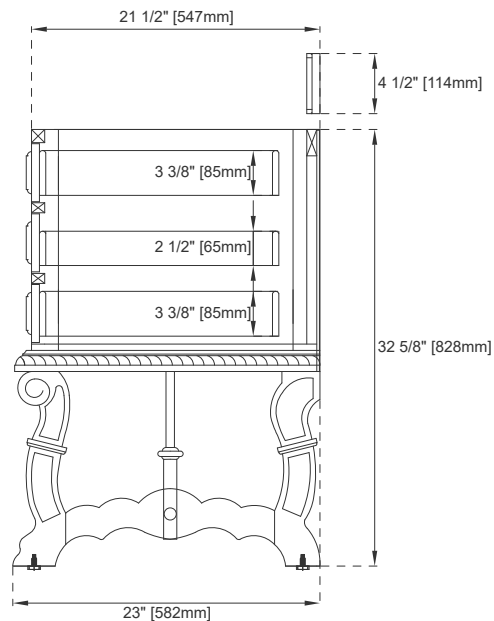
All dimensions are nominal
Diagrams are of cabinet only—James Martin Optional Countertops and sinks are not shown

Visit website for warranty and installation information
www.jamesmartinvanities.com

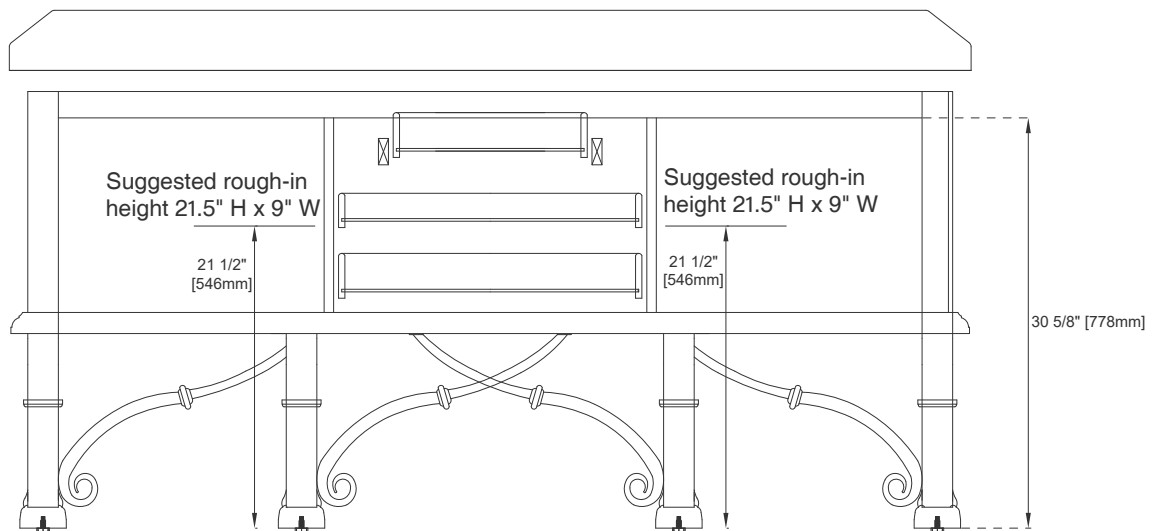
72" BALMORAL VANITY

150-V72-ANW

JAMES MARTIN
VANITIES



Side View



Back View

All dimensions are nominal
Diagrams are of cabinet only—James Martin Optional Countertops and sinks are not shown

Visit website for warranty and installation information
www.jamesmartinvanities.com