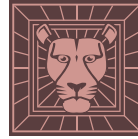


60"D

Item Number:

312-V60D-MTM

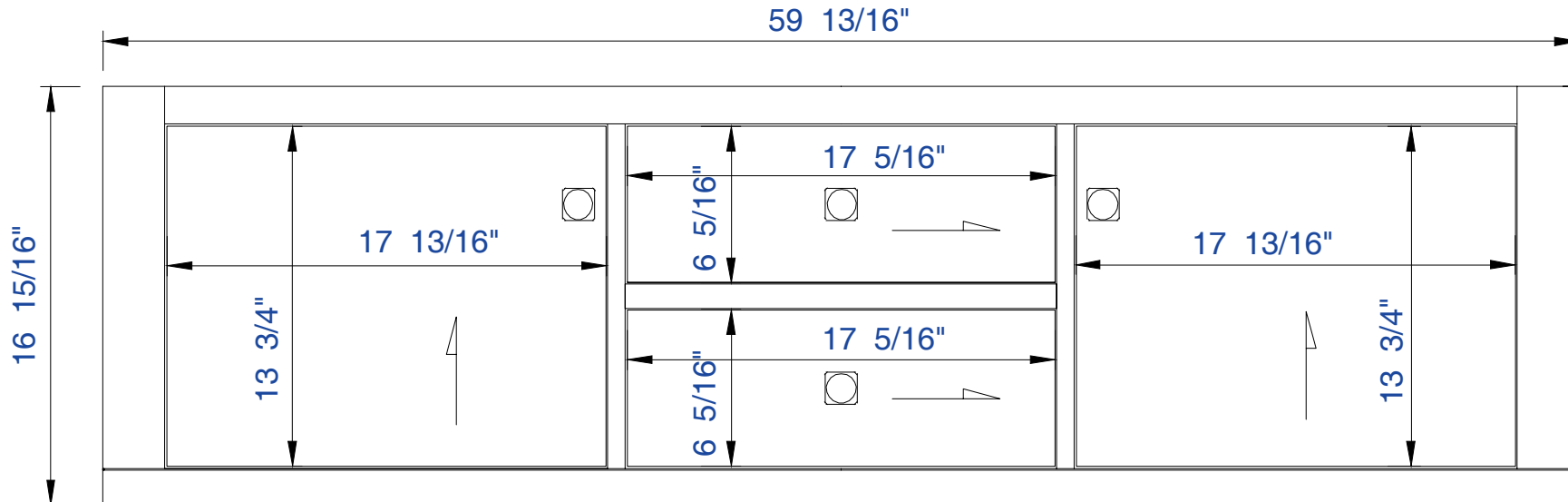
JAMES MARTIN



VANITIES™

Silverlake 60" Cabinet

Diagrams with Dimensions
page 01 of 03



NOTE ONE: Countertops are not shown in these diagrams.(Cabinet Only)

NOTE TWO: This vanity does not have a Backsplash

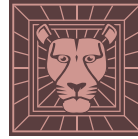
Please consult our website for Countertop Diagrams:www.jamesmartinvanities.com

60"D

Item Number:

312-V60D-MTM

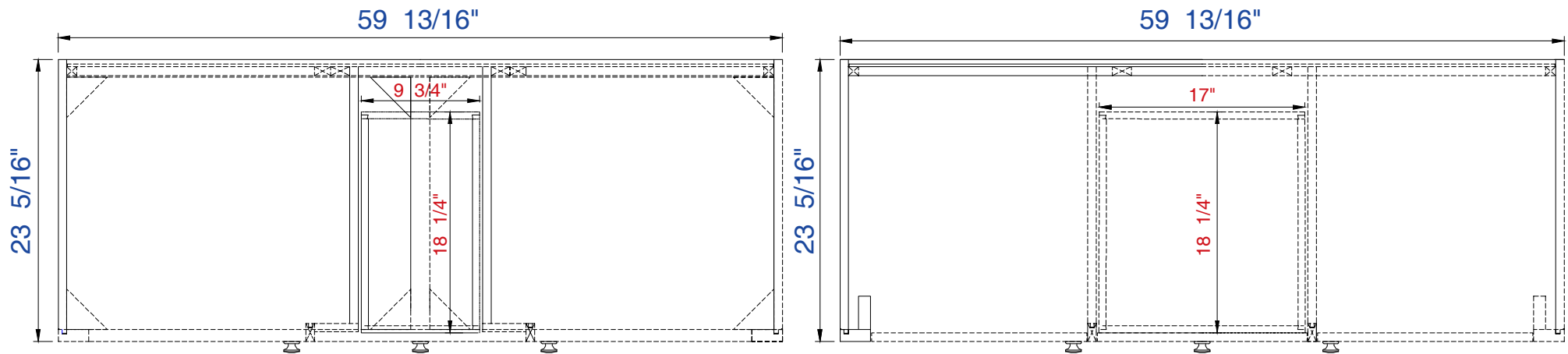
JAMES MARTIN



VANITIES™

Silverlake 60" Cabinet

Diagrams with Dimensions
page 02 of 03



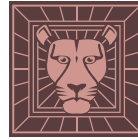
NOTE ONE: Countertops are not shown in these diagrams.(Cabinet Only)
Please consult our website for Countertop Diagrams: www.jamesmartinvanities.com

60"D

Item Number:

312-V60D-MTM

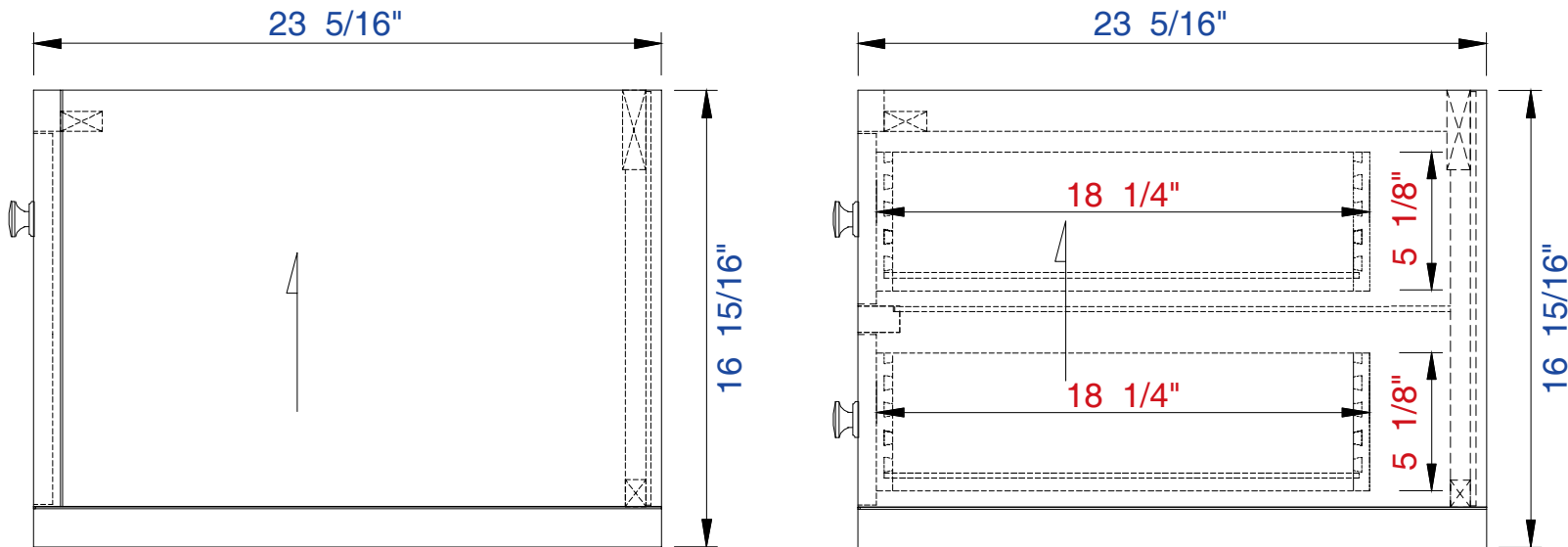
JAMES MARTIN



VANITIES™

Silverlake 60" Cabinet

Diagrams with Dimensions
page 03 of 03



NOTE ONE: Countertops are not shown in these diagrams.(Cabinet Only)

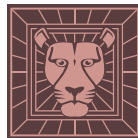
NOTE TWO: This vanity does not have a Backsplash

Please consult our website for Countertop Diagrams: www.jamesmartinvanities.com

Item Number:

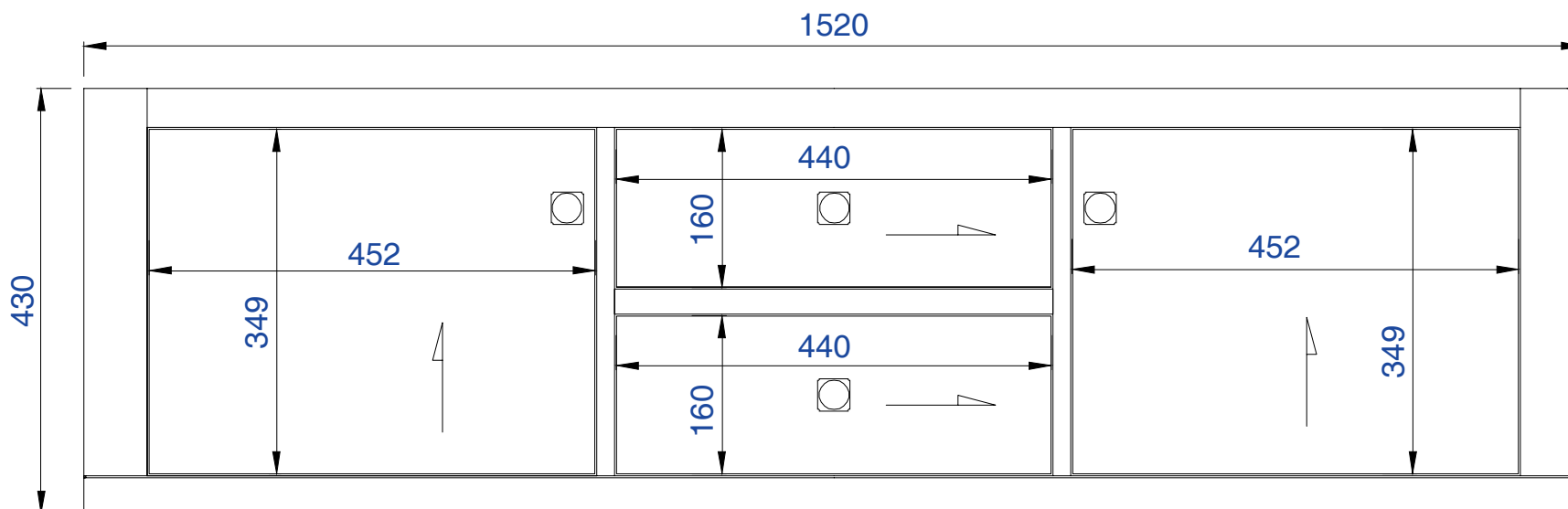
312-V60D-MTM

JAMES MARTIN



VANITIES™

Silverlake 1520mm Cabinet

Diagrams with Dimensions
page 01 of 03

NOTE ONE: Countertops are not shown in these diagrams. (Cabinet Only)

NOTE TWO: This vanity does not have a Backsplash

Please consult our website for Countertop Diagrams: www.jamesmartinvanities.com

1520mm

Item Number:

312-V60D-MTM

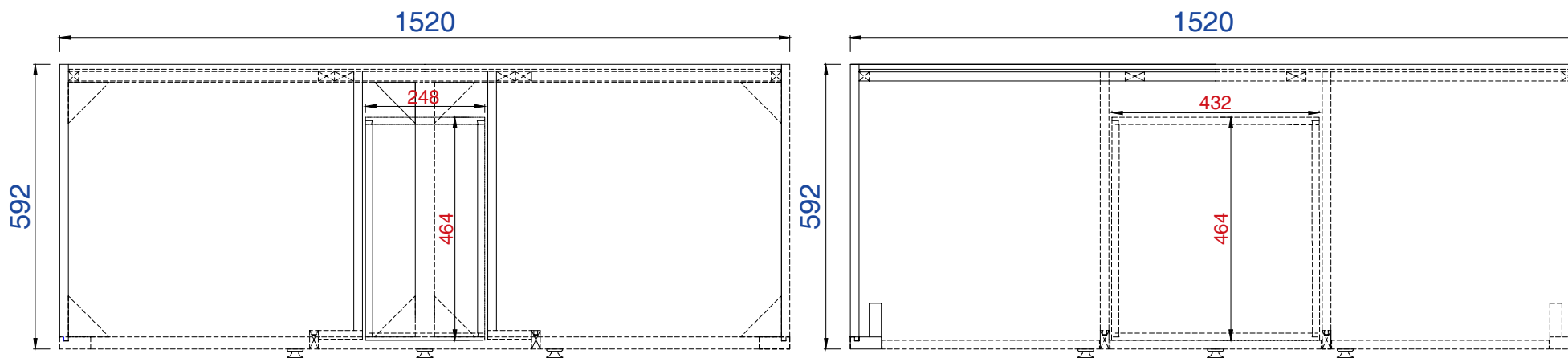
JAMES MARTIN



VANITIES™

Silverlake 1520mm Cabinet

Diagrams with Dimensions
page 02 of 03

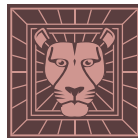


NOTE ONE: Countertops are not shown in these diagrams. (Cabinet Only)
Please consult our website for Countertop Diagrams: www.jamesmartinvanities.com

Item Number:

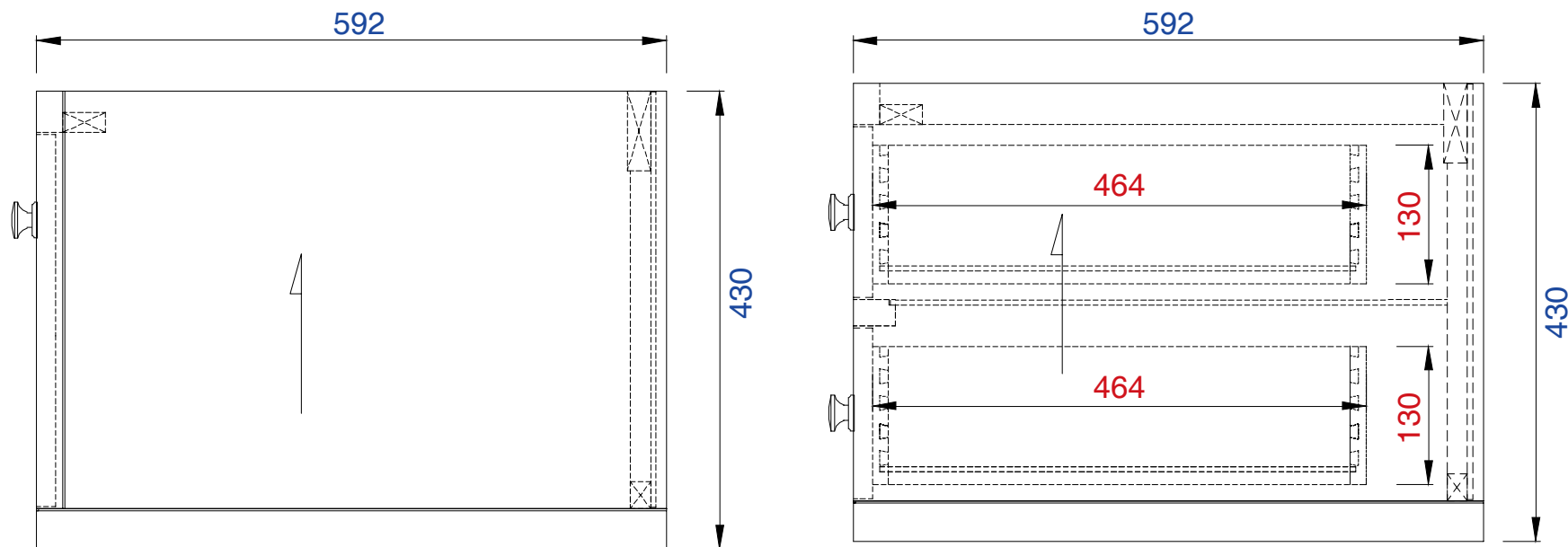
312-V60D-MTM

JAMES MARTIN



VANITIES™

Silverlake 1520mm Cabinet

Diagrams with Dimensions
page 03 of 03

NOTE ONE: Countertops are not shown in these diagrams. (Cabinet Only)

NOTE TWO: This vanity does not have a Backsplash

Please consult our website for Countertop Diagrams: www.jamesmartinvanities.com