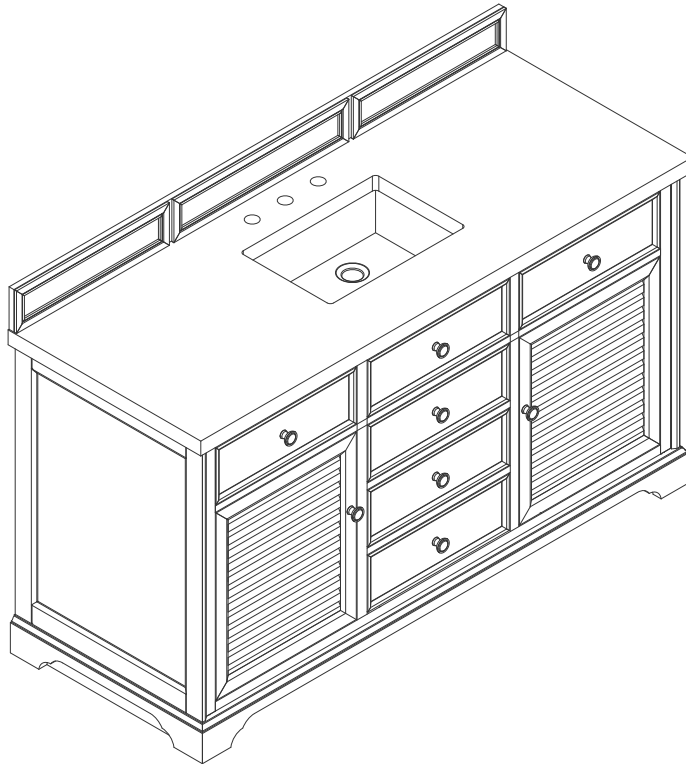


60"S SAVANNAH VANITY

JAMES MARTIN
VANITIES

238-104-5311



Features and Materials

Solids: Ash
Veneers: Red OAK
Panels: Plywood
Installation Type: Floor Standing
Number of Basins: One, with optional 3cm top
VanityTop Included: NO, Optional 3cm Tops Available with Sinks
Basins Included: NO
Overflow: Yes, Front Facing
Optional Wooden Backsplash
Number of Doors: Two
Number of Drawers: Five
Assembly Type: Installation of optional 3cm top with sink
Drawer Box Material and Construction: 12mm Plywood/English Dovetail
Joinery Hardware Material and Finish: Zinc Alloy in Antique Pewter Color
Fits Drain Hole Size: 1 3/4"
Full Extension, Soft Close Glides
European Soft Close Hinges
Aluminum Laminate Drawer Liners
Adjustable Levelers

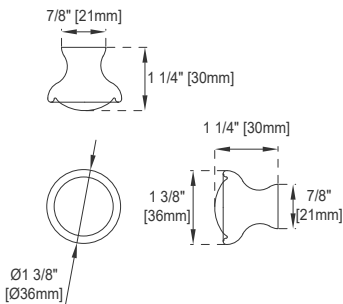
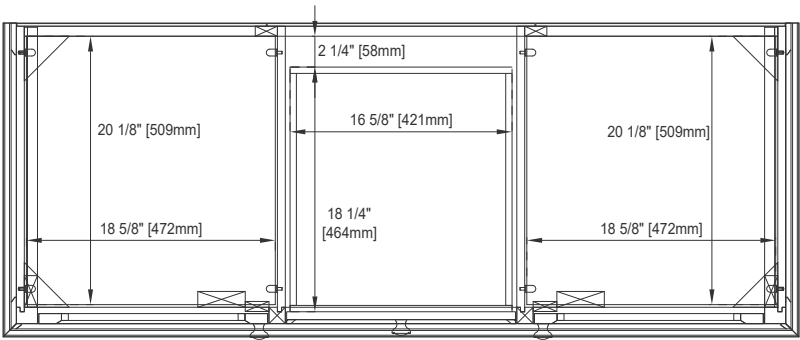
Dimension

Width: 59-1/2"
Depth: 23-1/2"
Height: 32-3/4"
Rough-In Height: 21-1/2"

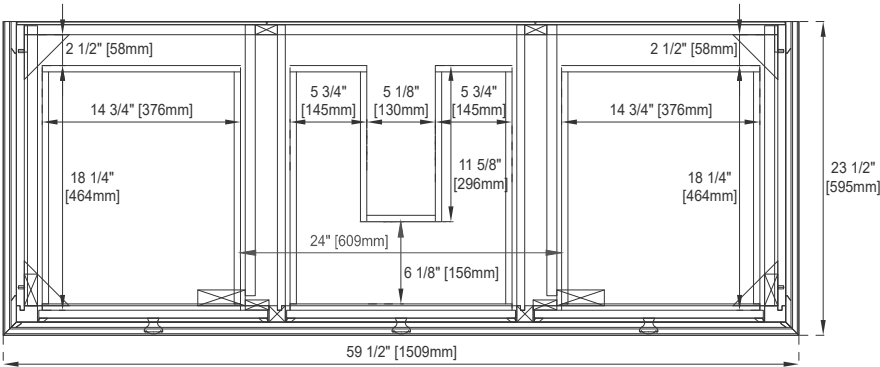
60"S SAVANNAH VANITY

JAMES MARTIN VANITIES

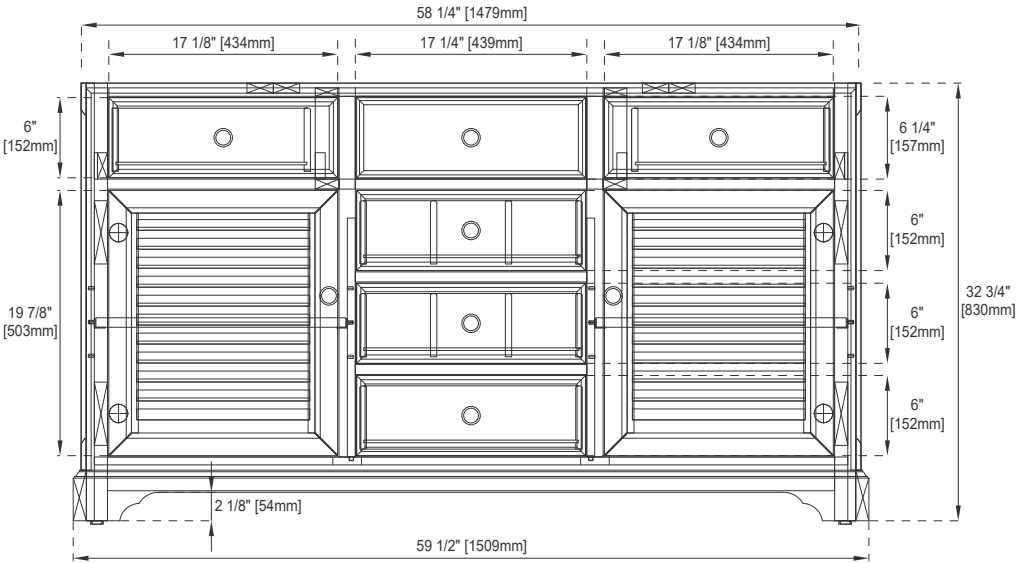
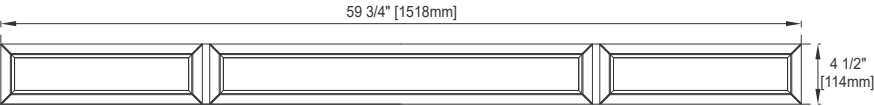
238-104-5311



Knob



Top View



Front View

All dimensions are nominal

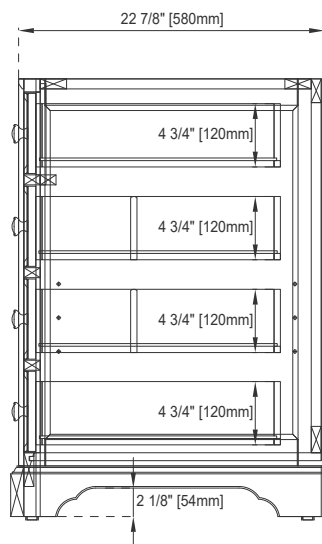
Diagrams are of cabinet only- James Martin Optional Countertops and sinks are not shown

Visit website for warranty and installation information
www.jamesmartinvanities.com

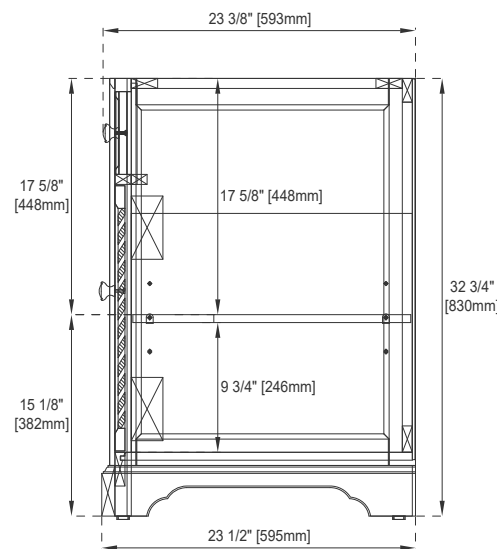
60"S SAVANNAH VANITY

238-104-5311

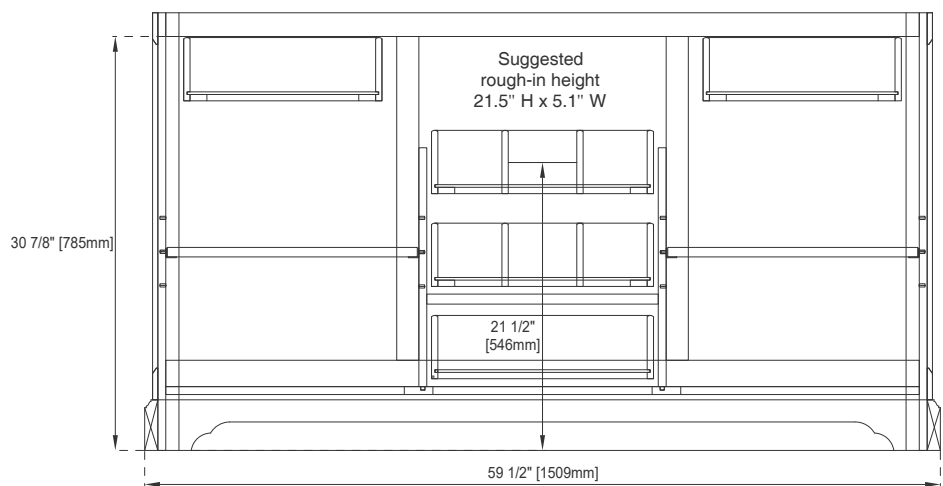
JAMES MARTIN
VANITIES



Side View 1



Side View 2



Back View

All dimensions are nominal
Diagrams are of cabinet only- James Martin Optional Countertops and sinks are not shown

Visit website for warranty and installation information
www.jamesmartinvanities.com