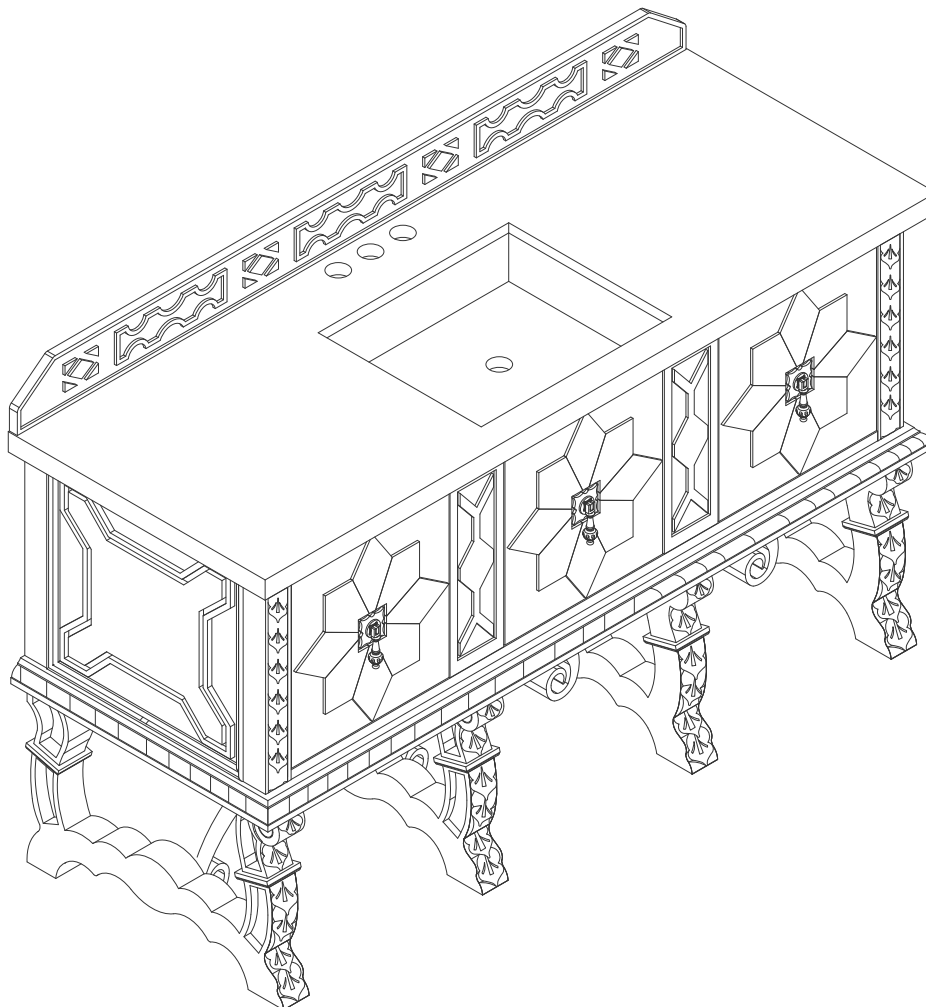


60"S BALMORAL VANITY

150-V60S-ANW

JAMES MARTIN
VANITIES



Features and Materials

Solids: Soft Maple and Yellow Poplar

Veneers: Red Oak

Panels: Plywood

Installation Type: Floor Standing

Legs and Cabinet: Hand-Carving Details

Number of Basins: One, with optional 3cm top

Vanity Top Included: NO, Optional 3cm Tops Available with Sinks

Optional Wooden Backsplash

Number of Doors: Three

Number of Drawers: 0

Assembly Type: Installation of optional 3cm top

Hardware Material and Finish: Zinc Alloy in Antique Pewter

Fits Drain Hole Size: 1 3/4"

Overflow: Front Facing

European Soft Close Hinges

Adjustable Levelers

Dimension

Width: 59-7/8"

Depth: 23"

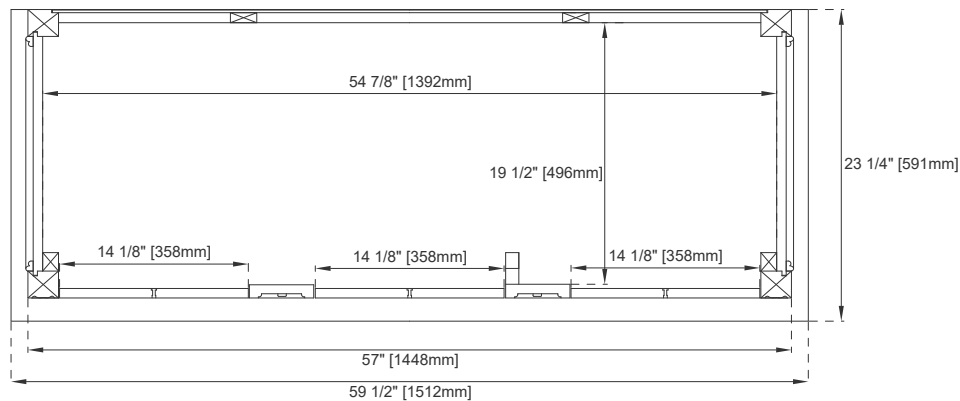
Height: 32-5/8"

Rough-In Height: 21-1/2"

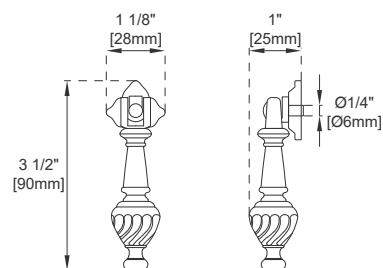
60"S BALMORAL VANITY

JAMES MARTIN
VANITIES

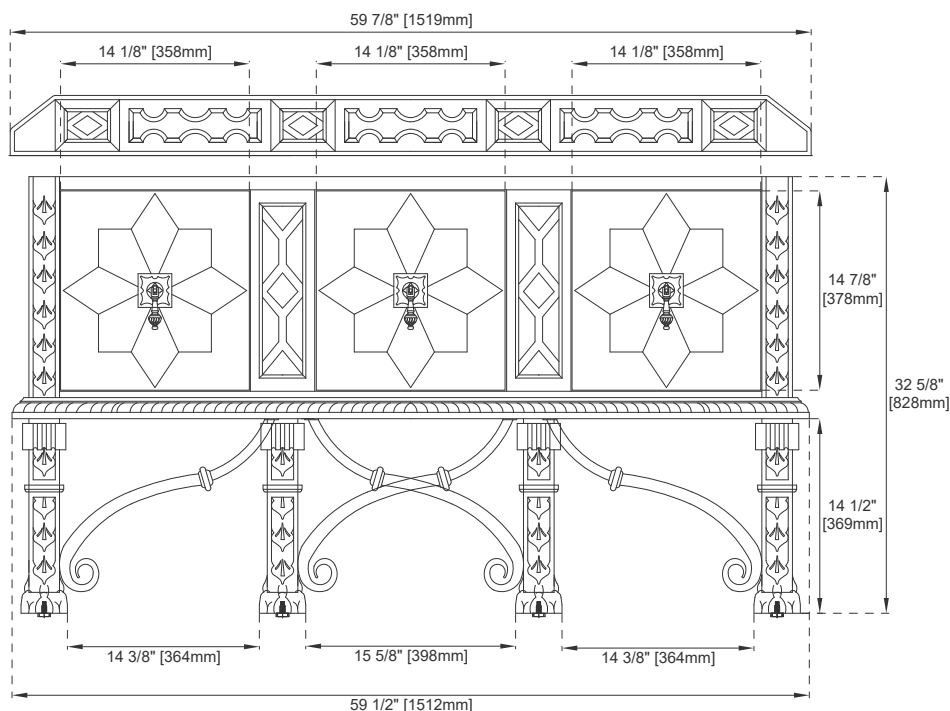
150-V60S-ANW



Top View



Knob



Front View

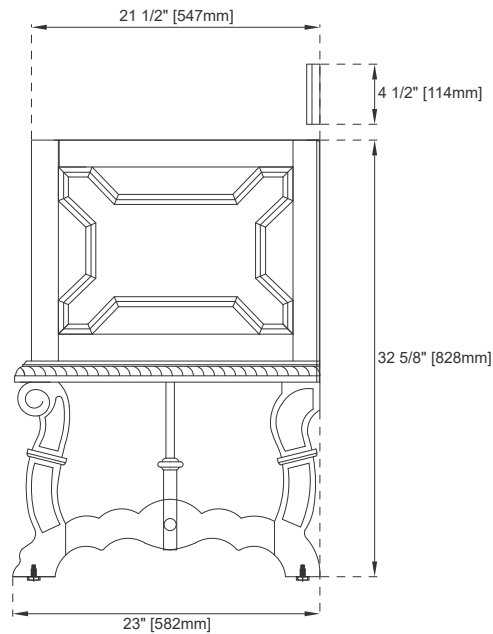
All dimensions are nominal
Diagrams are of cabinet only—James Martin Optional Countertops and sinks are not shown

Visit website for warranty and installation information
www.jamesmartinvanities.com

60"S BALMORAL VANITY

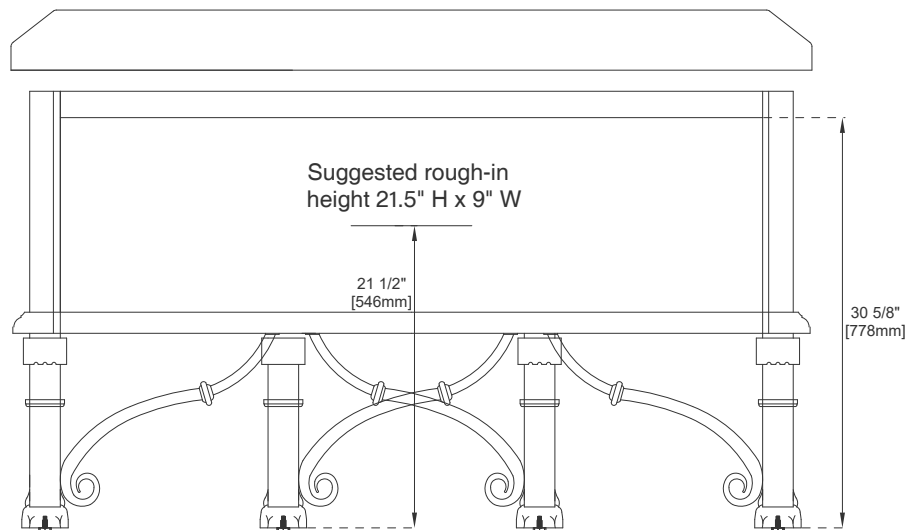
150-V60S-ANW

JAMES MARTIN
VANITIES



Side View

Side View



Back View

All dimensions are nominal
Diagrams are of cabinet only—James Martin Optional Countertops and sinks are not shown

Visit website for warranty and installation information
www.jamesmartinvanities.com