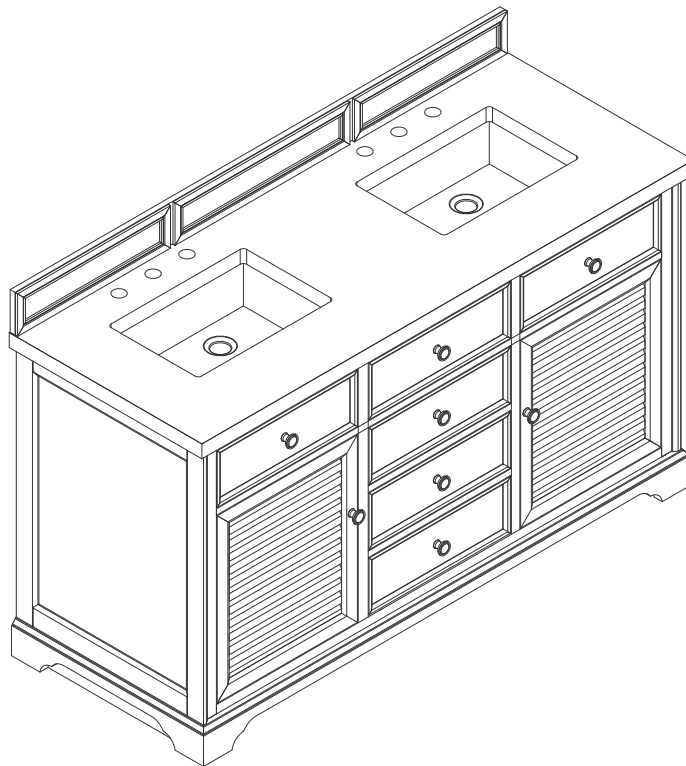


60"D SAVANNAH VANITY

JAMES MARTIN
VANITIES

238-104-5611



Features and Materials

Solids: Ash

Veneers: Red OAK

Panels: Plywood

Installation Type: Floor Standing

Number of Basins: Two, with optional 3cm top

Vanity Top Included: NO, Optional 3cm Tops Available with Sinks Basins

Included: NO

Overflow: Yes, Front Facing

Optional Wooden Backsplash

Number of Doors: Two

Number of Drawers: Two

Assembly Type: Installation of optional 3cm top with sink

Drawer Box Material and Construction: 12mm Plywood/English Dovetail Joinery

Hardware Material and Finish: Zinc Alloy in Antique Pewter

Fits Drain Hole Size: 1 3/4"

Full Extension, Soft Close Glides

European Soft Close Hinges

Aluminum Laminate Drawer Liners

Adjustable Levelers

Dimension

Width: 59-1/2"

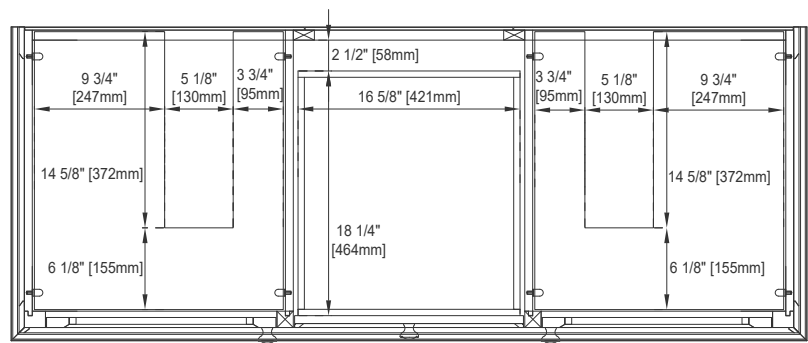
Depth: 23-1/2"

Height: 32-3/4"

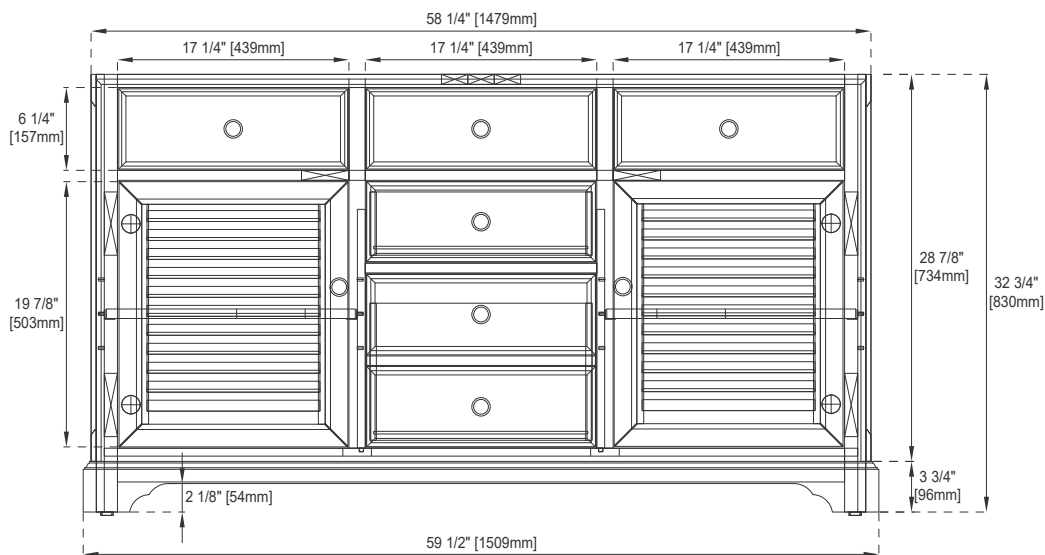
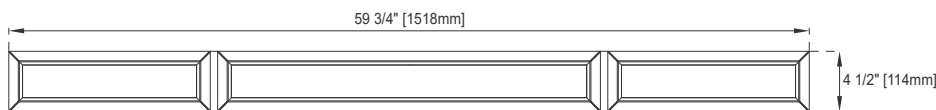
Rough-In Height: 21-1/2"

60"D SAVANNAH VANITY

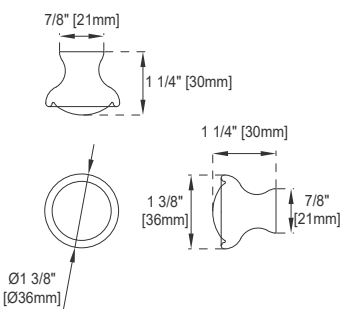
238-104-5611



Top View



Front View



Knob

All dimensions are nominal

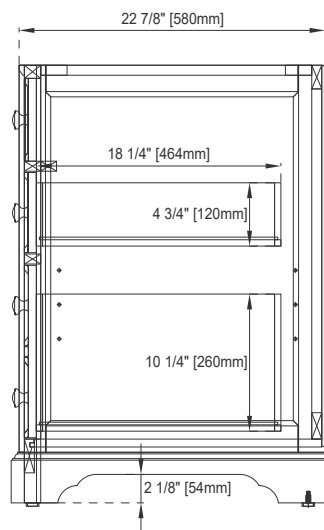
Diagrams are of cabinet only- James Martin Optional Countertops and sinks are not shown

Visit website for warranty and installation information
www.jamesmartinvanities.com

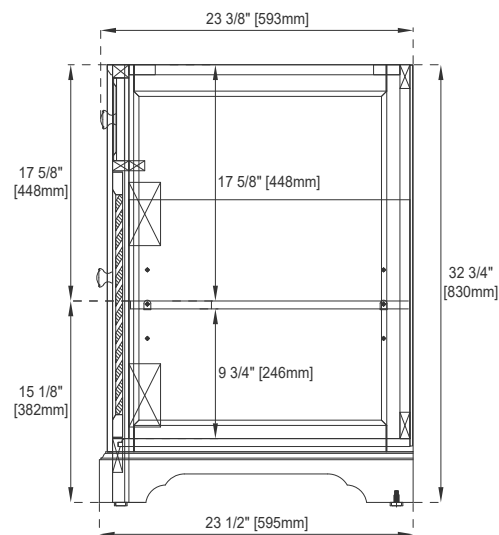
60"D SAVANNAH VANITY

JAMES MARTIN
VANITIES

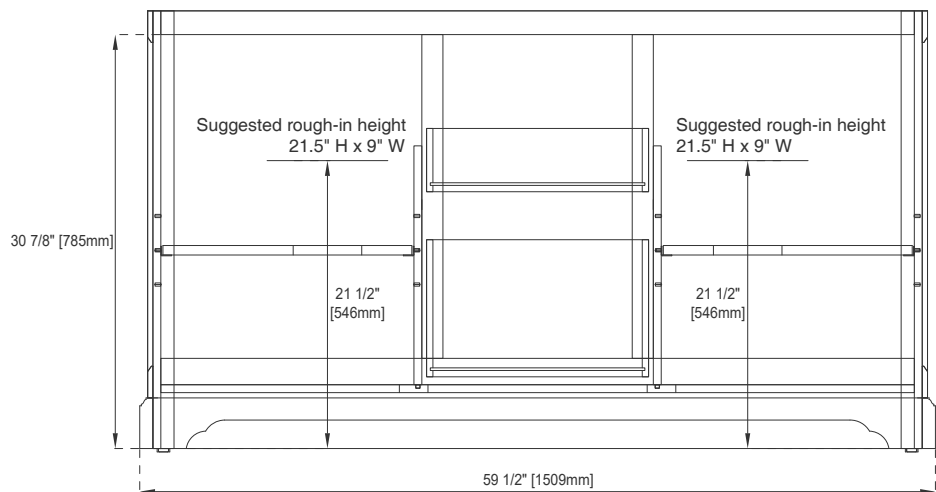
238-104-5611



Side View 1



Side View 2



Back View

All dimensions are nominal
Diagrams are of cabinet only- James Martin Optional Countertops and sinks are not shown

Visit website for warranty and installation information
www.jamesmartinvanities.com