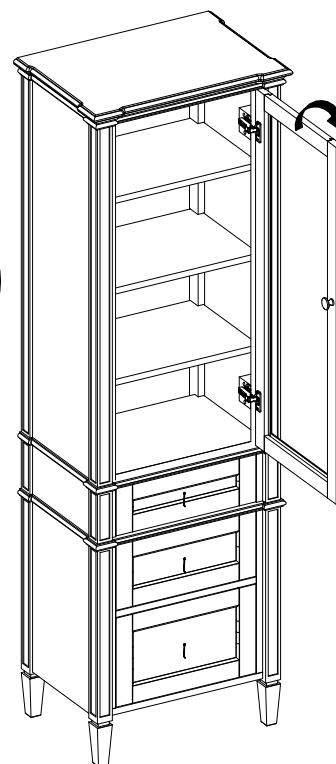
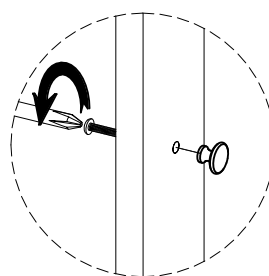
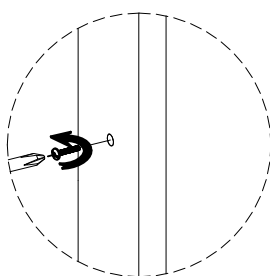
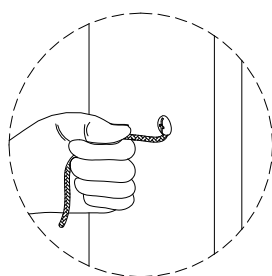


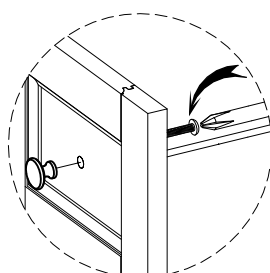
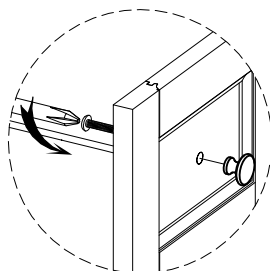
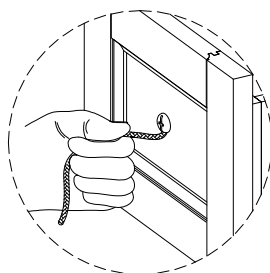
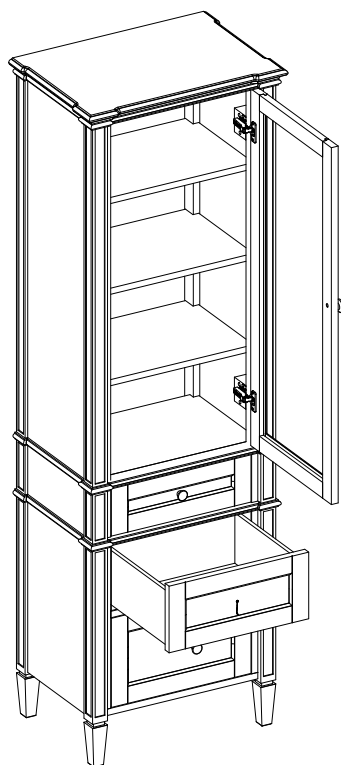
Brittany Linen Cabinet:655-LC-BW Assembly/Installation Instructions

Step 1:

One of the door handles is attached to the inside of the door. Use the attached string to open the door initially. Unscrew the door handle and attach it to the door, as illustrated in the diagram.

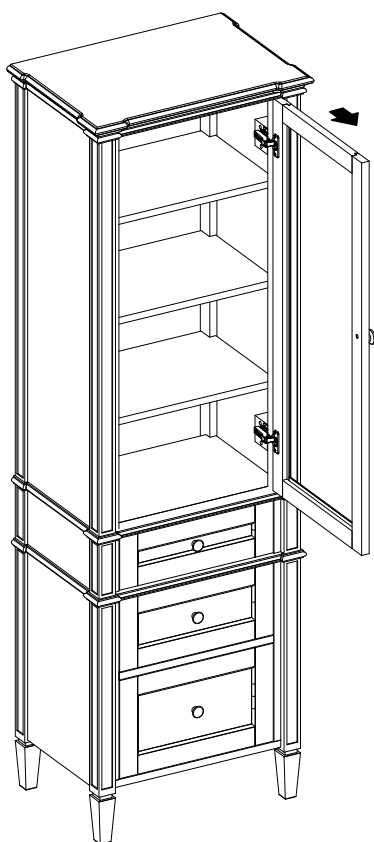
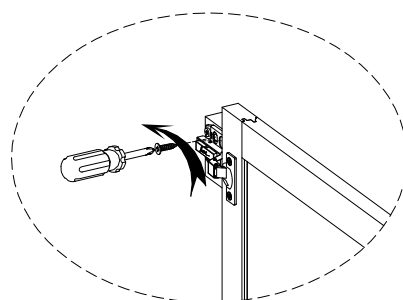
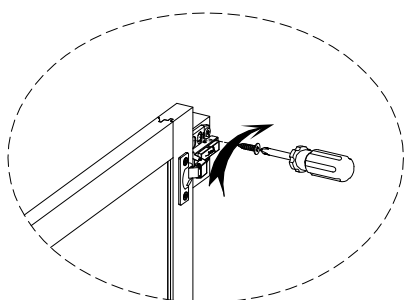


Step 2: Repeat the same step for the drawer



Brittany Linen Cabinet:655-LC-BW
Assembly/Installation Instructions

Step 3:As shown in Illustration 3, the cabinet door is reversible, and can be hinged on the left side or the right side. To switch, simply unscrew the 4 screws on the base of the hinges, flip the door to the other side of the cabinet, and reattach the hinges to the pre-drilled holes on the side panel.



OR

