


Soho Mixer One-Way

by JEE-O


WATRLINE

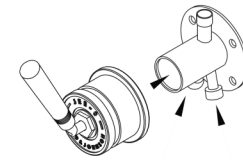


 ADA compliant

 RAW (brushed)
700-2100

 hammercoat black
700-2102

 custom finish
700-210C



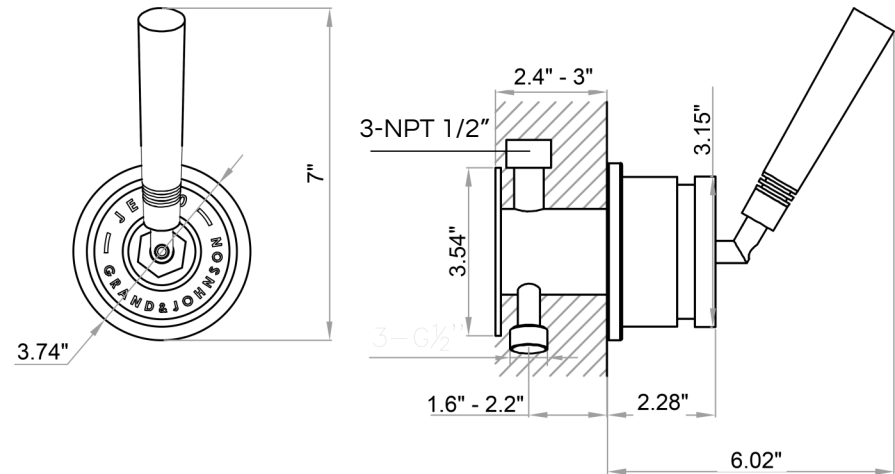
inlet hot inlet cold

SPECIFICATIONS

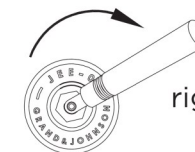
MATERIAL:	304 stainless steel
FEATURES:	pressure balance valve
CARTRIDGE:	progressive mixing mechanism (#005-0104)
WEIGHT:	6 lbs
PACKAGE DIMENSIONS:	L 12" x W 8" x H 6"
DELIVERY WEIGHT:	7 lbs
WARRANTY:	2-year limited warranty

MAINTENANCE & CARE

RAW (BRUSHED):	Regularly apply stainless steel cleaner and rub in the direction of the grain, using a slightly abrasive sponge.
HAMMERCOCOAT BLACK:	Regularly clean with soap water or alcohol. Do not use abrasives.



middle off



right water spout