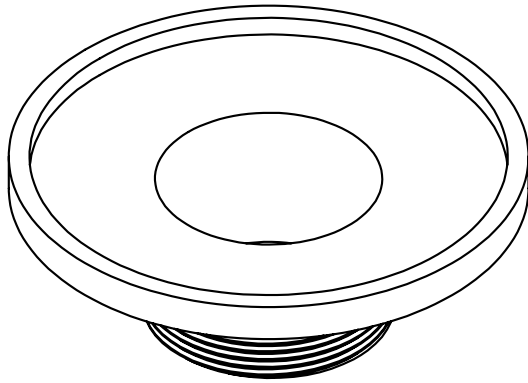


R 52 Specifications



R 52:

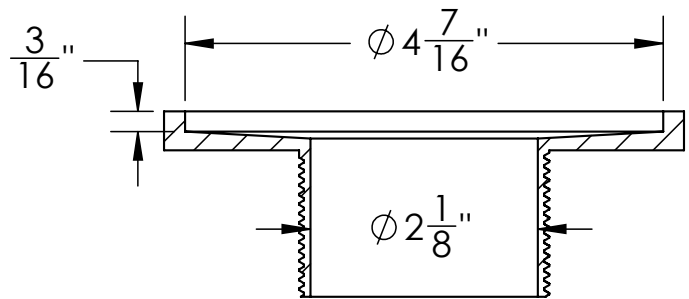
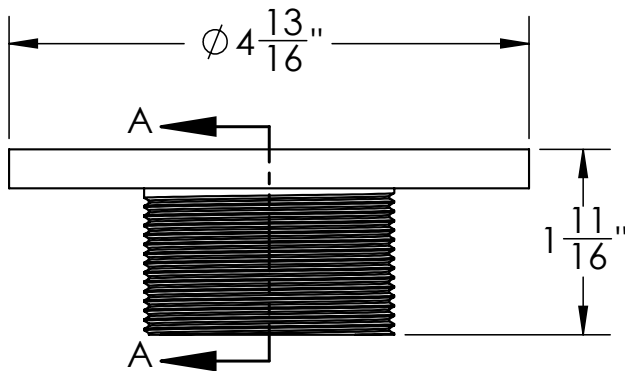
- 5" round throat with 2" outlet
- Pitched towards outlet
- 304L Stainless Steel

Kits:

- RKD 5, RQD 5, RMS 5, RVS 5, RNS 5, RWS 5 (standard flow models)

Finishes:

- Satin Stainless
- Polished Stainless
- Oil Rubbed Bronze
- Satin Bronze
- Matte Black



SECTION A-A

Infinity Drain
145 Dixon Avenue
Amityville, NY 11701
Phone: 516.767.6786
Fax: 516.740.3066
www.infinitydrain.com



NOTE: Installer must verify all rough-in dimensions prior to installation and consult local and national codes. Conformity and compliance to local and national codes are the responsibility of the installer.