

MALIBU 30

V-6230 Cabinet

FINISHES



**Matte
White .11**



**Ocean
Grey .03**



**Weathered
Oak .207**



**Brushed Grey
Oak .209**

PRODUCT FEATURES

- Furniture-style, solid hardwood construction (zero MDF, particle board or chipboard)
- Soft-close door hinges and drawer rails
- Dovetail drawer joinery
- Includes 1 drawer and 1 cabinet space
- Satin Nickel hardware included

RECOMMENDED TOP

- **Model # ST-5130**
 - Available in Carrara Marble (.401) and Glacier White Quartz (.421)
 - Faucet holes on 8" centers, single-basin
 - Includes matching back splash
 - Compatible with L-2410, L-2432, L-2542 and L-2425 sinks

NOTES

- 1 year limited warranty on cabinet and top
- Each piece (cabinet, top, sink) sold separately
- Faucetry / drain parts not included

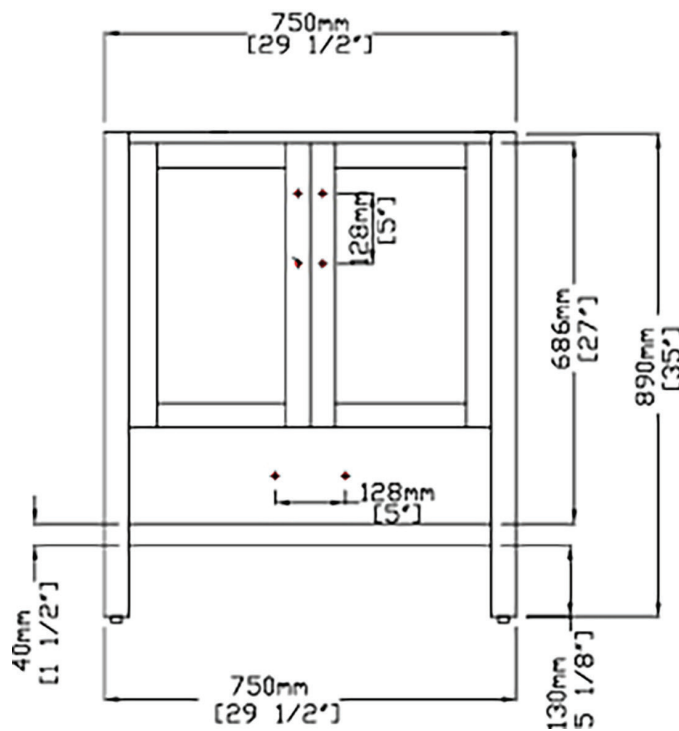


SPECIFICATIONS

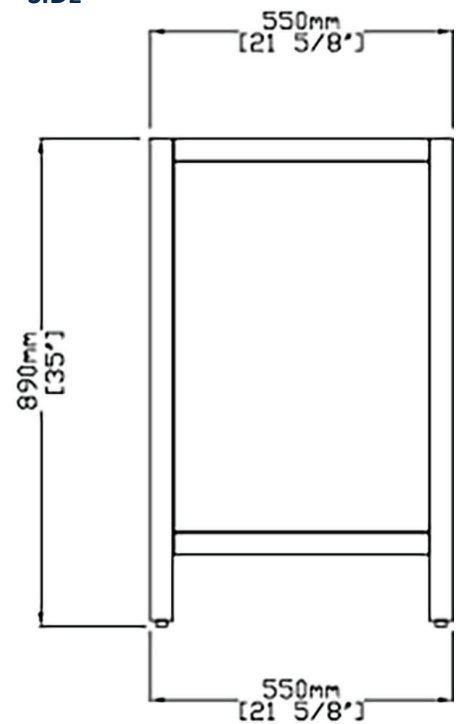
TOP



FRONT



SIDE



Wood is a beautiful natural material. The figuring (grain) of each piece is unique to every vanity produced. Every vanity will contain a different figure, birdseye knots and heartwood streaks. These are not considered defects, but natural unique character. There will also be a natural aging of every wood species over time which changes the overall color of the vanity. In most instances, this will be a darkening of dark woods and a yellowing of light woods. Direct sunlight will hasten this effect. Given this natural beauty, no two vanities will exactly match in figure or color (if stained or clear-coated). Samples may differ.

Stone products will have naturally occurring characteristics such as variation in grain, color, and mineral streaks. Due to this natural beauty, new and/or replacement pieces may not match display samples and/or existing pieces.