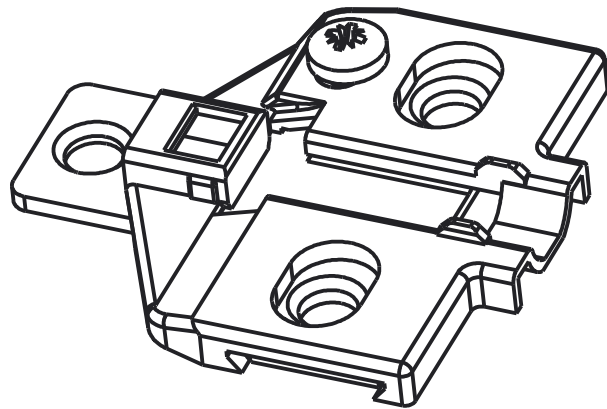
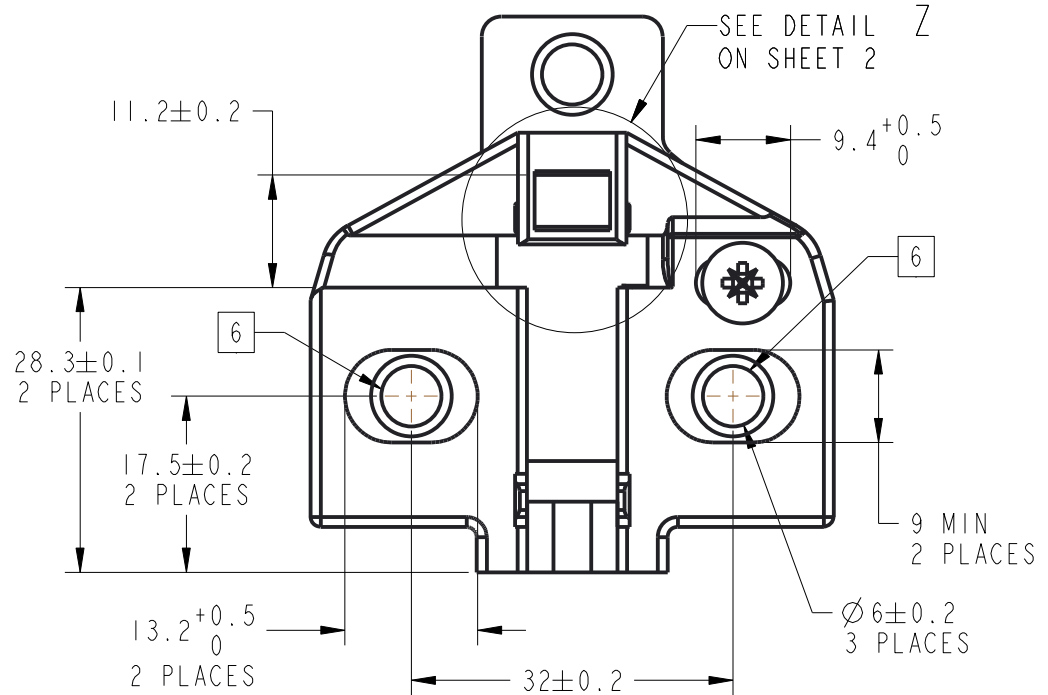


THE INFORMATION CONTAINED IN THIS DRAWING IS THE SOLE PROPERTY OF
 HARDWARE RESOURCES INC. ANY REPRODUCTION IN PART OR AS A WHOLE
 WITHOUT THE WRITTEN PERMISSION OF HARDWARE RESOURCES INC. IS PROHIBITED.

REVISIONS			
REV	DESCRIPTION	DATE	APPROVED
A	INITIAL RELEASE	02 MAR 2015	McGREGOR

- NOTES:**
1. DRAWN IN ACCORDANCE WITH ASME Y14.5M
 2. REMOVE ALL BURRS AND SHARP EDGES
 3. ALL FILLETS AND ROUNDS R 0.05 UNLESS OTHERWISE SPECIFIED
 4. MEASURE PART UNASSEMBLED
 5. SCREW END SHALL NOT PROTRUDE BEYOND BOTTOM SURFACE
 6. 600.OP30.05 ONLY, SCREWS SHALL BE INSTALLED TO DEPTH SHOWN AT INDICATED LOCATIONS
 7. $\varnothing 6.3 \times 14$ EURO SCREW, WITH LENGTH NOT TO EXCEED 16mm

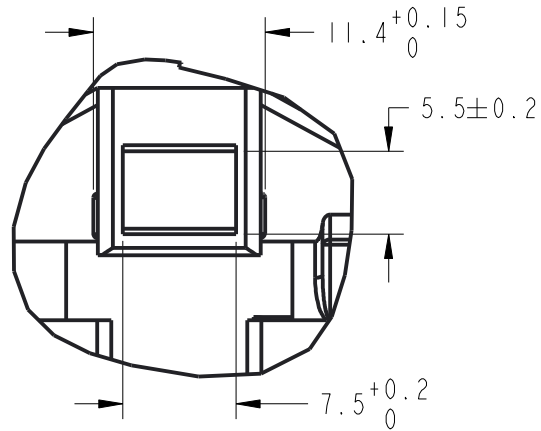
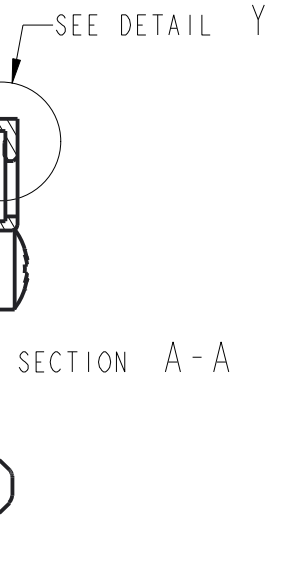
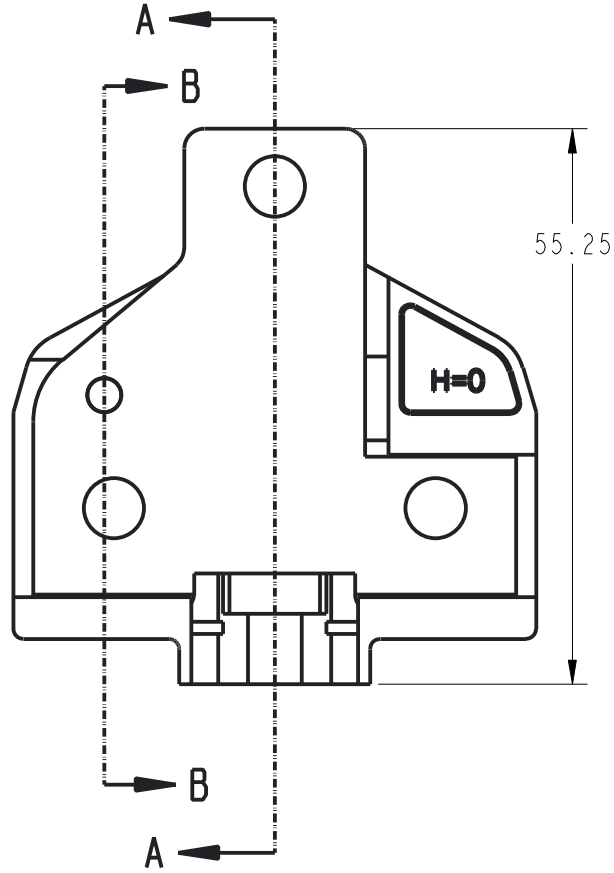
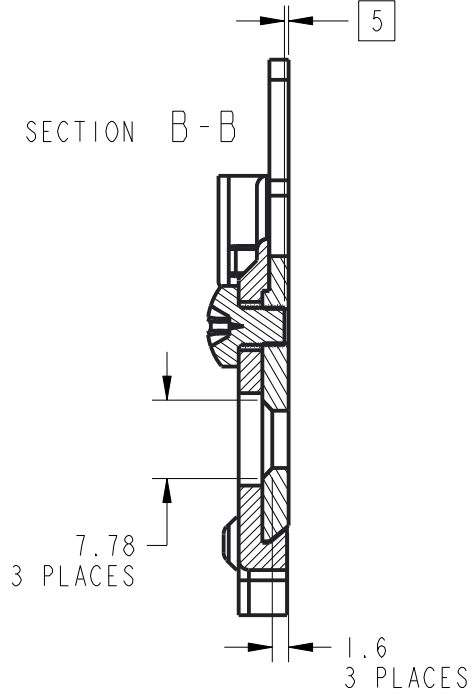


PART NUMBER	CONFIGURATION
600.0R30.05	WITHOUT MOUNTING SCREWS
600.0P30.05	WITH EURO SCREWS INSTALLED 6 7

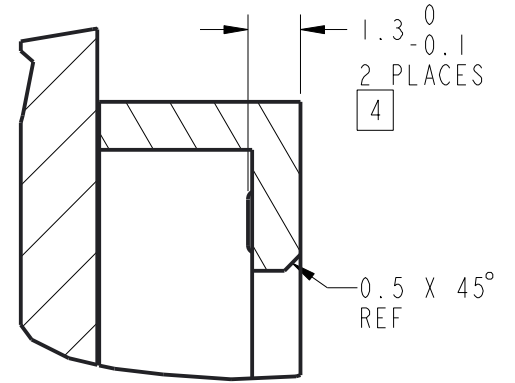
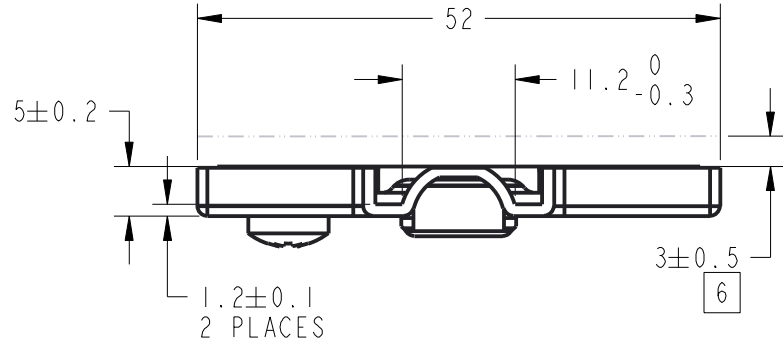
UNLESS OTHERWISE SPECIFIED DIMENSIONS ARE IN MILLIMETERS (MM)	THIRD ANGLE PROJECTION			hardware resources	
	GENERAL TOLERANCES	MATERIAL		FINISH	TITLE
0.00 - 14.99 ± 0.10	ZINC	NI	600 SERIES PLATE, 0mm		
16.00 - 39.99 ± 0.20	DRAWN BY		DATE	DRAWING NUMBER	
40.00 - 74.99 ± 0.30	RACHEL COOPER		02-06-15	600.0_30.05	
75.00 - 99.99 ± 0.45	DESIGNED BY		DATE	REV	
100.00 - 199.99 ± 0.70	RACHEL COOPER		02-06-15	A	
200.00 - 299.99 ± 1.00	APPROVED BY		DATE	SIZE	RELEASE LEVEL
300.00 - ± 1.10	D. McGREGOR		03-02-15	A3	RELEASED
ANGLE ± 1.0°				SCALE	SHEET
				2	1 OF 2

THE INFORMATION CONTAINED IN THIS DRAWING IS THE SOLE PROPERTY OF
 HARDWARE RESOURCES INC. ANY REPRODUCTION IN PART OR AS A WHOLE
 WITHOUT THE WRITTEN PERMISSION OF HARDWARE RESOURCES INC. IS PROHIBITED.

SECTION B-B



DETAIL Z
 SCALE 3:1



DETAIL Y
 SCALE 8:1

DRAWING NUMBER		600.0_30.05	REV	A
SIZE	RELEASE LEVEL	RELEASED		
A3	SCALE 2	SHEET 2 OF 2		