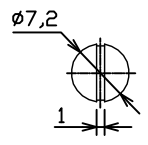
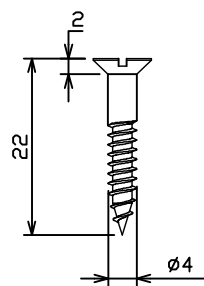
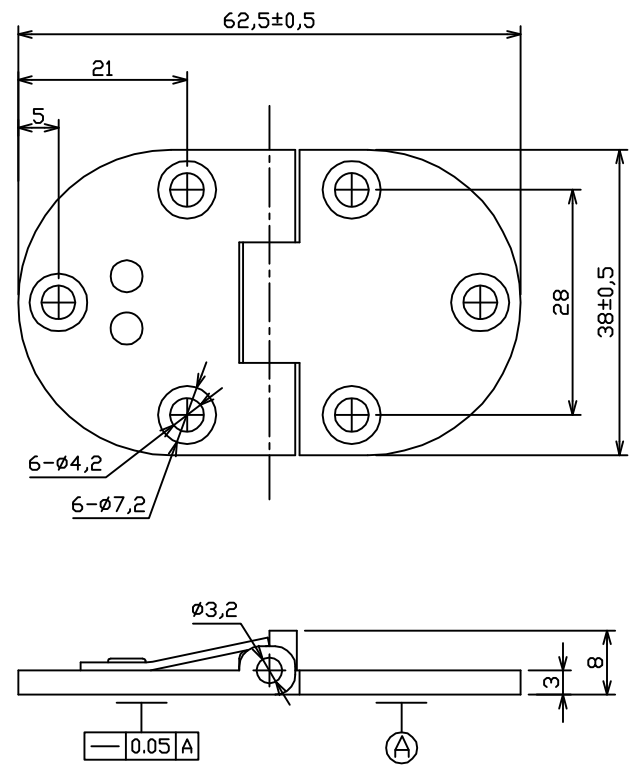
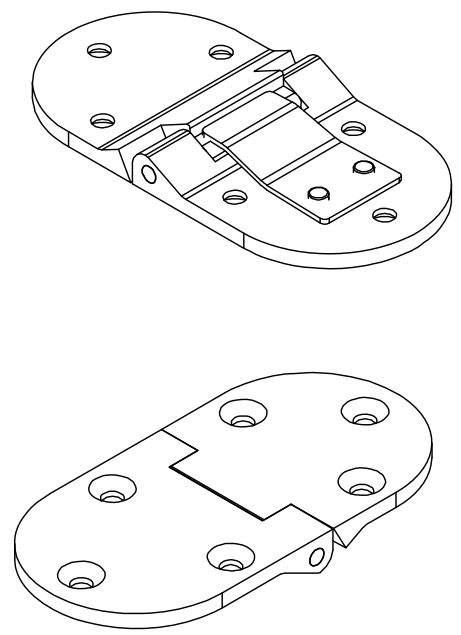


THE INFORMATION CONTAINED IN THIS DRAWING IS THE SOLE PROPERTY OF HARDWARE RESOURCES INC. ANY REPRODUCTION IN PART OR AS A WHOLE WITHOUT THE WRITTEN PERMISSION OF HARDWARE RESOURCES INC. IS PROHIBITED.

R E V I S I O N S				
ECO	REV	DESCRIPTION	DATE	APPROVED



BRASS SCREWS



UNLESS OTHERWISE SPECIFIED DIM ARE IN MILLIMETERS (mm)	
GENERAL TOLERANCES	
0.00 - 14.99	±0.10
15.00 - 39.99	±0.20
40.00 - 74.99	±0.30
75.00 - 99.99	±0.45
100.00 - 199.99	±0.70
200.00 - 299.99	±1.00
300.00 -	±1.10
ANGLE	±1.0°

THIRD ANGLE PROJECTION	
MATERIAL	FINISH
BRASS	POLISHING
DRAWN BY	DATE
PETER WEN	20150901
DESIGNED BY	DATE
APPROVED BY	DATE

**hardware resources**

TITLE

**BUTLER TRAY HINGE**

DRAWING NUMBER: BTH-12

REV: proi\_re vision

SIZE: A3 | RELEASE LEVEL: | SHEET: 1 OF 1