

Metal Drawer Box

Installation Instructions for the MDB500-089-xxx

IMPORTANT:

Before you begin, make sure you familiarize yourself with all the parts and fully read the instructions.

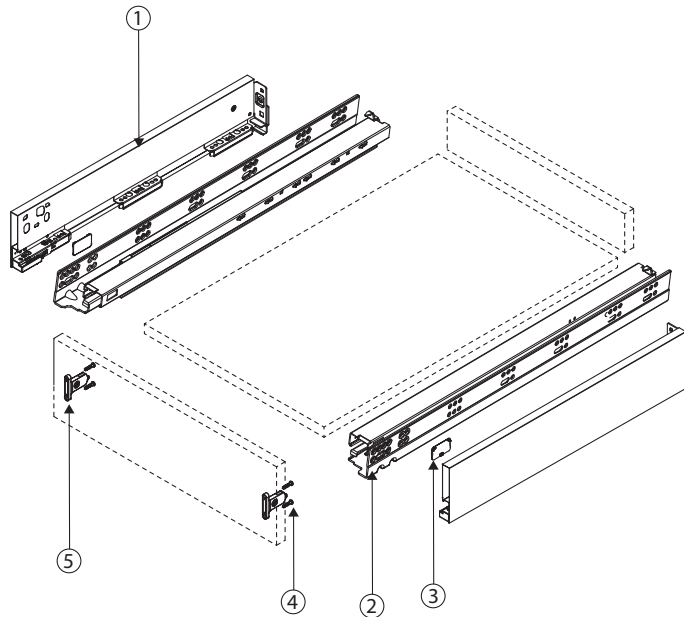
CUSTOMER SERVICE:

Toll-free customer help line available weekdays between 7:00am and 6:00pm Central Time at 800-463-0660.

TOOLS NECESSARY:

Screw gun or Phillips screwdriver and tape measure. NOTE: If screw gun has a clutch, set to lowest setting so as not to over tighten and/or strip screws.

PARTS IDENTIFICATION:

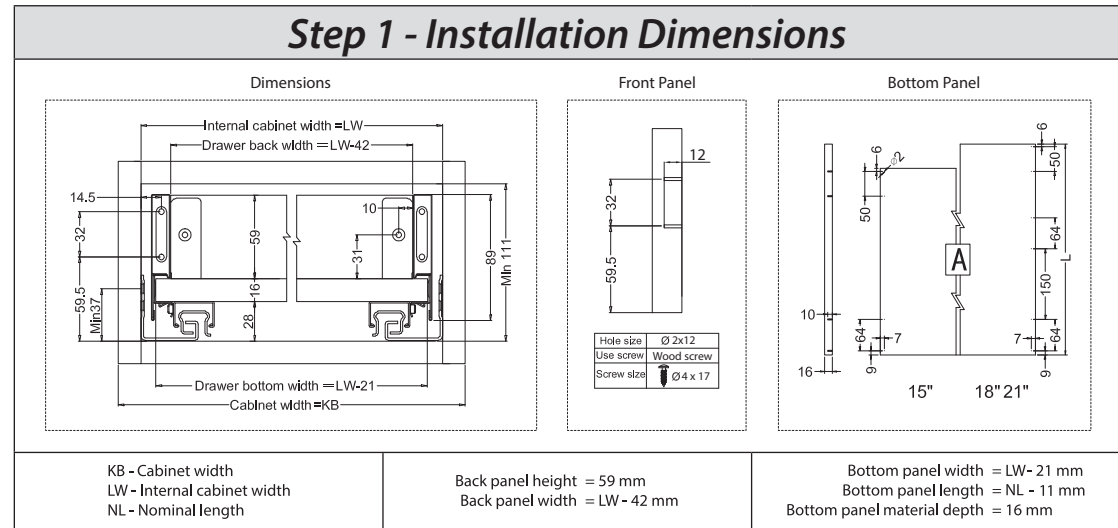


1	Drawer profiles: (L/R)	2X
2	Cabinet profiles: (L/R)	2X
3	Side cover plate	2X
4	Front fixing-bracket screws (4 x 17)	4X
5	Front fixing-bracket	2X

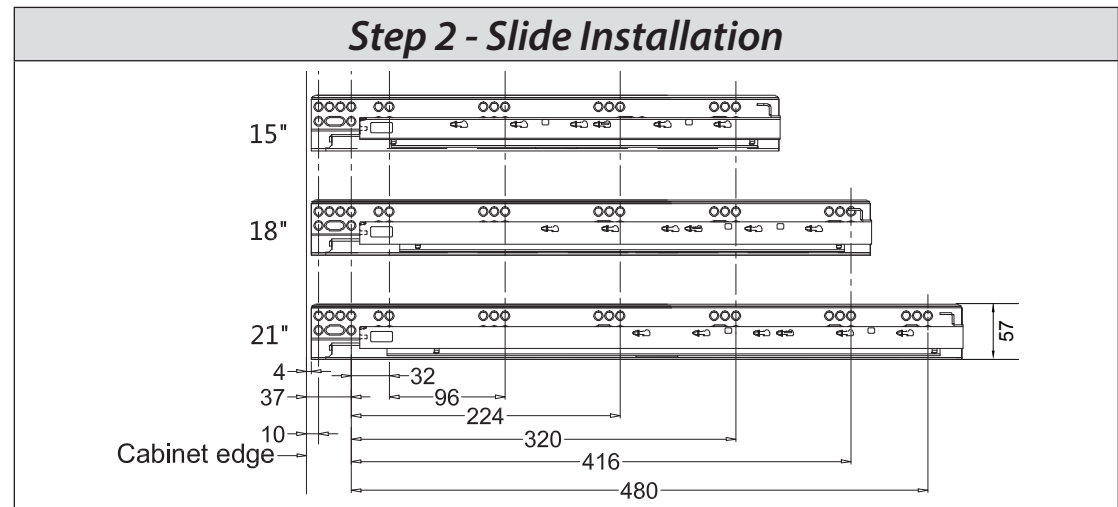
Part Dimensions

Item No.	Nominal length	Internal drawer length	Min. installation length of drawer
MDB500-089-15GR	381 mm	364 mm	399 mm
MDB500-089-18GR	457 mm	440 mm	475 mm
MDB500-089-21GR	533 mm	516 mm	551 mm

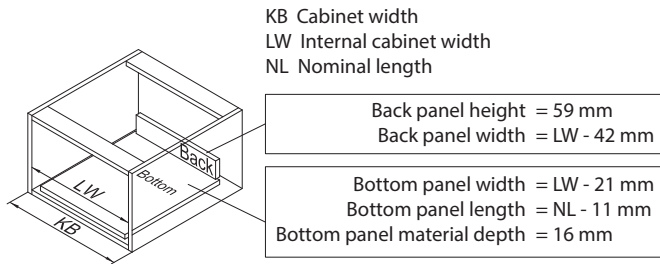
Step 1 - Installation Dimensions



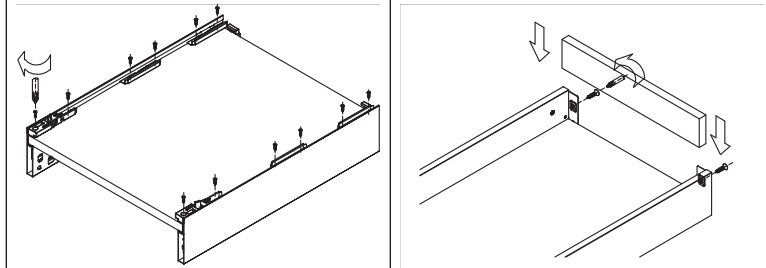
Step 2 - Slide Installation



Step 3 - Bottom & Back Panel Measurements

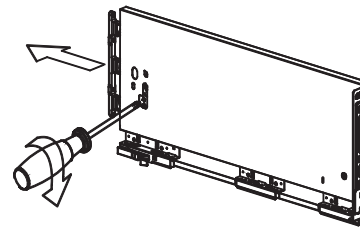


Step 4 - Drawer Assembly

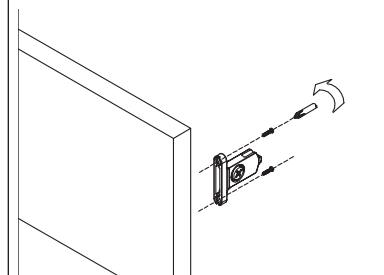


Using bottom screws, mount bottom drawer panel to sides

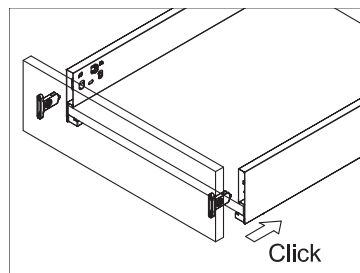
Install back drawer panel using mounting screws



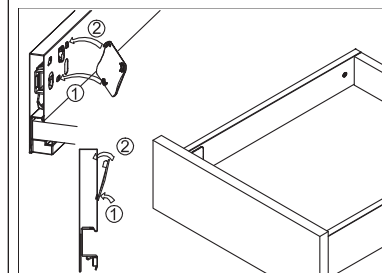
Front bracket release



Install front bracket according to specifications

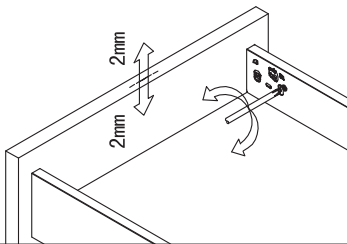


Snap drawer front into sides

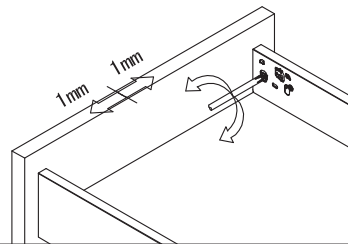


Install slide adjustment plate cover

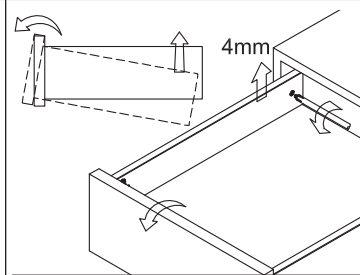
Step 5 - Drawer Adjustment



Drawer front height adjustment:
+/- 2 mm

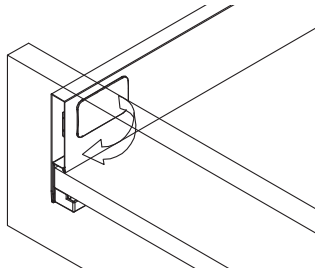


Drawer front side adjustment:
+/- 1 mm

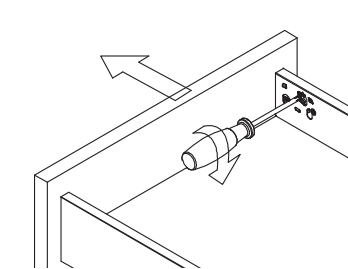


Drawer front angle adjustment:
4 mm

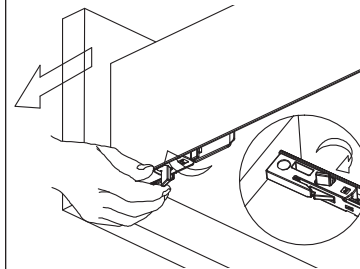
Step 6 - Drawer Removal



Remove slide adjustment plate cover



Use a Phillips head screw driver and rotate top center screw



Release undermount slide clip to remove drawer.