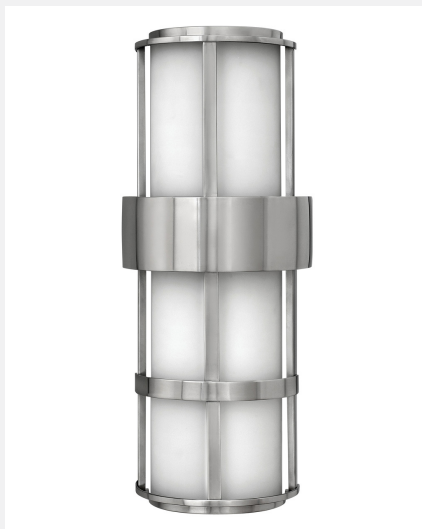


## Large Wall Mount Lantern 1909SS-LED



ITEM NUMBER	1909SS-LED
BRAND	Hinkley Lighting
MATERIAL	Stainless Steel
GLASS	Etched Opal
HEIGHT	20.5"
WIDTH	8.0"
LED COLOR TEMP	3000.0000
VOLTAGE	120v
LED LUMENS	1800
WATTAGE	23w LED *Included
TITLE	TWENTYFOUR DEC
CERTIFICATION	C-US Wet Rated
EXTENSION	4.5"
TOP TO OUTLET	10.5"
BACK PLATE	5.25"W X 20"H

### FEATURES AND BENEFITS

- Suitable for use in wet (interior direct splash and outdoor direct rain or sprinkler) locations as defined by NEC and CEC. Meets United States UL Underwriters Laboratories & CSA Canadian Standards Association Product Safety Standards
- Meets California Energy Commission 2016 Title regulations
- For complete warranty information visit [\(hyperlink\)](#)
- 2 year finish warranty
- LED components carry a 5-year limited warranty
- Bold lines and a clean, minimalist style complement contemporary architecture
- Superior strength and performance

FINISH                      Stainless Steel

AT HINKLEY, WE EMBRACE THE DESIGN PHILOSOPHY THAT YOU CAN MERGE TOGETHER THE LIGHTING, FURNITURE, ART, COLORS AND ACCESSORIES YOU LOVE INTO A BEAUTIFUL ENVIRONMENT THAT DEFINES YOUR OWN PERSONAL STYLE. WE HOPE YOU WILL BE INSPIRED BY OUR COMMITMENT TO KEEP YOUR 'LIFE AGLOW.'