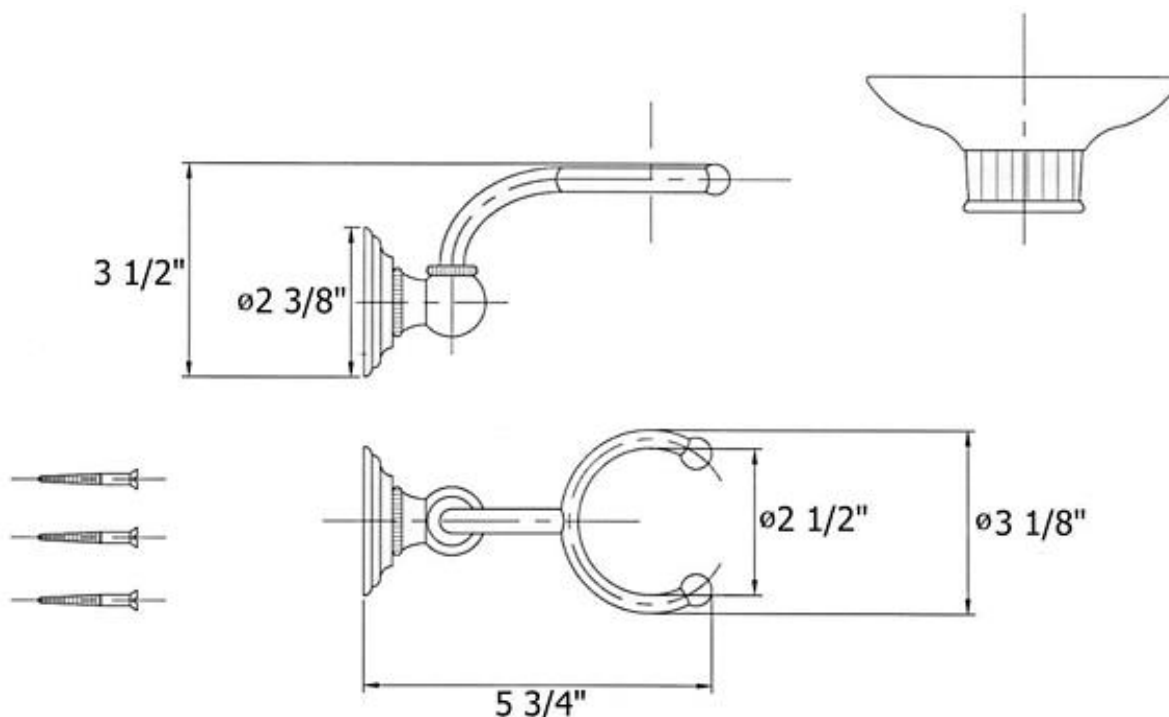


3111 – ‘Royale’ Soap Holder



Technical Information

- Includes ceramic dish - available in white only.
- Available finishes are French Weathered Brass (**47**), Polished Chrome (**48**), SoliBrass (**49**), Lacquered Matte Black Nickel (**50**), Old Gold (**52**), Old Silver (**53**), Polished Brass (**55**), Polished Nickel (**56**), Brushed Nickel (**57**), Satin Nickel (**60**), Antique Lacquered Copper (**67**), Antique Lacquered Brass (**68**), Weathered Brass (**70**), Lacquered Polished Black Nickel (**71**) and Lacquered Polished Copper (**80**).
- Please See Cleaning Instructions: <http://herbeau.com/CleaningAll.pdf> For Finish Care and Maintenance Information.

Part#

Description

- | | |
|-----|--|
| 01 | Mounting Screw Kit |
| 02 | Mounting Plate |
| 03 | Escutcheon |
| 04 | Connection For Escutcheon |
| 05 | Set Screw |
| 06 | Ball Joint |
| *07 | *Finished Holder-Awaiting Part Number Verification |
| 08 | White Ceramic Dish Only |

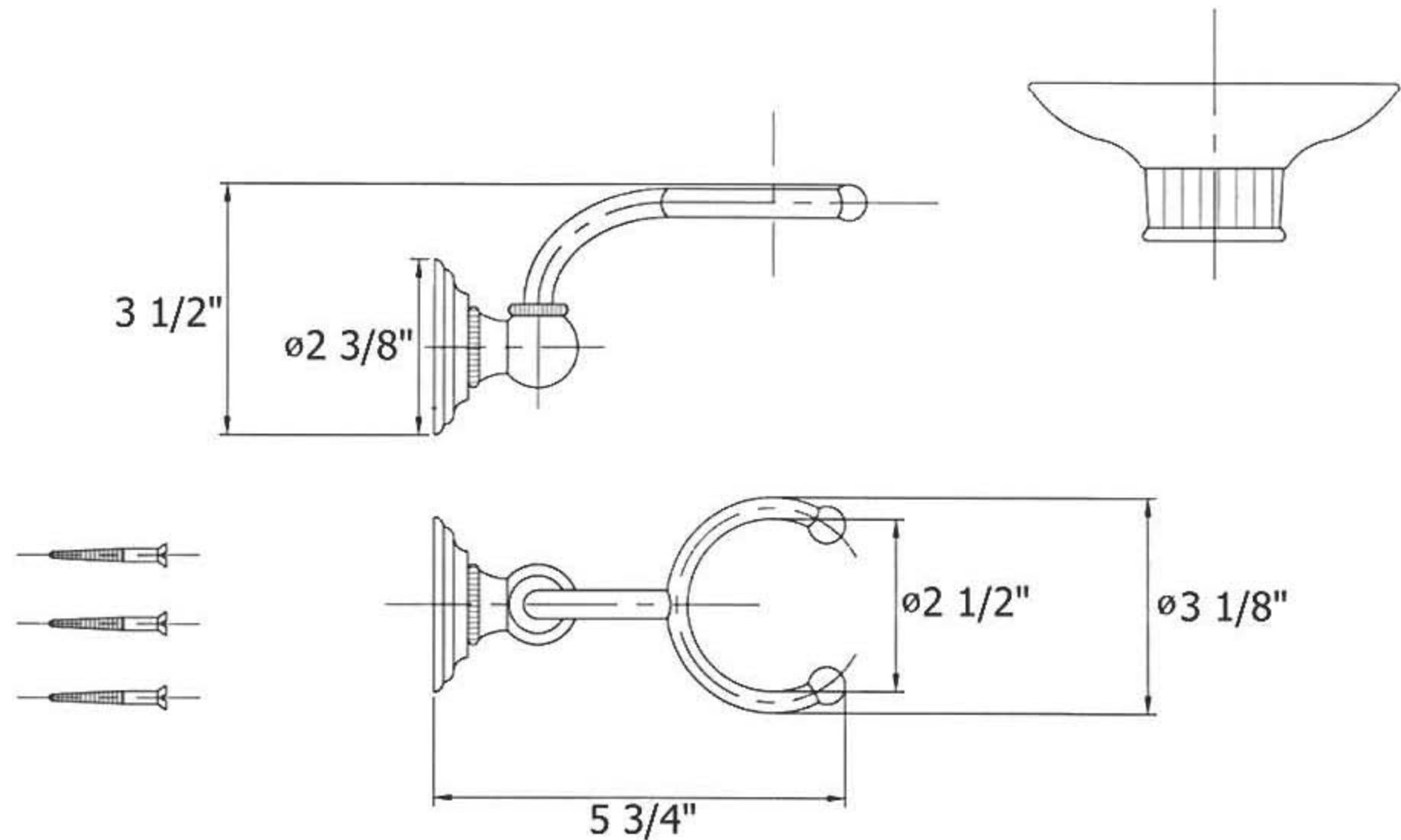
Please follow example when ordering parts for ‘Royale’ Soap Holder

- To order part#03 – Escutcheon
 - 950070xx
- Please substitute finish number needed in place of **xx**



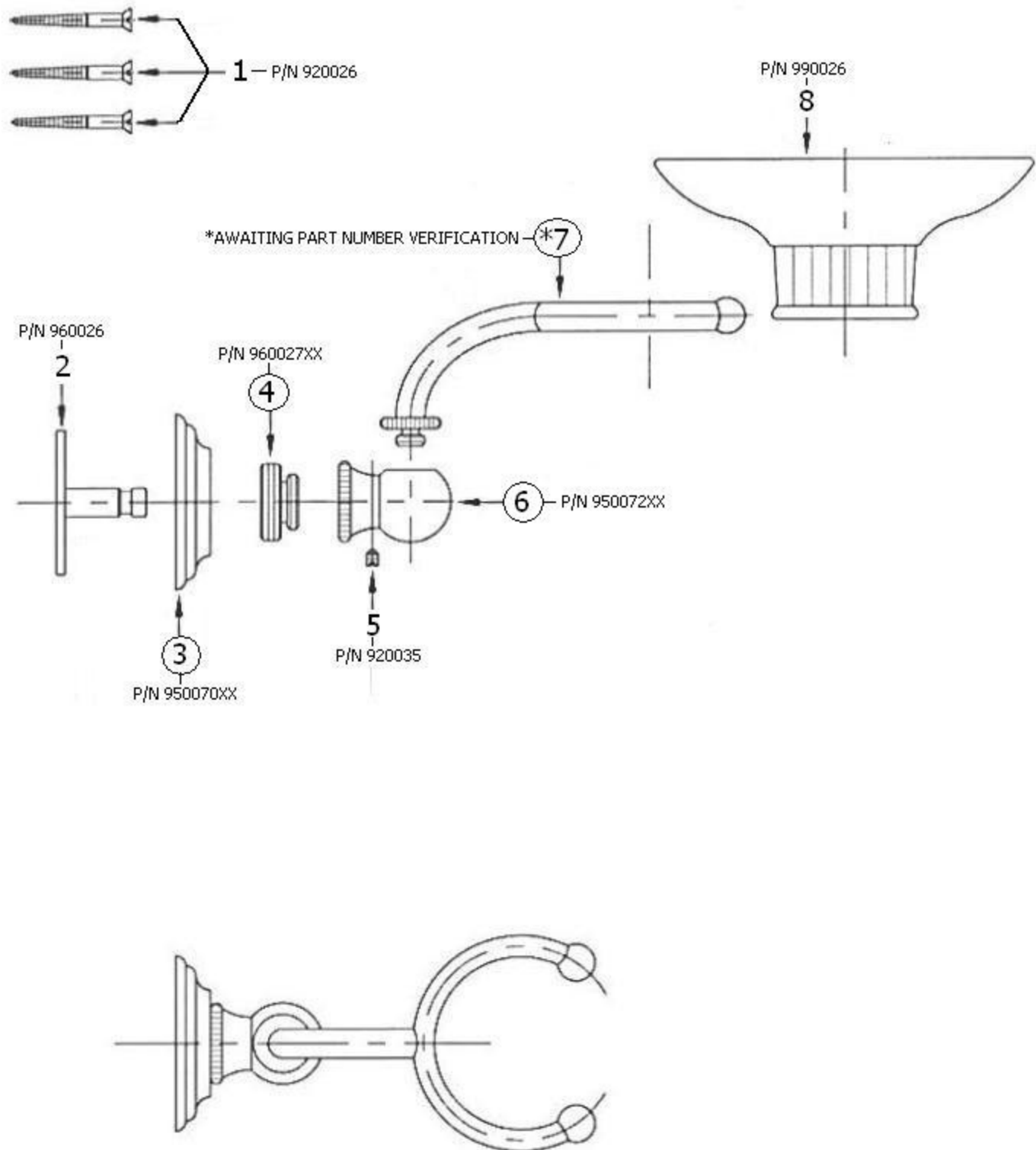
Herbeau®
L'Art du Sanitaire depuis 1857

3111 - 'Royale' Soap Holder



3111 - 'Royale' Soap Holder

*P/N = PART NUMBER



○ = FINISHED PARTS

XX = TWO DIGIT FINISH CODE