



TAS
Transfer Showers
 ONE-PIECE DOMED ACRYLIC
 TEXAS ACCESSIBILITY STANDARD

A 4136 IBS TAS

OD: 41.25" x 36.25" x 82.75"

ID: 36" x 36" Center Point

Weight: 160

Load Factor: 1.06

Handed By: Valve Wall L/R

This unit complies with TAS, ANSI Z124.2, ICC/ ANSI A117.1, UPC, HUD, ASTM F462, ASTM E84, ADA, ABA, BOCA, SBCCI, NAHB.

Warranty: Gelcoat models have a 3 year limited warranty. Acrylic models have a 5 year limited warranty. Pumps, parts, and accessories 1 year limited warranty. For further details please refer to the complete warranty section.

Due to the nature of the materials, dimensions may vary +/- 1/2".



Photograph Illustrates Package One - Handed by Valve Wall Left

PKG ONE - TAS: A 4136 IBS TAS

- .75" No Recess BF Threshold
- Mudded
- Handed by Valve Wall L/R
- White Premium Cast Acrylic

Factory Installed Accessories (Valve not included):

- L-Bar - 32.5" x 18" x 1.5" Smooth SS Radius
- S-BAR - 24" x 1.5" Smooth SS
- 34.5" X 21" Frameless HDPE RAD Fold Up Seat
- 1" OD 18 Gauge SS Grommet Style Curtain Rod

For TAS compliance, unit requires return flange to meet open floor space and unobstructed transfer; and installed accessories must include L-Bar and vertical S-Bar, 34.5" L-Seat, pressure balancing mixing valve, hand-held shower with slide bar, vacuum breaker, recessed receiver flange and 60" hose. Unit and accessories installed per TAS and Praxis installation and warranty guidelines.

BUILD TO ORDER BASE PLUS ACCESSORIES

BASE UNIT 1: A 4136 I TAS

- Specify Threshold Height
- Mudded
- Handed by Valve Wall L/R
- Reinforced for Standard Accessories

BASE UNIT 2: A 4136 I EB TAS

- .75" No Recess BF Threshold
- EasyBase™
- Handed by Valve Wall L/R
- Reinforced for Standard Accessories

BASE UNIT OPTIONAL ACCESSORIES

Standard Finish - Premium Cast Acrylic:

- White
- Bone
- Biscuit

Grab Bars

- S-Bar - 24" x 1.5" Smooth SS
- S-Bar - 24" x 1.25" Smooth White CC
- S-Bar - 24" x 1.25" Peened SS
- L-Bar - 32.5" x 18" x 1.5" Smooth SS Radius
- L-Bar - 32.5" x 18" x 1.25" Smooth White Radius
- L-Bar - 32.5" x 18" x 1.25" Peened SS Radius

Full Depth of Stall Seats (ADAAG 1991-2002)

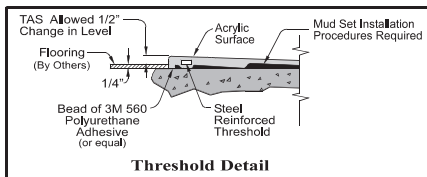
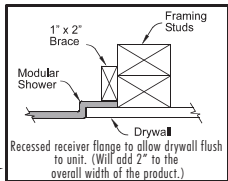
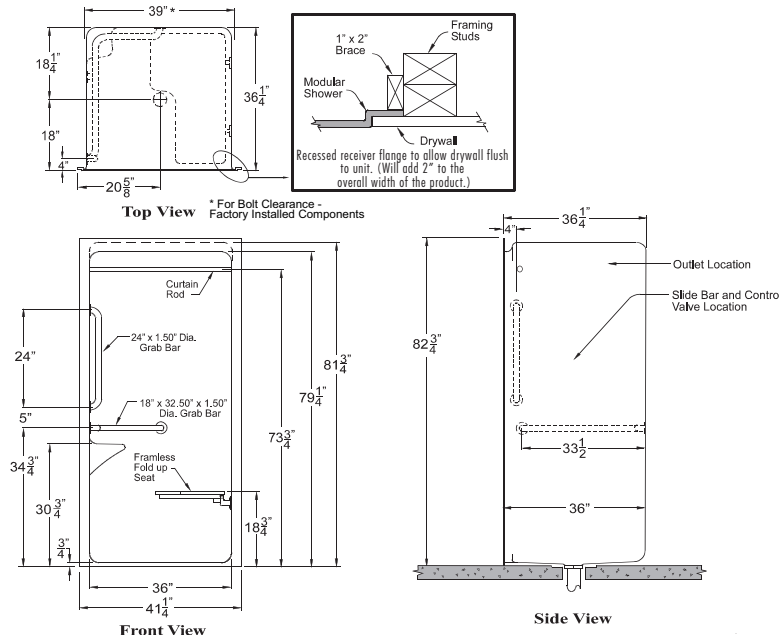
- 34.5" X 21" Frameless White HDPE RAD Fold Up Seat
- 34.5" X 21" Frameless White Padded RAD Fold Up Seat
- 34.5" X 21" Frameless Woodgrain Phenolic RAD Fold Up Seat

Factory Modifications

- Diamond Texture on Walls
- Modified Drain Location - Specify Location
- Domelight Drilling
- Valve Drilling - Specify Hole Size
- .75" No Recess BF Threshold
- 2" BF Threshold (Not Available with EasyBase™)
- Wood Reinforcement for HUD
- Full Wood Reinforcement
- ArmorShield P3 Protection
- Install 30" Slide Bar / HS Kit
- Install SS Soap Dish - Recessed
- Install Standard Symmons Valve Package
- Nurse Call Box Drilling - Specify Location
- 1" OD 18 Gauge SS Grommet Style Curtain Rod
- 1" OD 18 Gauge White Grommet Style Curtain Rod

Field Installed Accessories (Shipped Loose)

- No Caulk Drain - Chrome
- Semi-Permanent Threshold
- Collapsible Dam - White 42"
- Caps for Collapsible Dam - Pair
- Curtain - Premium 42" x 72" White Nylon Weighted
- Curtain - Heavy Duty 42" x 72" White Vinyl Weighted
- Dome Light - Voltage 144 Standard
- Dome Light - Voltage 277



FRAMING DIMENSIONS

A*	B	C	D
41 1/2"	36 1/4"	18 1/4"	18"

- Refer to pages 47 & 48 to view corresponding framing detail.
- * With optional recess receiver flange, add 2"
- 10" Diameter x .5" deep recess around drain core
- Unit must be installed into a recessed pit or build up finished floor to comply with TAS threshold guidelines.

HDPE (high density polyethylene) seats used by Praxis Companies, LLC contain recycled materials.