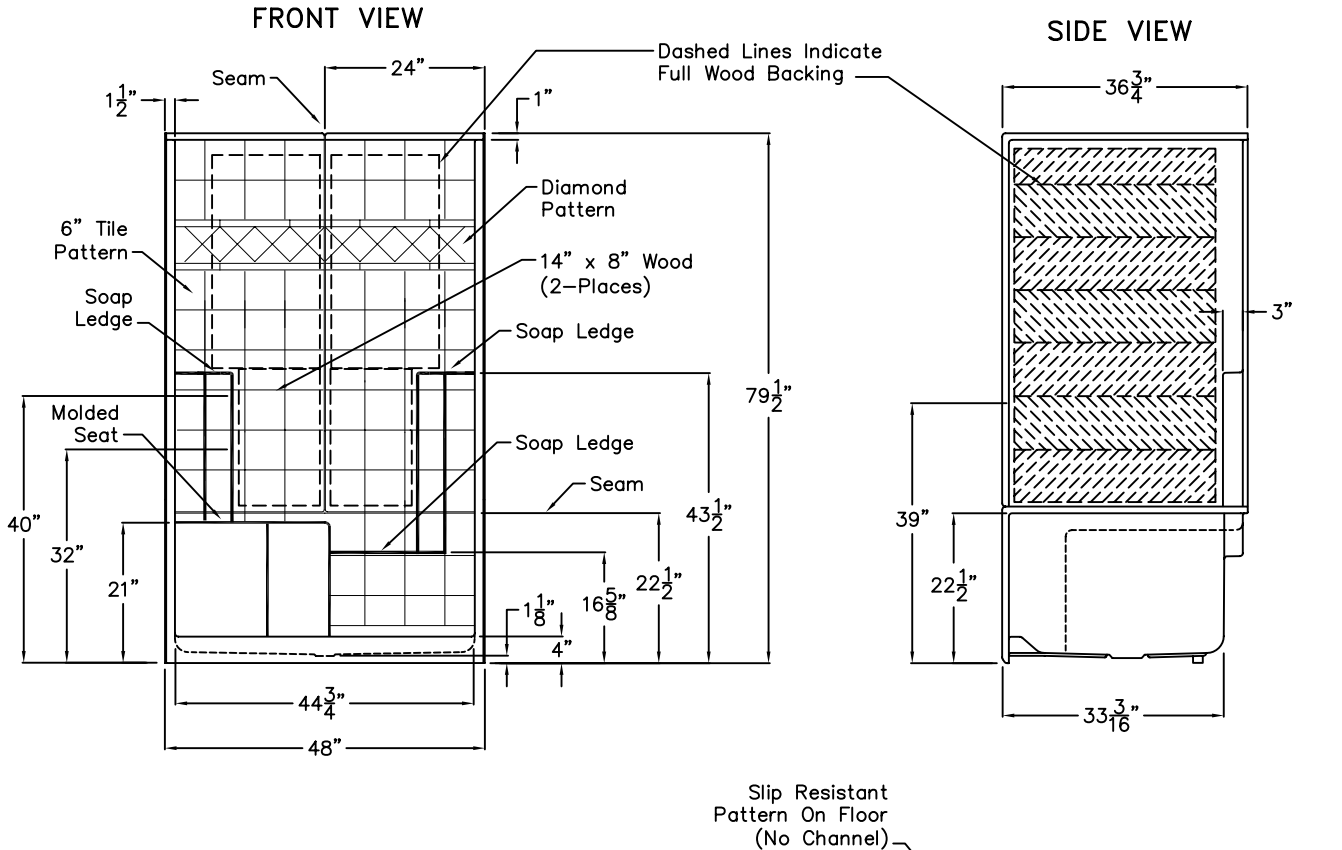


# LUXURY GELCOAT SERIES

## SUBMITTAL DATA © 2004



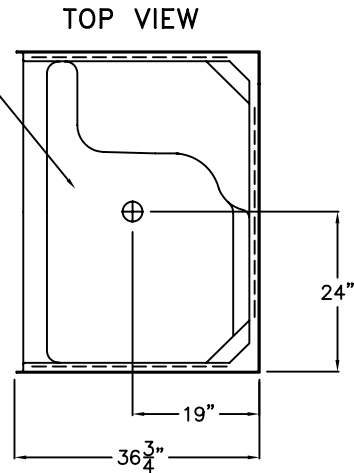
### Sectional Shower Stall

The shower enclosure shall be MP 3648 SH 1S 3P 4.0. Finished surface shall be of a sanitary-grade polyester Gelcoat exhibiting a minimal thickness of 15 dry mills, and a finished cured Barcol hardness of 80-90 as tested with ASTM D-2583. Unit construction shall be of molded reinforced fiberglass with a 15% minimum fiberglass content. The unit shall have outside dimensions of 48" x 36 3/4" x 79 1/2". The three piece unit shall meet ANSI Z124.2, NAHB, UPC, and shall meet the requirements of Southern Building Code.

The enclosure shall be equipped with the following installed accessories:

- 1) 1/2" thick oriented strand board full wood backing on the back wall,
- 2) 1/2" thick oriented strand board full wood backing on both side walls,
- 3) two molded soap dishes, 4) one lower leg ledge on back wall,
- 5) molded seat, 6) tile finish, 7) Three piece design, 8) 4.0" Threshold,

Available in left or right hand seat.



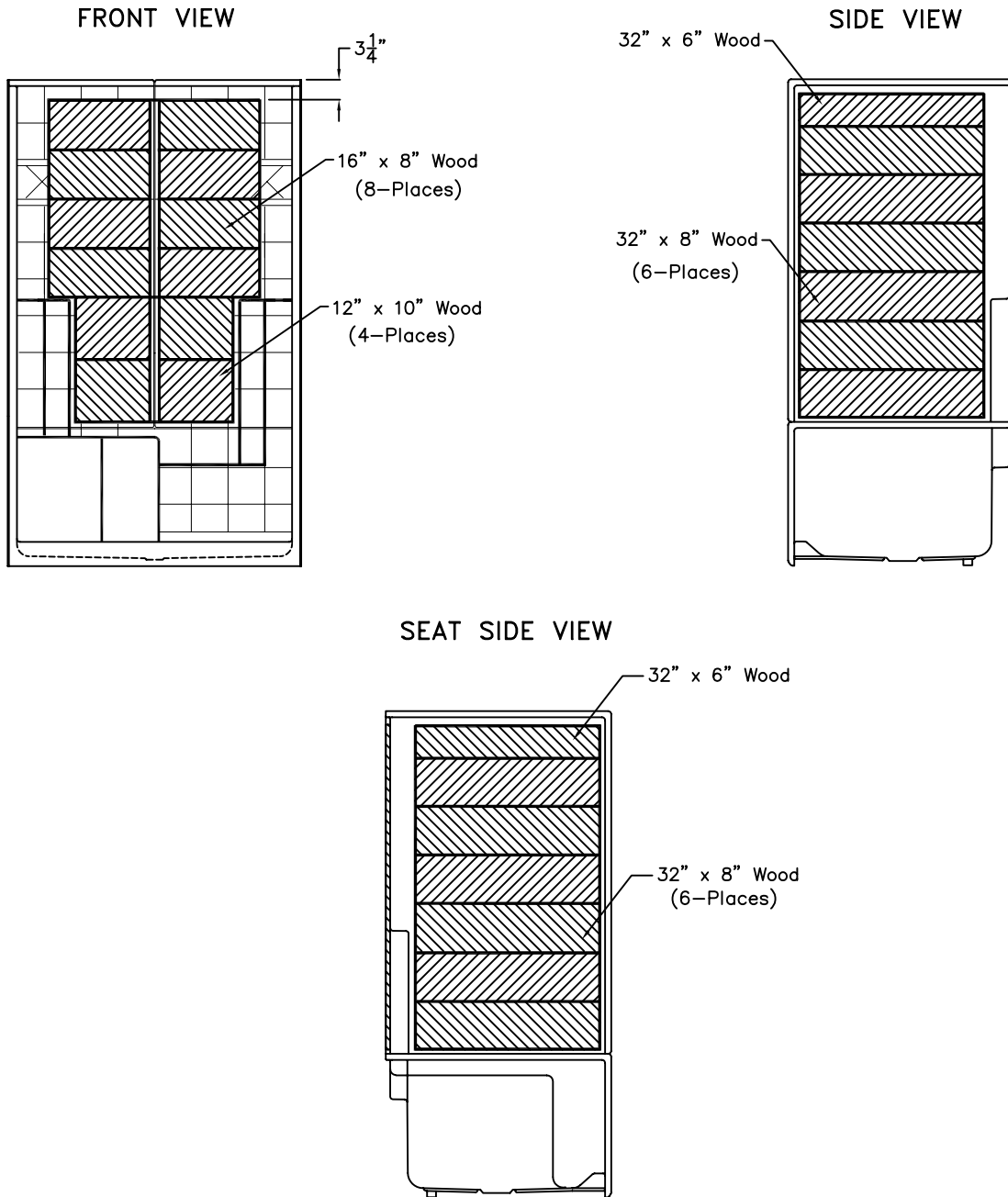
DUE TO THE NATURE OF THE MATERIALS INVOLVED  
UNIT DIMENSIONS MAY VARY ± 1/2 INCH

Job Name:		<b>AQUARIUS</b>	
Model No.:		Drawing: MP 3648 SH 4.0 1S 3P	
Approved by:	Date Approved:	Date: 9-7-2011	Revised:
Rep.:	Wholesaler:	Quote No.:	

PRAXIS INDUSTRIES, LLC.  
435 INDUSTRIAL RD - SAVANNAH, TN 38372  
1 (800) 443-7269 - FAX (731) 925-4290

# Board Placement Drawing

SUBMITTAL DATA © 2004



DUE TO THE NATURE OF THE MATERIALS INVOLVED  
UNIT DIMENSIONS MAY VARY ± 1/2 INCH

Job Name:	AQUARIUS	
Model No.:	Drawing: MP 3648 SH 4.0 1S 3P-BP	
Approved by:	Date Approved:	Date: 9-7-2011
Rep.:	Wholesaler:	Quote No.:

PRAXIS INDUSTRIES, LLC.  
435 INDUSTRIAL RD - SAVANNAH, TN 38372  
1 (800) 443-7269 - FAX (731) 925-4290