

CUSTOMER: \_\_\_\_\_

JOB NAME: \_\_\_\_\_

PO #: \_\_\_\_\_ QUOTE # \_\_\_\_\_

DATE: \_\_\_\_\_ QUANTITY: L \_\_\_\_\_ R \_\_\_\_\_

SHIP TO: \_\_\_\_\_

One Signature Required

PLUMBING CONTRACTOR APPROVAL \_\_\_\_\_ /\_\_\_\_\_/\_\_\_\_\_  
DATE

GENERAL CONTRACTOR APPROVAL \_\_\_\_\_ /\_\_\_\_\_/\_\_\_\_\_  
DATE

ENGINEER APPROVAL \_\_\_\_\_ /\_\_\_\_\_/\_\_\_\_\_  
DATE

ARCHITECT APPROVAL \_\_\_\_\_ /\_\_\_\_\_/\_\_\_\_\_  
DATE

To complete your order, this document must be signed and emailed to the Centralized Customer Service Center.  
**quotes@americanbathgroup.com • 800.443.7269**

**STANDARD FEATURES**

- Pre-leveled base
- AcrylX™ applied acrylic surface
- 1 1/8" skirt
- Compliant when properly installed
- Center front drain outlet
- Integral front trench drain
- 5-year limited warranty
- 12" x 24" subway tile
- Slip resistant, textured bottom [ASTM F-462]

Int. Dim.	60 W x 34 D x 88 3/4 H
Ext. Dim.	66 W x 36 1/8 D x 91 H
Skirt Ht.	1 1/8 skirt
Packaged Wt.	210 lbs.
Material	AcrylX™ applied acrylic
Warranty	30-year warranty*

\* See terms and conditions for details

inches

**CONFIGURATION (handed by the seat)**

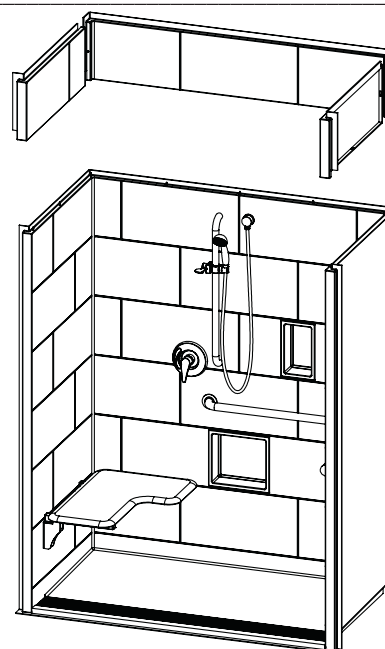
- Shell reinforced for future accessory installation
  - Seat Wall  LH  RH
  - Optional vertical bar reinforcement (entry wall)
    - LH  RH  Both
- Fully configured — ADA/ANSI
  - Seat Wall (must choose one)  LH  RH
  - Includes one stainless steel 24" x 1 1/2" grab bar located on the side wall, one stainless steel 30" x 1 1/2" grab bar located on the back wall, stainless steel grate and cushioned, white, L-shaped fold-up seat, per ADA/ANSI guidelines. (std config)
  - Factory-installed plumbing options per ADA requirements
    - Hand-held shower assembly, 30" slide bar and 60" hose
    - Pressure balancing mixing valve

**OPTIONAL ACCESSORIES (available for all models)**

- Stainless steel vertical bar 24" x 1 1/2" (entry wall)
  - LH  RH  Both
- Large soap dish (12 1/2 W x 3 1/2 D x 1 1/2 H), shipped loose
- Small soap dish (7 W x 3 1/2 D x 1 1/2 H), shipped loose
- Curtain rod, shipped loose
- Shower curtain, shipped loose
- Brass drain
- Colors:
  - Standard  White
  - Upgraded  Biscuit  Bone
  - Other (contact customer service for custom color options)
- Additional accessories:

**CUSTOM OPTIONS (not avail. if ADA/ANSI configuration is selected)**

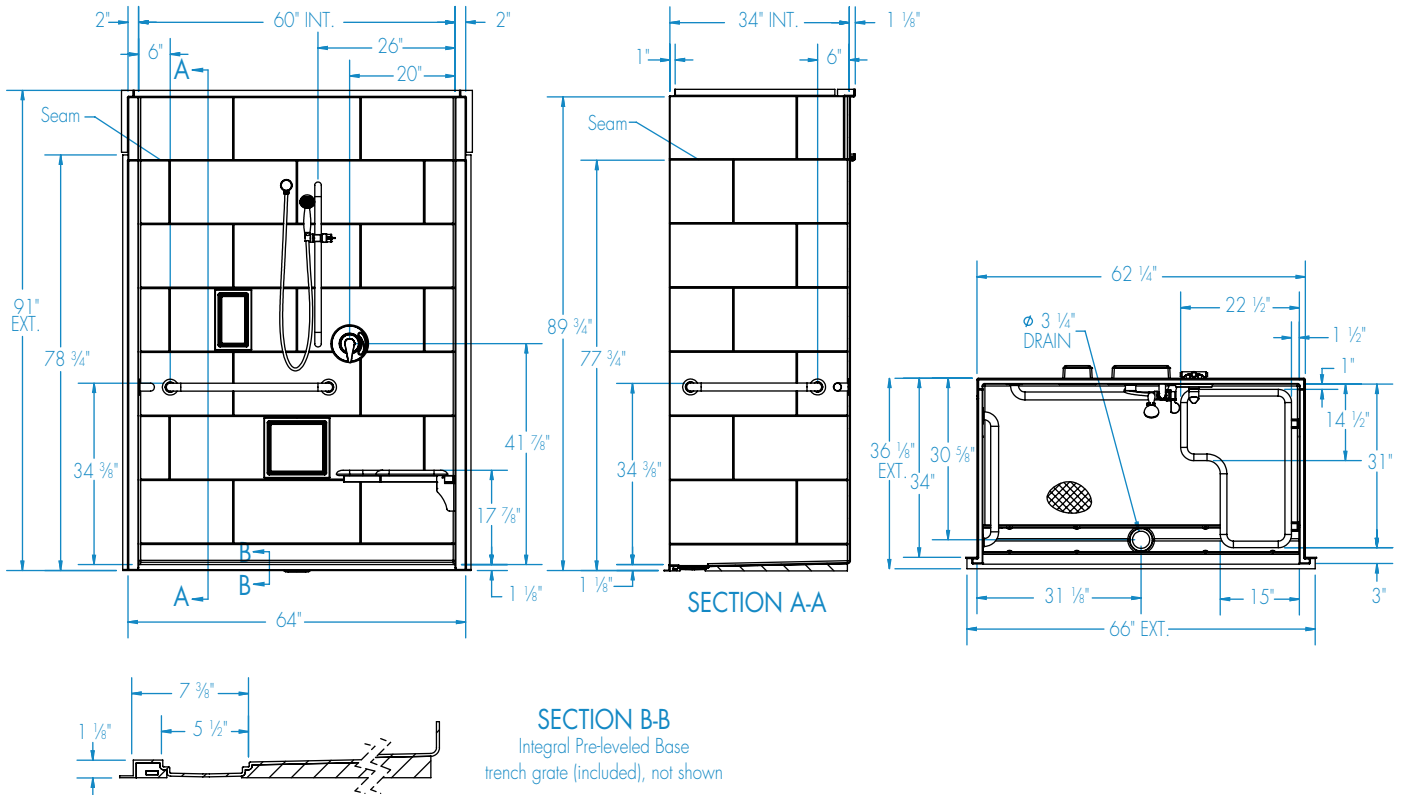
- Handed by the seat  LH  RH
- Reinforced for future seat installation
- L-shaped fold-up seat
  - Cushioned white  Phenolic teak  Phenolic white
- Grab bars:
  - Horizontal L-shaped bars: 24" (side wall) and 30" (back wall)
  - Vertical bar 24" (entry wall)  LH  RH  Both
- Grab Bar finish:
  - Stainless steel (1 1/2" dia.)
  - Powder-coated white (1 1/4" dia.)
- Factory-installed plumbing options per ADA requirements
  - Hand-held shower assembly, 30" slide bar and 60" hose
  - Pressure balancing mixing valve
- Grate:
  - Stainless steel
  - White
  - Tamper-proof



Left hand configuration  
shown with optional soap dish



ADA/ANSI compliant when fully equipped and installed according to guidelines.



**FEATURES** lbs Dimensional Tolerance  $\pm \frac{3}{8}$ ". Dimensions needed for site preparation should be measured from the unit. Manufacturer assumes no responsibility for preparatory work.

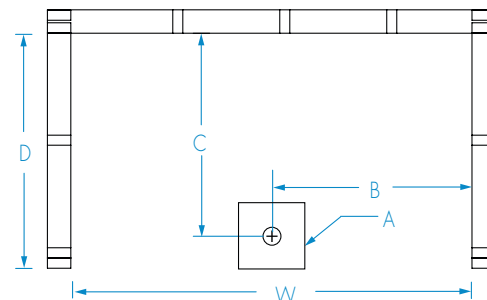
Type and Model #	Material	Wall Finish	Pieces	Drain	Dam/Skirt Height	Net Wt.	Pkg. Wt.
Shower HMT6236TR 1.125 (HS)	AcrylX™ applied acrylic	Smooth tile	4	Center Front	1 1/8" skirt	200	210

**DIMENSIONS**

Specifications	inches (mm)
Width: Ext. / Int.	66 / 60
Depth: Ext. / Int.	36 1/8 / 34
Height: Ext. / Int.	91 / 88 3/4
Enclosure Opening:	60
Skirt Height:	1 1/8
Drain Rough-In (from Back Wall)	30 5/8
Drain Rough-In (from Side Wall)	31 1/8

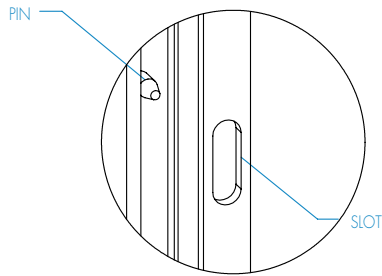
**FRAMING DIMENSIONS** inches (mm)

Type	D Depth	W Width	H Height	A	B	C
Alcove	34	62 1/4	-	Box Out	31 1/8	30 5/8

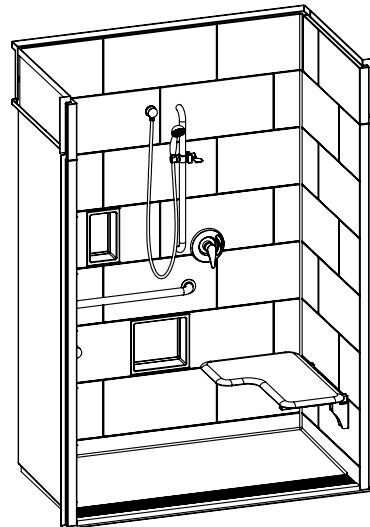
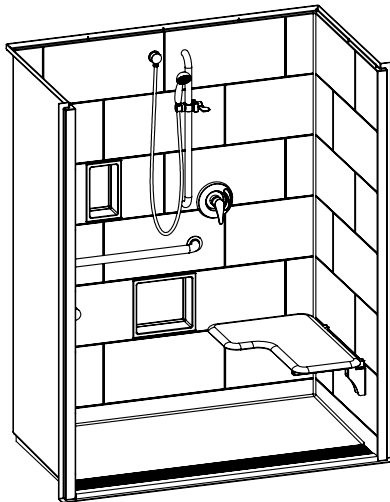
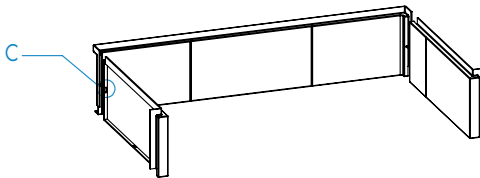


EMAIL TO THE CENTRALIZED CUSTOMER SERVICE CENTER: [quotes@americanbathgroup.com](mailto:quotes@americanbathgroup.com)

High Style Attachment



DETAIL C



Curtain Rod and Soap Dish Locations (Standard Valve Configuration)

