

**Croma**  
**Showerpipe 160 1-Jet with Pressure Balance, 2.0 GPM**  
 Finishes : **chrome** Part no. : **04530000**



## Description

### Features

- consists of: Showerhead, Handshower, Single lever shower mixer, Handshower hose, Slider
- Flow: 2.0 GPM (7.6 L/Min)
- Exposed installation
- Pressure balance cartridge
- Locking push-button diverts flow to handshower

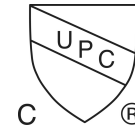
## Item details

List Price \$ 785.00

## Technology



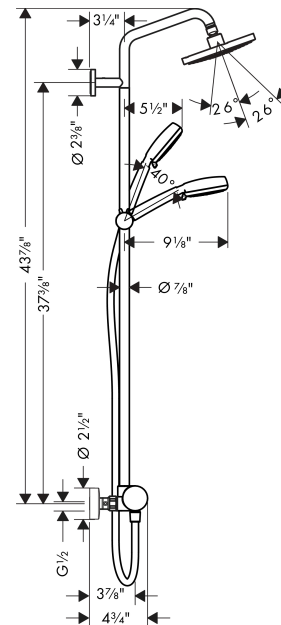
## Compliance



## Product image



## Scale drawing

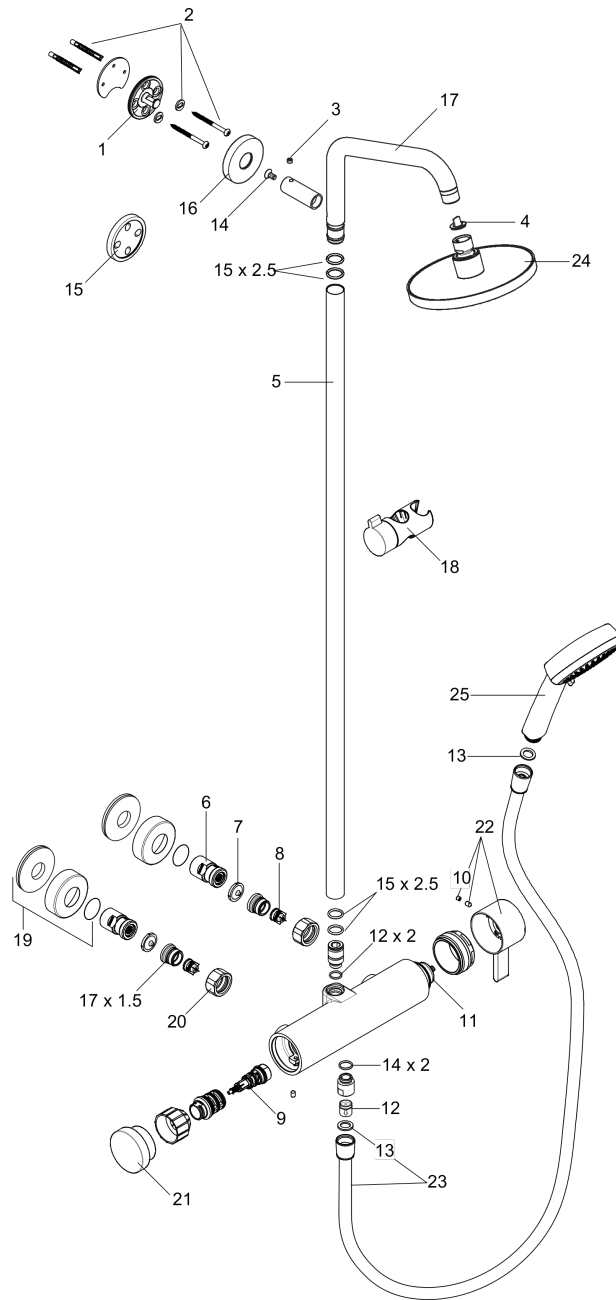


**Croma**  
**Showerpipe 160 1-Jet with Pressure Balance, 2.0 GPM**  
 Finishes : **chrome**    Part no. : **04530000**



Exploded drawing

Year of production: >07/15



**Croma**  
**Showerpipe 160 1-Jet with Pressure Balance, 2.0 GPM**  
 Finishes : **chrome** Part no. : **04530000**



## Spare parts list

Year of production: >07/15

Pos.	Description	Part no.	Price	PU
1	wall flange	95688000	-	1
2	mounting set	96179000	-	1
3	hollow set screw M6x5	98447000	-	1
4	filter packing	88649000	-	1
5	pipe 1450 mm	96770000	-	1
6	isolation valve	98341000	-	1
7	filter packing	96922000	-	1
8	non return valve	96737000	-	1
9	selector (invers)	95657000	-	1
10	screw cover	95181000	-	1
11	cartridge, assy	88727000	-	1
12	non return valve	97980000	-	1
13	seal	98058000	-	1
14	screw	92137000	-	1
15	tile-matching-disk	95239000	-	1
16	escutcheon Ø 60 mm	95692000	-	1
17	shower arm	95137000	-	1
18	support, assy	95160000	-	1
19	escutcheon	98340000	-	1
20	set of nuts	96157000	-	1
21	handle	92619001	-	1
22	handle	88763000	-	1
23	shower hose 1,60 m	28276003	-	1
24	showerhead cpl.	28450001	-	1
25	handshower	04083000	-	1