

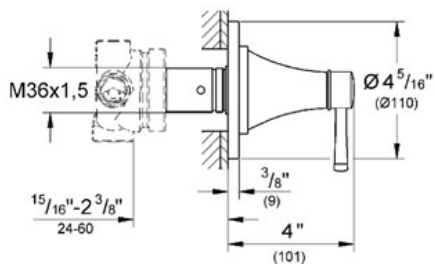
GRANDERA 5-Port Diverter Trim

MODEL # 19942

Pure Freude an Wasser

GROHE

GROHE America, Inc | 200 North Gary Avenue, Suite G, Roselle, IL 60172
Phone: +1 (800) 444-7643 | Fax: +1 (800) 225-2778 | us-customerservice@grohe.com



ADA

Product Description: 5-Port Diverter Trim

Standard Specification:

- GROHE StarLight® finish
- Set for final installation for
- 29 708 000
 - Without concealed body
 - 29 714 000
 - Adjustable installation depth
 - 2 1/2" - 4 1/2"
 - Min. recommended pressure 15 psi

Applicable Codes & Standards:

- Energy Policy Act of 1992
- ASME A112.18.1/CSA B125.1
- ICC/ANSI A117.1

Color:

- 19942 000 chrome
- 19942 EN0 Brushed Nickel