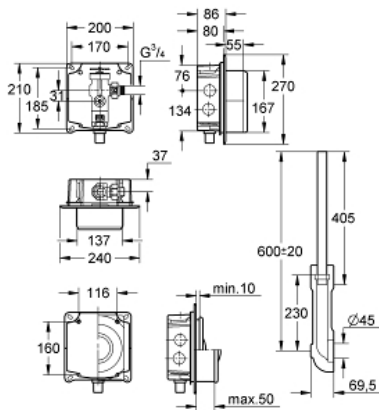


Wall Carrier Toilet Flush Valve

MODEL # 37153000

Pure Freude
an Wasser

GROHE



Product Description:

Wall Carrier Toilet Flush Valve

Standard Specification:

- Concealed installation
- 3/4"
- **Stop valve**
- **1.6 - 2.4 gal** adjustable
- Flow pressure range from 18 - 75 psi
- With flow rate adjustment
- Box for concealed installation with flush elbow
- Flush pipe (adjustable in length)
- **Without wall plate/actuation**
- Low noise (group I acc. to/German Noise Specification)

Color:

□ 37153000