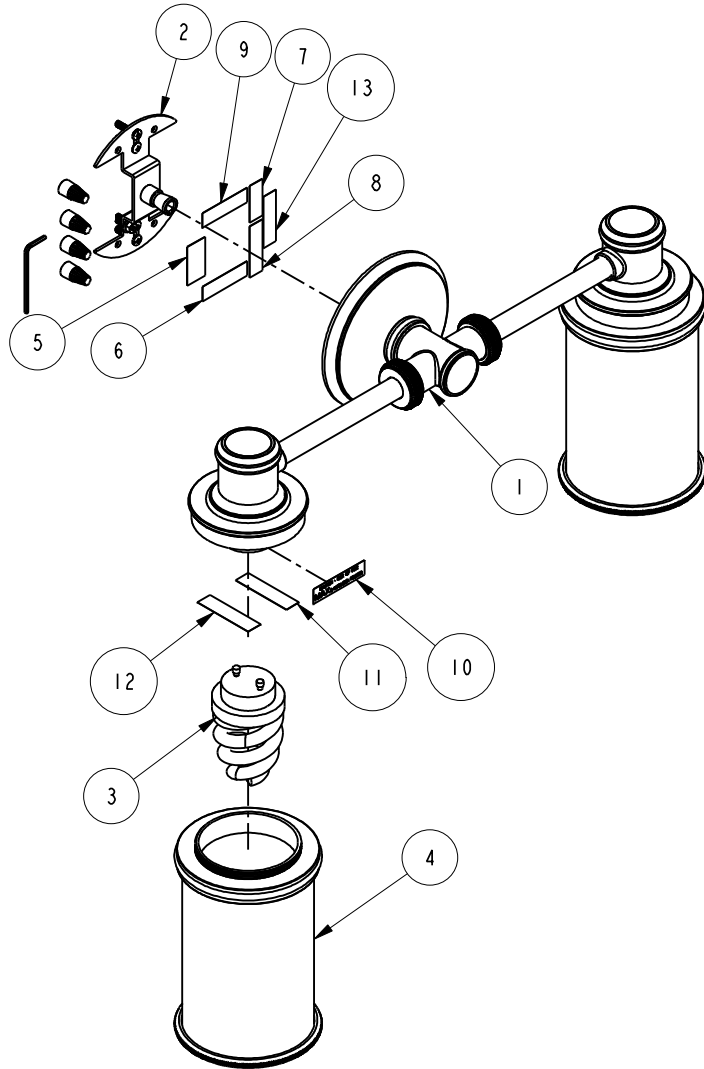


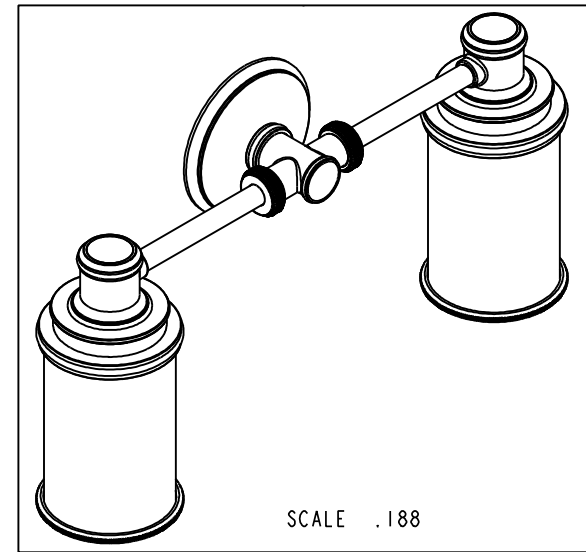
NOTES:

(N1) 1. FIT / FORM / FUNCTION SHALL FOLLOW PS-E.008.



BILL OF MATERIAL (CURRENT LEVEL)

ITEM	PT/ASSY	DESCRIPTION	TYPE	QTY.
1	4582-BAW	DOUBLE LIGHT BODY WIRED	ASSEMBLY	1
2	CB-002	LIGHT MOUNTING PACK	ASSEMBLY	1
3	GU24-18W	GU24 COMPACT FLUORESCENT SPRIAL MAX. DIA. 2 3/8" MAX. LENGTH 4"	PART	2
4	4581-G-E	4581-G-E	ASSEMBLY	2
5	98006	LABEL, UL LISTED	PART	1
6	98069	LABEL, PNXXX, SUITABLE FOR DAMP LOCATIONS	PART	1
7	98070	LABEL, MONTH YEAR E191501	PART	1
8	98012	LABEL, WALL MOUNT ONLY	PART	1
9	98081	LABEL, 120V / 60H / 18W	PART	1
10	98072	LABEL, 18 WATT MAX SBCFL PERMITTED	PART	2
11	98067	LABEL, USE SBCFL MARKED NOT FOR USE WHERE DIRECTLY EXPOSED TO WATER	PART	2
12	98065	LABEL, DO NOT USE SBCFL MARKED NOT FOR USE IN TOTALLY ENCLOSED LUMINAIRES	PART	2
13	98088	LABEL, MIN 75 C SUPPLY CONDUCTORS	PART	1



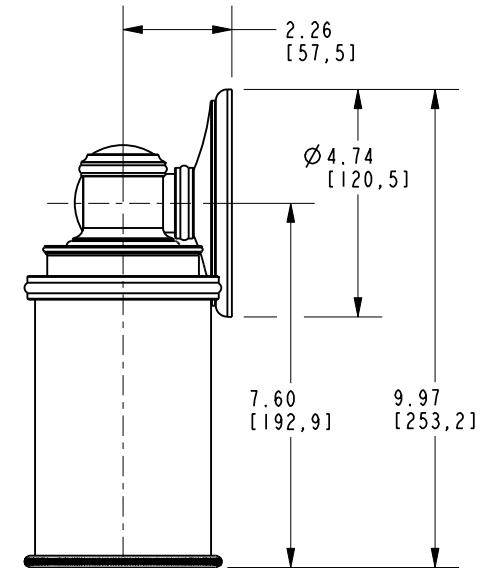
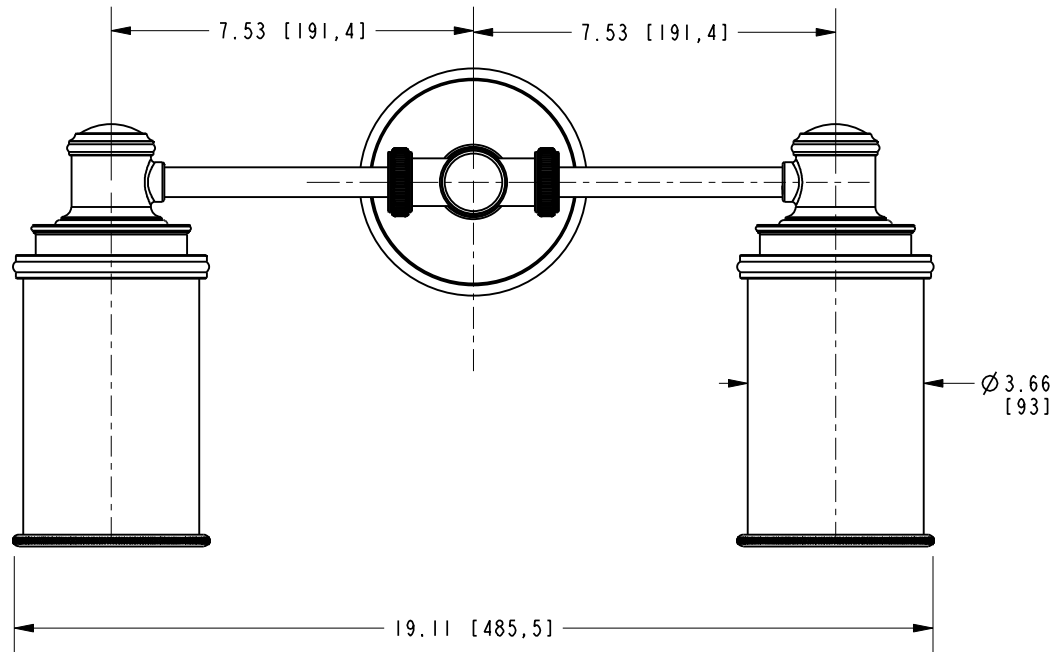
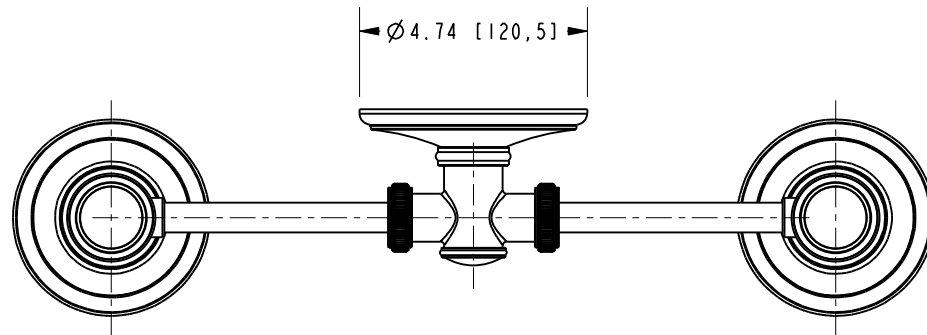
TESTING	-	-	-	UNITS ARE: INCHES [MM]
ASSEMBLY	-	-	-	TOLERANCES ARE:
PLATING	-	-	-	FRACTIONS DECIMALS ANGLES
POLISHING	-	NEXT ASSY	USED ON	±1/16" .X ±.1 [2,5] ±1"
MACHINING	-			.XX ±.06 [1,3]
TOOLING FIXTURE #				(X.XXX) DENOTES CRITICAL DIMS. ALL THREADS ARE CRITICAL
				DRAWN VINAY 08/29/16
				CHECKED RAVINDRA 08/29/16
				APPROVED R.S. 08/29/16
				APPLICATION REMOVE ALL BURRS AND SHARP EDGES

BRASSTECH 2001 CARNEGIE AVE. SANTA ANA, CA 92705 (949) 417-5207
INCORPORATED

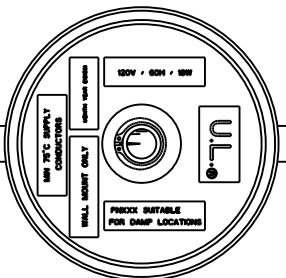
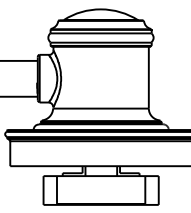
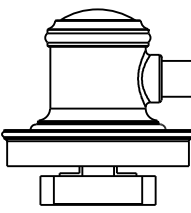
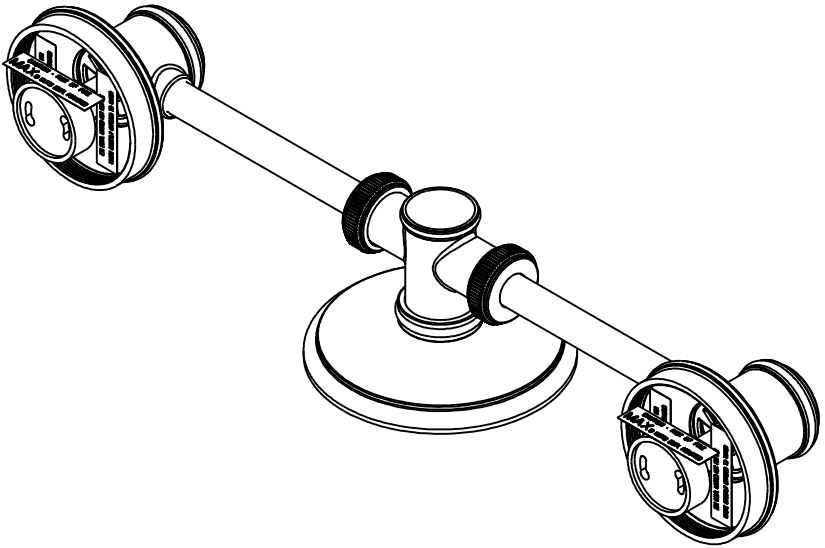
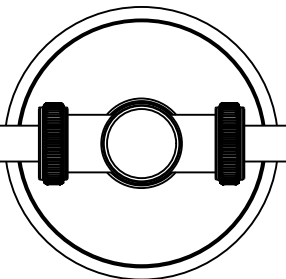
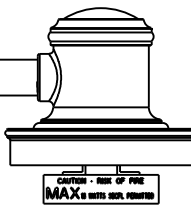
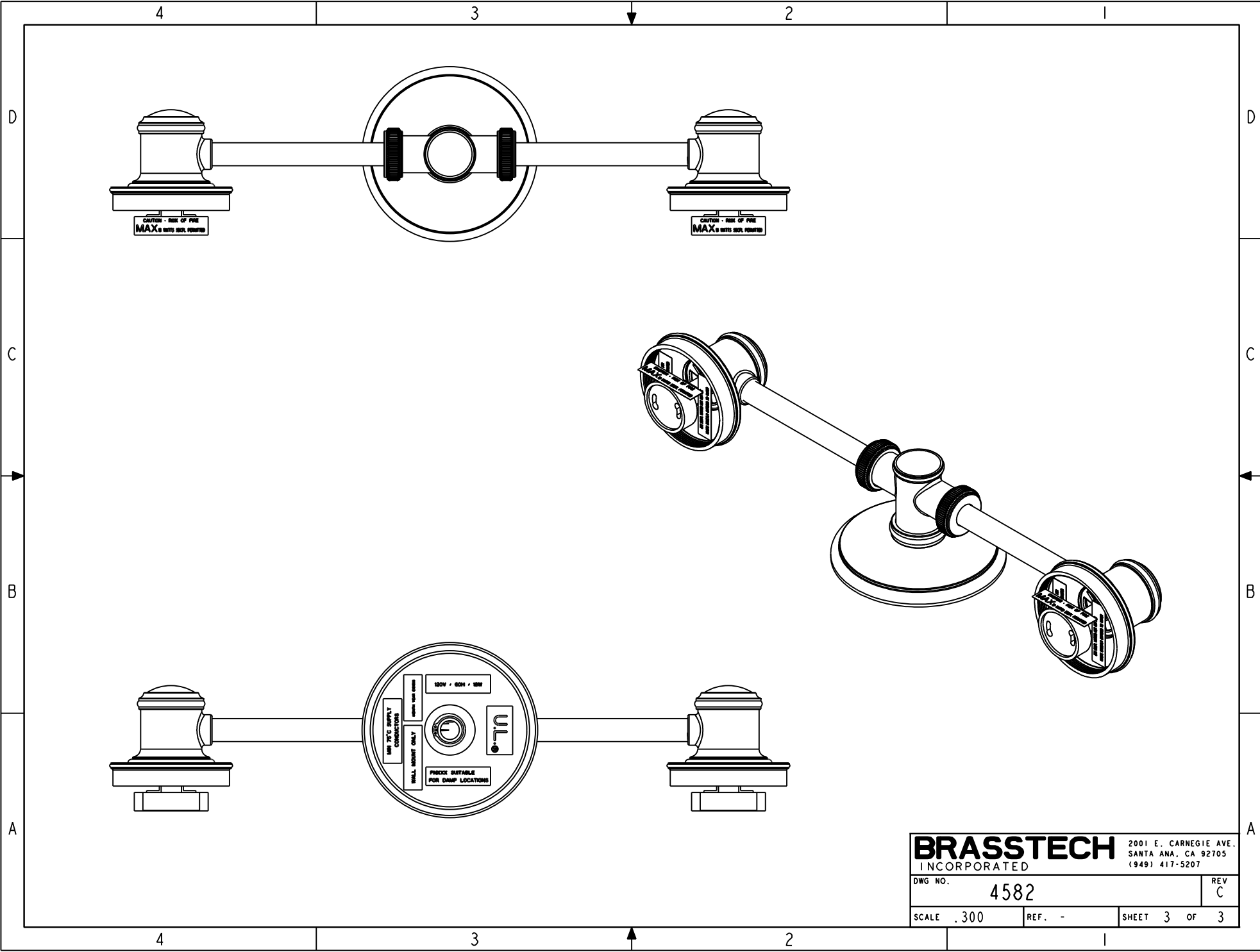
DOUBLE LIGHT

-	C	EN-3127	08/29/16	R.S.	COPYRIGHT 2005 BRASSTECH, INC. THESE DRAWINGS AND THE DESIGNS DEPICTED HEREIN ARE THE PROPRIETARY PROPERTY OF BRASSTECH. ANY USE OR REPRODUCTION IS SUBJECT TO THE EXPRESS APPROVAL OF BRASSTECH. UNAUTHORIZED USE IS STRICTLY PROHIBITED. ALL RIGHTS RESERVED.
-	B	EN-4127	12/31/09	-	
-	A	EO-0916	11/27/07	-	
ZONE	REV	DESCRIPTION	DATE	APPROVED	

DWG NO.	4582	REV	C
SCALE	.188	REF.	-
SHEET	1	OF	3



BRASSTECH		2001 E. CARNEGIE AVE.	
INCORPORATED		SANTA ANA, CA 92705	
		(949) 417-5207	
DWG NO.	4582	REV	C
SCALE	.250	REF.	-
		SHEET	2 OF 3



BRASSTECH		2001 E. CARNEGIE AVE.	
INCORPORATED		SANTA ANA, CA 92705	
		(949) 417-5207	
DWG NO.	4582	REV	C
SCALE	.300	REF.	-
		SHEET	3 OF 3