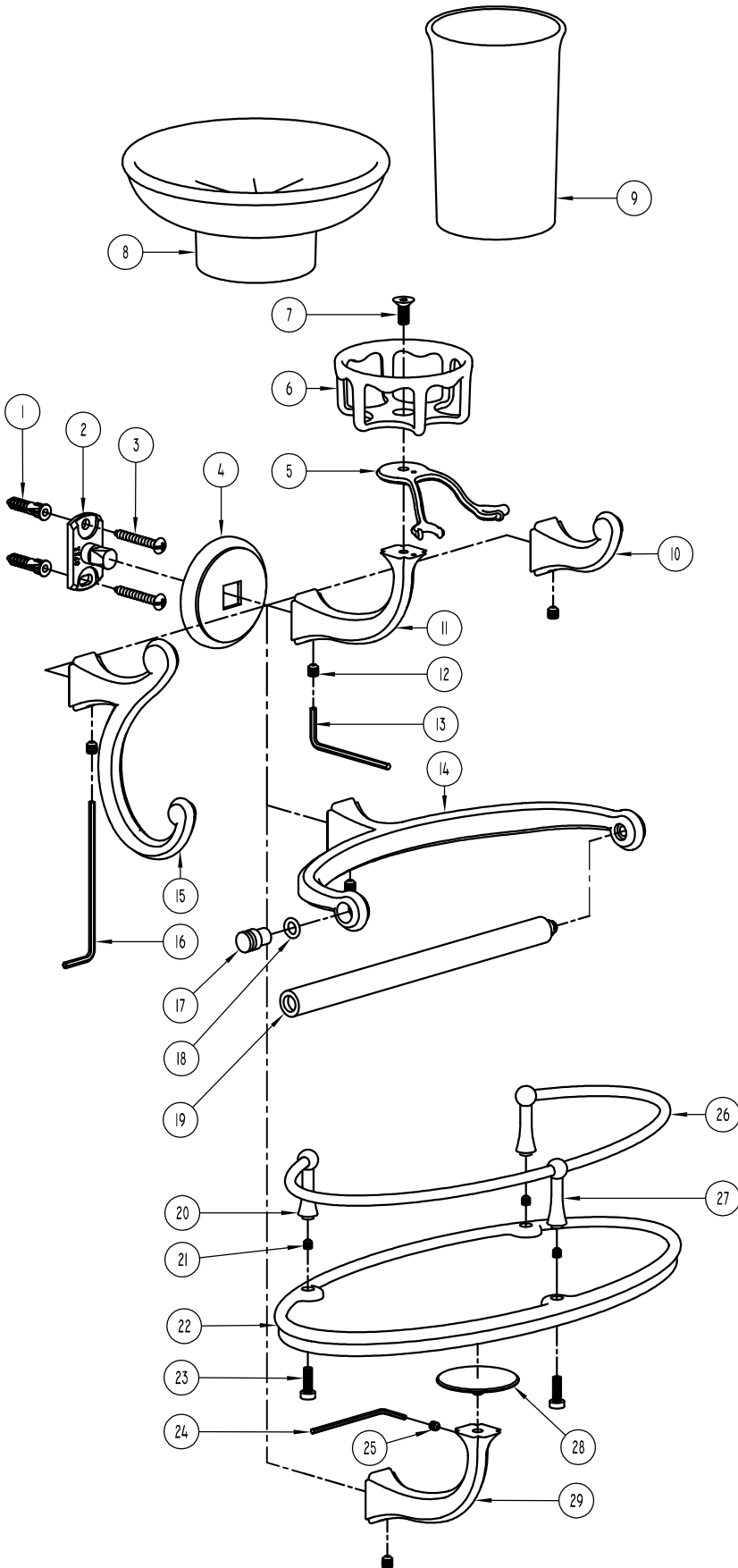


# CIRCE



ITEM	PART NAME	PART NO.
1	NO 8 WALL ANCHOR	CA
2	MOUNTING BRACKET	07XX
3	NO 8 X 1-1/4" TAP SCREW	8-1.2CPZ
4	ROSETTE	0700F *
5	TOOTHBRUSH HOLDER (OPTIONAL)	0738H *
6	SOAP DISH/TUMBLER HOLDER	0712R *
7	M5 X 12 SCREW	M5-12FS-K
8	WHITE PORCELAIN SOAP DISH	0700SPW
9	WHITE PORCELAIN TUMBLER	0700TPW
10	SMALL HOOK POST	0710P *
11	ARM	0712P *
12	M5 X 5 SET SCREW	SM5-5S
13	2-1/2 MM HEX KEY	M2.5HK
14	TOWEL RING FRAME	0705P *
15	LARGE HOOK POST	0711P *
16	M2-5HEXKEY LONG-ARM	M2.5HKL
17	TOWEL RING PIN	0705CP *
18	O-RING	RM6-2
19	TOWEL RING ROD	0705R *
20	TRAY RAIL END POST	36EP *
21	M4 X 4 SET SCREW	SM4-4A
22	FIXED PORCELAIN PLATTER	0736TP
23	M4 X 12 SCREW	M4-12KS-L
24	M2 HEX KEY	M2HK
25	M4 X 4 SET SCREW	SM4-4S
26	ELLIPTICAL TRAY RAIL	0736R *
27	TRAY RAIL THROUGH POST	36TP *
28	TRAY SPINDLE	36S *
29	TRAY SUPPORT ARM	0736P *

\* REQUIRES FINISH CODE

CIRCE FINISHES:

- 3 POLISHED BRASS
- 10B OIL RUBBED BRONZE
- 15 SATIN NICKEL
- 26 POLISHED CHROME