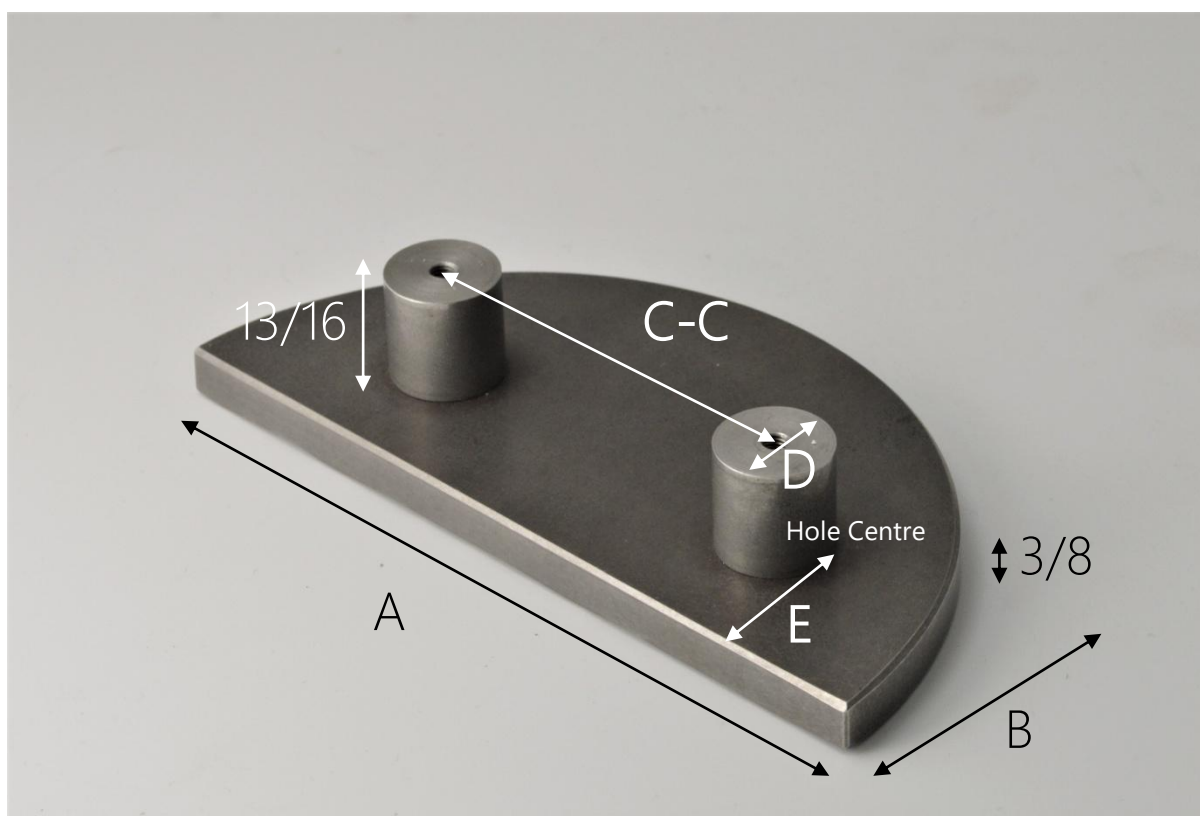


Semi Circular Handle



These handles are made to metric dimensions; these are the nearest APPROXIMATE imperial equivalent

Stock code	A inch	B inch	C-C inch	D inch	E Inch	Weight g
SC150	5 15/16	2 15/16	2 15/16	13/16	1	950
SC175	6 7/8	3 7/16	3 7/16	1	1 3/16	1250
SC200	7 7/8	3 15/16	3 15/16	1	1 3/8	1575
SC225	8 7/8	4 7/16	4 7/16	1	1 9/16	1930
SC250	9 13/16	4 15/16	4 15/16	1 3/16	1 3/4	2250
SC275	10 13/16	5 7/16	5 7/16	1 3/16	2	2670
SC300	11 13/16	5 15/16	5 15/16	1 3/16	2 3/16	3140