



VITREOUS CHINA

TOILET  
**DF-21-302**

LAVATORIES

TOILETS

BIDETS / URINALS

CAST IRON



# ULTRA DUAL-FLUSH™ Pressure-Assist Toilet Round Front

12" Rough-in

### Features:

- Low Consumption Dual-Flush (1.1/1.6 gpf) (4.0/6.0 Lpf)
- Round Front Bowl
- Pressurized Flushing Action
- Close Coupled Flushometer Tank
- Siphon Jet
- Front Tank Lever
- 2 Bolt Caps

### Dimensions:

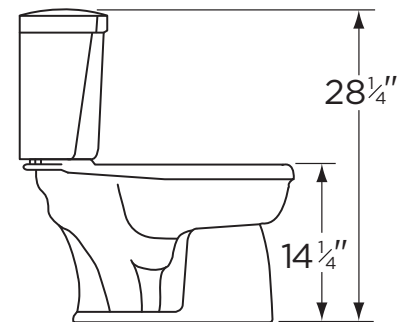
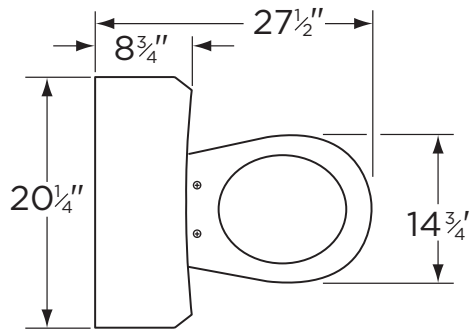
Height ..... 28 1/4"  
 Width ..... 20 1/4"  
 Depth ..... 27 1/2"  
 Rough-in ..... 12"  
 Water Surface from Rim ..... 4 5/8"  
 Trapway (ave)\* ..... 3 1/8"  
 Trapway (min) ..... 2"  
 Water Surface ..... 12" x 10"  
 Water Seal ..... 2 1/2"  
 Shipping Weight ..... 88 lbs

\*Average diameter of 26 equally spaced points throughout the trapway of 3 randomly selected bowls



**Specifications:** Bowl—#21-342 Round Front  
Seat not included

Tank—#DF-28-380



THIS FIXTURE QUALIFIES ACCORDING TO ASME TEST PROCEDURES AS A WATER CLOSET WITH AN AVERAGE CONSUMPTION OF 1.6 gpf (6 Lpf) OR LESS.



Job Name	
Date	
Model Specified	
Quantity	
Customer	
Contractor	
Architect/engineer	

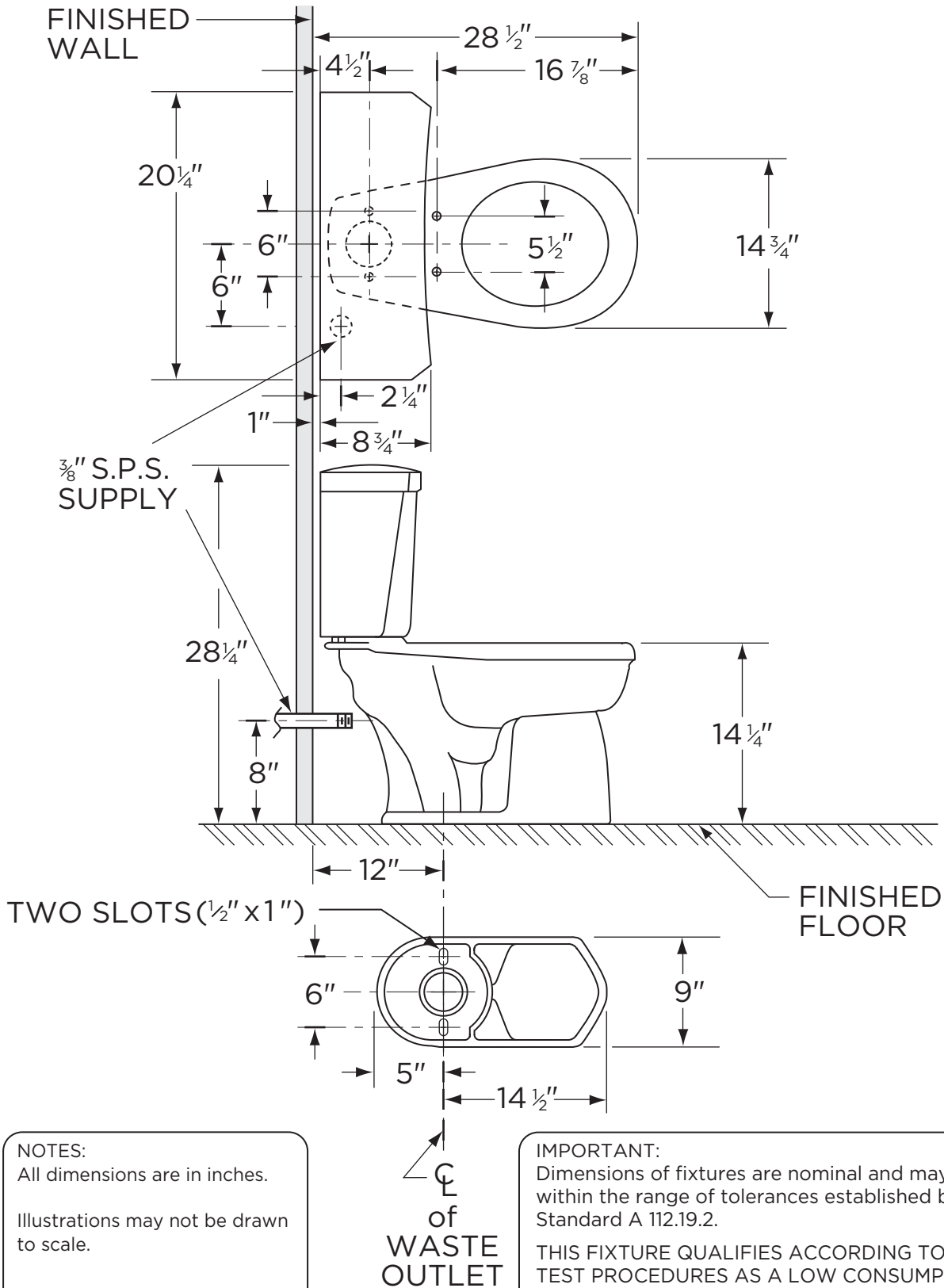
www.gerberonline.com



1.1/1.6 gpf (4.0/6.0 Lpf) LOW  
CONSUMPTION ULTRA DUAL-FLUSH™ TOILET

DF-21-302

Round Front, 12" Rough-in  
(Bowl 21-342 with Tank DF-28-380)



**NOTES:**  
All dimensions are in inches.  
Illustrations may not be drawn to scale.

**IMPORTANT:**  
Dimensions of fixtures are nominal and may vary within the range of tolerances established by ASME Standard A 112.19.2.  
THIS FIXTURE QUALIFIES ACCORDING TO ASME TEST PROCEDURES AS A LOW CONSUMPTION WATER CLOSET WITH AN AVERAGE CONSUMPTION OF 1.6 gpf (6 Lpf) OR LESS.