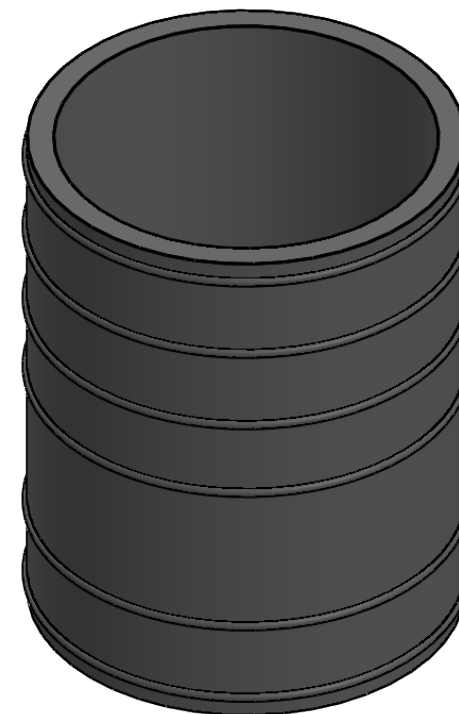
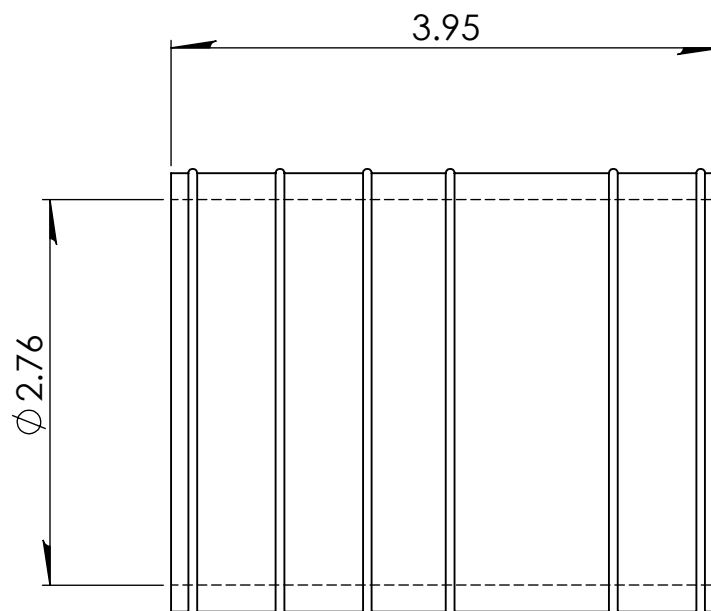




DESCRIPTION:	CONNECTS 2 IN. PLASTIC SOCKET TO 2 IN. PLASTIC SOCKET
--------------	--



PROPRIETARY AND CONFIDENTIAL  
THE INFORMATION CONTAINED IN THIS  
DRAWING IS THE SOLE PROPERTY OF  
FERNCO, INC. ANY REPRODUCTION IN  
PART OR AS A WHOLE WITHOUT THE  
WRITTEN PERMISSION OF FERNCO, INC.  
IS PROHIBITED.

TOLERANCES:  
FRACTIONAL  $\pm 1/4"$   
.XX =  $\pm .06$   
ANG. =  $\pm 3^\circ$   
UNLESS OTHERWISE SPECIFIED

MATERIAL	PVC	CLAMPS USED	300 SERIES STAINLESS	UNITS:	SIZE:	AUTHOR:	SCALE:	
PART WEIGHT		INSTALLATION TORQUE	60 IN · LBS	INCHES	A	ELI MILLER	NOT TO SCALE	
BOX QUANTITY		MIN/MAX TEMP.	-30/140 °F	3RD ANGLE PROJECTION		CHECKER:	DATE:	SHEET
PRESSURE TESTED		ASTM	C1173 / D5926	DO NOT SCALE DRAWING			11/1/2018	1 OF 1