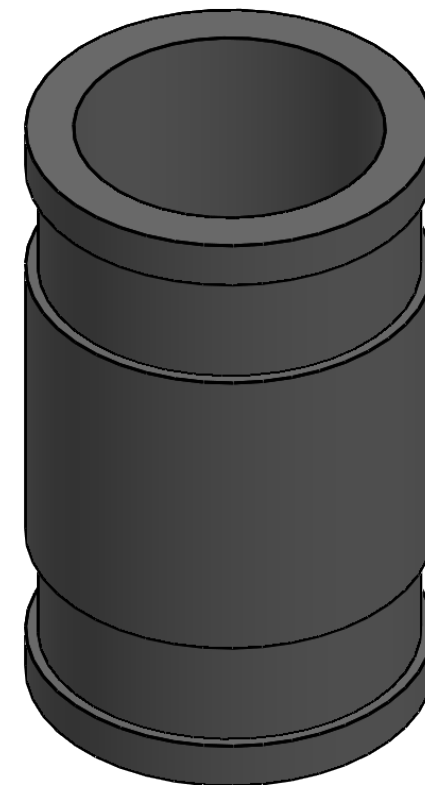
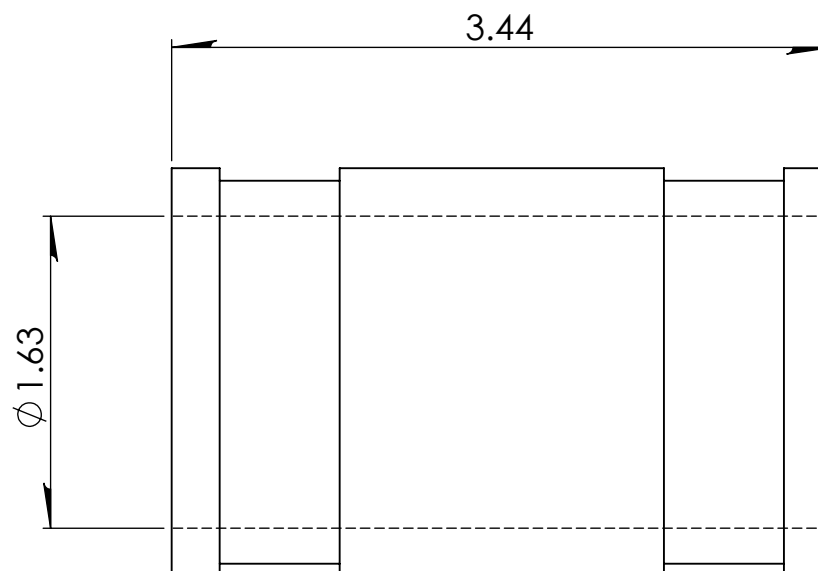
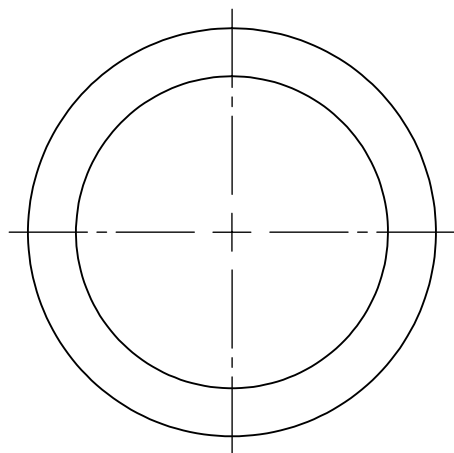




DESCRIPTION:	CONNECT 1 1/4 IN. CI/PL TO 1 1/4 IN. CI/PL
--------------	--



PROPRIETARY AND CONFIDENTIAL THE INFORMATION CONTAINED IN THIS DRAWING IS THE SOLE PROPERTY OF FERNCO, INC. ANY REPRODUCTION IN PART OR AS A WHOLE WITHOUT THE WRITTEN PERMISSION OF FERNCO, INC. IS PROHIBITED.	TOLERANCES: FRACTIONAL $\pm 1/4"$.XX = $\pm .06$ ANG. = $\pm 3^\circ$ UNLESS OTHERWISE SPECIFIED
--	---

MATERIAL	PVC	CLAMPS USED	300 SERIES STAINLESS	UNITS:	SIZE:	AUTHOR:	SCALE:	
PART WEIGHT		INSTALLATION TORQUE	60 IN · LBS	INCHES	A	ELI MILLER	NOT TO SCALE	
BOX QUANTITY		MIN/MAX TEMP.	-30/140 °F	3RD ANGLE PROJECTION		CHECKER:	DATE:	SHEET
PRESSURE TESTED		ASTM	C1173 / D5926	DO NOT SCALE DRAWING			10/15/2018	1 OF 1