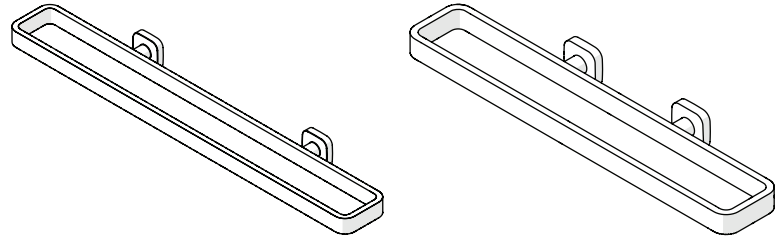


Guide d'installation et d'utilisation • Installation and User's Guide

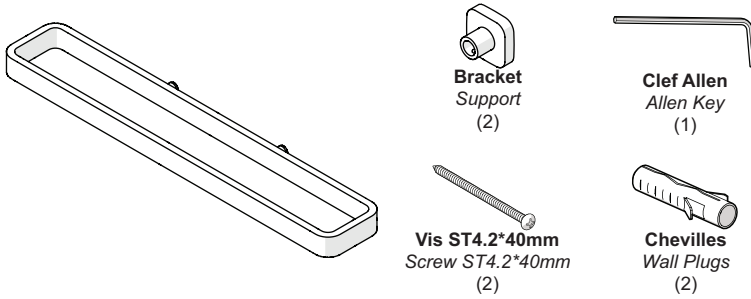
Barre à Serviette • Towel Bar

Lire toutes les instructions attentivement avant de commencer l'installation. Le bon respect des instructions garantit une installation sûre. Nettoyer régulièrement la surface pour qu'elle reste brillante. Utiliser seulement un nettoyant neutre et un tissu doux. Ne pas utiliser de nettoyant chimique ou d'éponge abrasive.

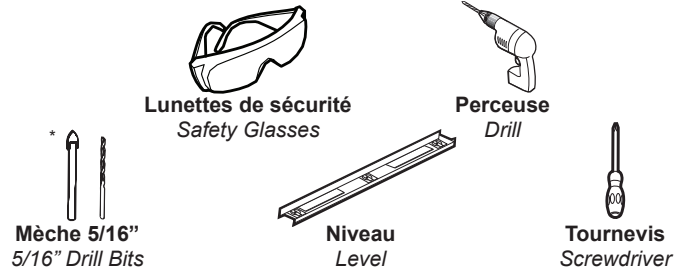
Read all instructions carefully before proceeding. Following the instructions closely will ensure a safe and secure installation. Clean the surface periodically to maintain a bright surface. Use only a mild-cleaner and soft cloth. Do not use chemicals or scouring pads.



LISTE DES PIÈCES / PARTS LISTING

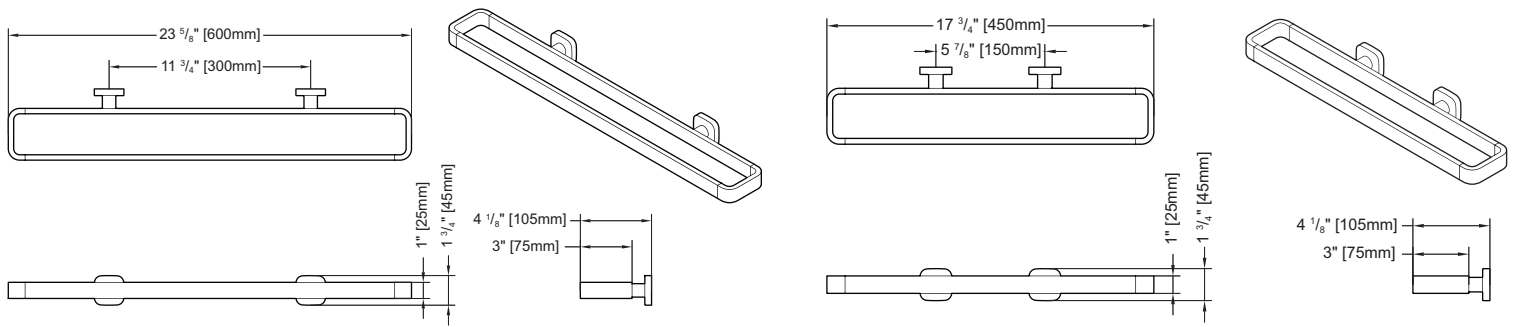


OUTILS REQUIS / REQUIRED TOOLS

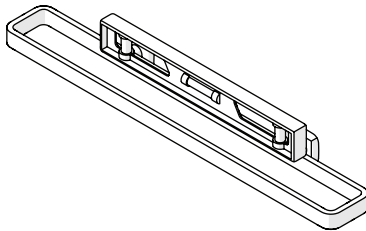


* Use a 5/16" drill bit when drilling into ceramic tiles.
* Utiliser une mèche de 5/16" pour percer des tuiles en céramique.

CARACTÉRISTIQUES / SPECIFICATIONS

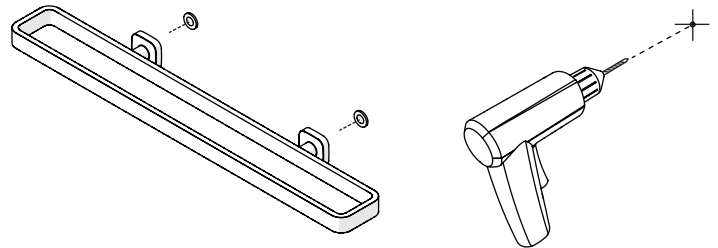


INSTALLATION / INSTALLATION



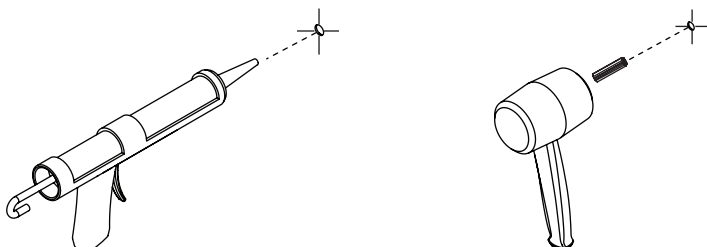
Niveler et pousser la barre fermement contre le mur /
Level the bar and push firmly against the wall

INSTALLATION / INSTALLATION



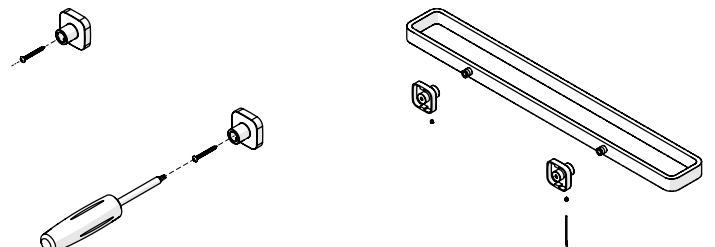
Retirer la barre et percer à travers les collants /
Remove the bar from the wall and drill through the stickers

INSTALLATION / INSTALLATION



Siliconer et insérer les chevilles /
Silicone and insert the wall plugs

INSTALLATION / INSTALLATION



Installer les supports et la barre /
Install the brackets and the bar