

PRODUCT SPECIFICATIONS

Elkay Stainless Steel 10" x 3-5/8" x 16-1/2" Dialysis Box. Sink is manufactured from Stainless Steel with a Lustrous Highlighted Satin finish.

Material:	Stainless Steel
Finish:	Lustrous Highlighted Satin
Weight Without Packaging:	12
Sink Dimensions:	10" x 3-5/8" x 16-1/2"
Mounting Hardware:	No

Custom Options	
Alternate Punching	
<input type="checkbox"/> Faucet Model:	<input type="checkbox"/> Punch Required:

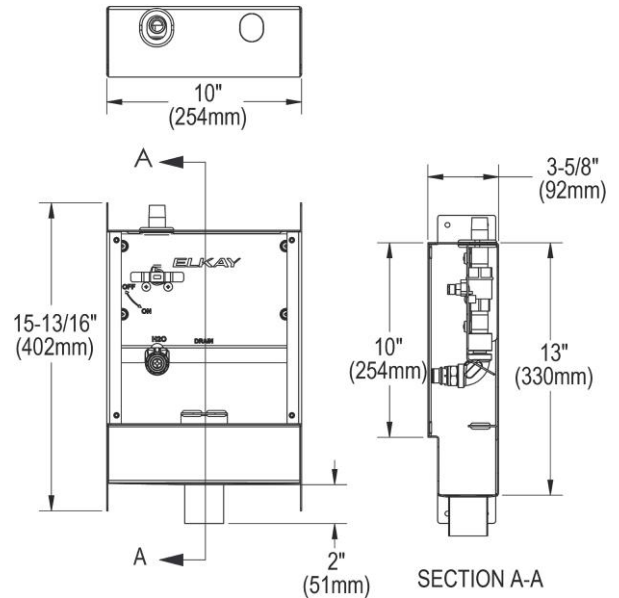
*Options available if applicable



AMERICAN PRIDE. A LIFETIME TRADITION.
Like your family, the Elkay family has values and traditions that endure. For almost a century, Elkay has been a family-owned and operated company, providing thousands of jobs that support our families and communities.



[Clean and Care Manual \(PDF\)](#)



PART: _____ QTY: _____

PROJECT: _____

CONTACT: _____

DATE: _____

NOTES: _____

APPROVAL: _____

In keeping with our policy of continuing product improvement, Elkay reserves the right to change product specifications without notice. Please visit elkay.com for the most current version of Elkay product specification sheets. This specification describes an Elkay product with design, quality, and functional benefits to the user. When making a comparison of other producers' offerings, be certain these features are not overlooked.