

ELKAY[®]

INSTALLATION, CARE & USE MANUAL

EWTLA Bi-Level Deluxe Wall Mount Coolers



Note: Danger! Electric shock hazard. Disconnect power before servicing unit.

Uses HFC-134A refrigerant

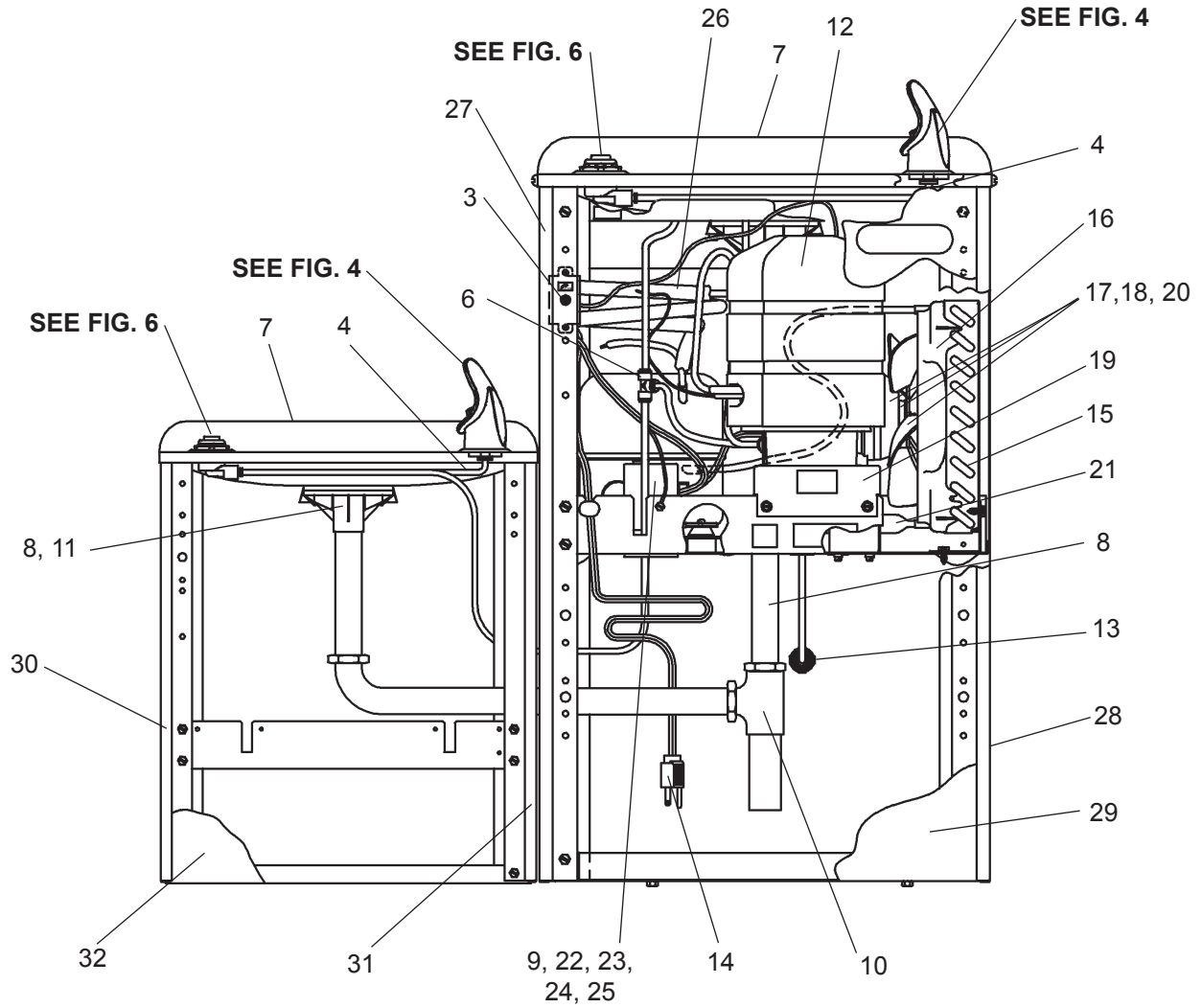


FIG. 1

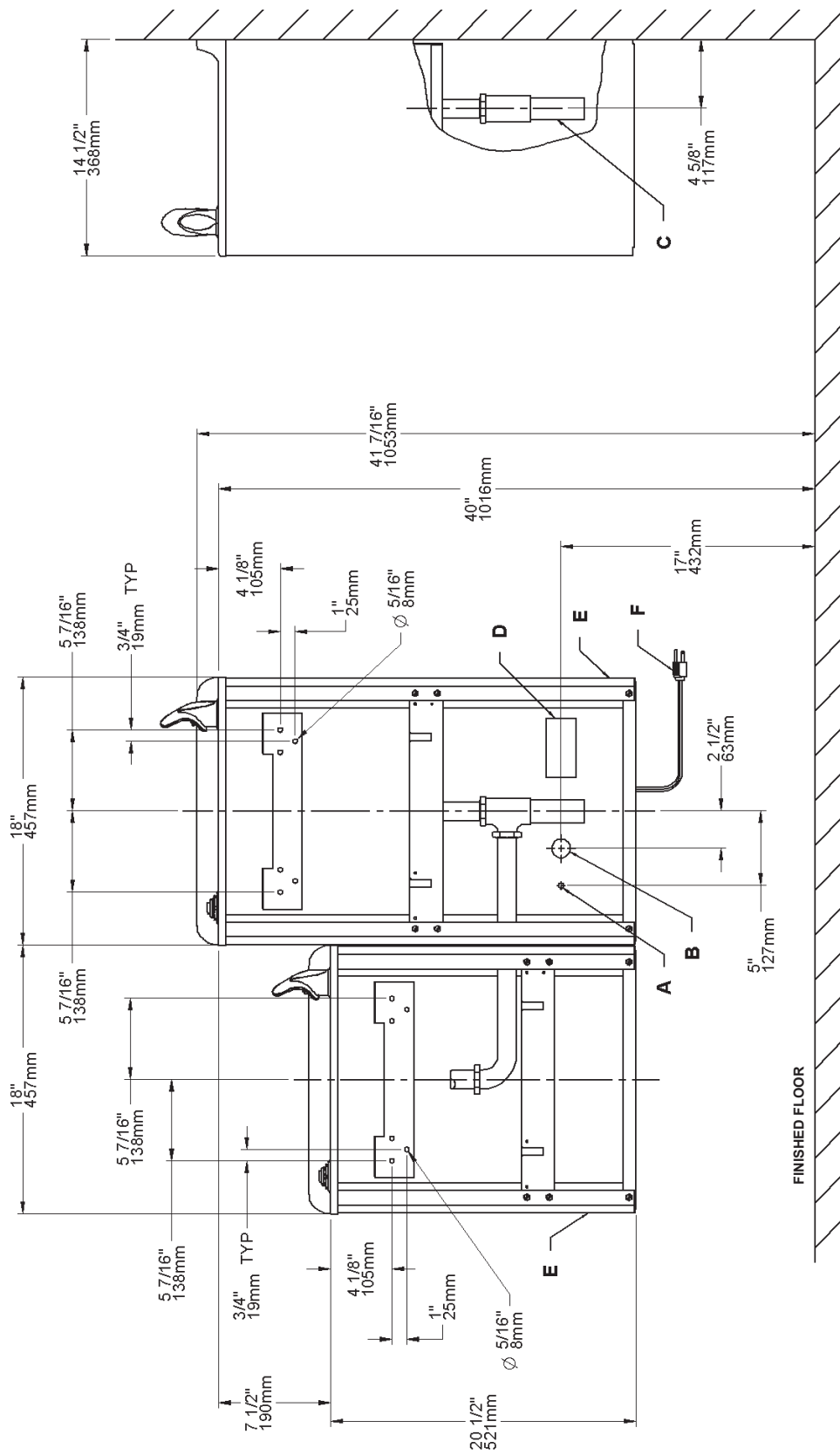


FIG. 2

LEGEND/LEYENDA/LÉGENDE
 A = RECOMMENDED WATER SUPPLY LOCATION 3/8" O.D. UNPLATED COPPER TUBE CONNECT STUB OUT 1-1/2 IN. (38mm) FROM WALL SHUT OFF BY OTHERS
 B = RECOMMENDED LOCATION FOR WASTE OUTLET 1-1/4" O.D. DRAIN
 C = 1-1/4" TRAP NOT FURNISHED
 D = ELECTRICAL OUTLET LOCATION
 E = INSURE PROPER VENTILATION BY MAINTAINING 4" (102mm) (MIN.) CLEARANCE FROM CABINET LOUVERS TO WALL
 F = POWER CORD 4 FEET (1219mm) LONG

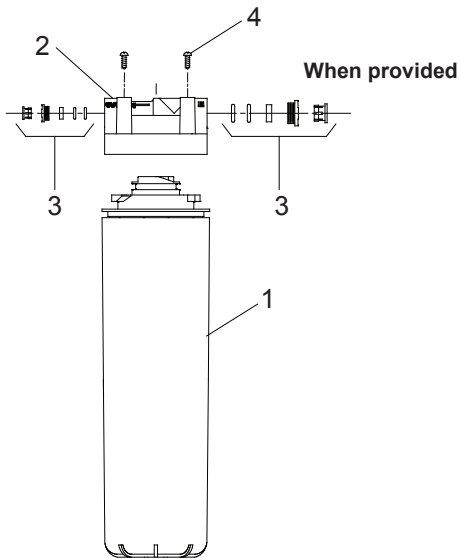


FIG. 3

WATERSENTRY® FILTER PARTS LIST (See Fig. 6)		
ITEM NO.	PART NO.	DESCRIPTION
1	51299C	Filter Assy - 1500 Gallons
2	51294C	Filter Head Assy
3	98926C	Kit-Filter Head Fitting Includes John Guest Fittings
4	70792C	Screws - #8-18 X .75 SS PHHL

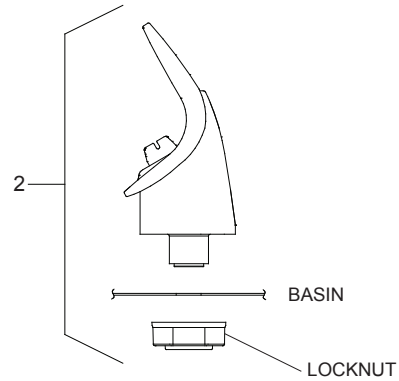


FIG. 4

NOTE:
 WHEN INSTALLING REPLACEMENT BUBBLER AND PEDESTAL, TIGHTEN LOCKNUT (ITEM ONLY TO HOLD PARTS SNUG IN POSITION. DO NOT OVER TIGHTEN.

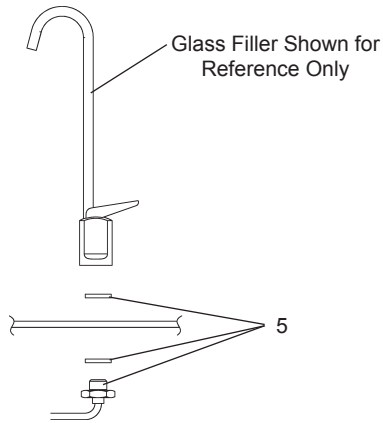


FIG. 5

Stream height is factory set at 35 PSI. If supply pressure varies greatly from this, remove items Cover Nut & Button and adjust screw on regulator. Clockwise adjustment will raise stream and counter-clockwise adjustment will lower stream. For best adjustment, stream should hit basin approximately 6-1/2" (165mm) from bubbler.

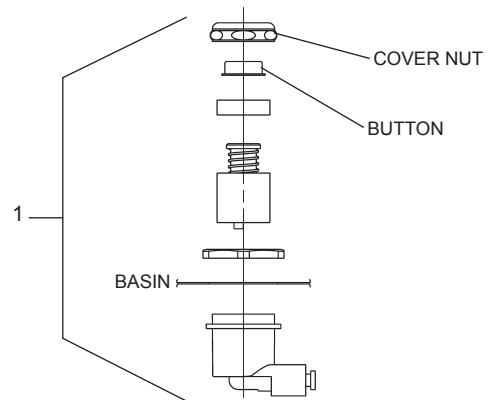


FIG. 6

PARTS LIST 115V

220V/50Hz

ITEM NO.	PART NO.	DESCRIPTION
1	98536C	Kit - Push Button/Regulator/Holder/Nuts/
2	56073C	Bubbler Assy
3	98773C	Kit - Cold Control/Screws
4	56092C	Poly. Tubing (Cut to Length)
5	1000001792	Kit - Bubbler Nipple/Gaskets (GF)
6	1000001994	Kit - Tee 1/4" (3 Pack)
7	20776C	Basin
	20713C	Basin (GF Only)
8	45702C	Tailpipe Assy (8 GPH)
	45693C	Kit - Precooler/Receptor/Gasket (14-16 GPH)
9	35844C	Capacitor (14 & 20 GPH)
10	1000002055	Drain Assy Universal Bi-Level
11	40088C	Assy - Tailpipe
12	98724C	Evaporator Assy (8 GPH)
	98771C	Evaporator Assy (14, 16 & 20 GPH)
13	55996C	Strainer
14	36208C	Power Cord (8 & 16 GPH)
	35888C	Power Cord (14 GPH)
15	98776C	Kit - Condenser/Drier (8 GPH)
	66432C	Condenser (14 & 20 GPH)
	61468C	Kit - Condenser/Shrd/F.Blade/Scrws(16 GPH)
16	56237C	Fan Shroud (8 GPH)
	21516C	Fan Shroud (14, 16 & 20 GPH)
17	98775C	Kit - Fan Mtr/Shrd/Blade/Nut/Screws(8 GPH)
	31492C	Fan Motor (14 & 20 GPH)
	31491C	Fan Motor (16 GPH)
18	30664C	Fan Blade
19	27681C	Fan Bracket
20	70018C	Fan Blade Nut
21	66703C	Drier (8 GPH)
	66203C	Drier (14, 16 & 20 GPH)
*22	36322C	Compressor Serv. Pak (8 GPH)
	36312C	Compressor Serv. Pak (14 & 20 GPH)
	36316C	Compressor Serv. Pak (16 GPH)
23	98535C	Kit - Elect/Relay/Overload/Cover (8 GPH)
	35840C	Overload (14 & 20 GPH)
	36222C	Overload (16 GPH)
24	35768C	Relay Cover
25	35843C	Relay (14 & 20 GPH)
	36221C	Relay (16 GPH)
26	55996C	Strainer
27	98778C	Kit - Heat Exchanger/Drier (8 GPH)
	98848C	Kit - Heat Exchanger/Drier (14 & 20 GPH)
	98844C	Kit - Heat Exchanger/Drier (16 GPH)
28	See Color Table	Panel-Left Side (Right Unit)
29	See Color Table	Panel-Right Side (Right Unit)
30	See Color Table	Panel-Front (Right Unit)
31	See Color Table	Panel-Left Side (Left Unit)
32	See Color Table	Panel-Right Side (Left Unit)
33	See Color Table	Panel-Front (Left Unit)
NS	1000001602	Kit - Elbow - 5/16" x 1/4" (3 Pack)
NS	22601C	Bottom Cover

ITEM NO.	PART. NO.	DESCRIPTION
14	36024C	Power Cord (14 GPH)
15	66417C	Condenser (14 GPH)
17	31430C	Fan Motor (14 GPH)
21	66202C	Drier (14 GPH)
*22	35764C	Compressor Serv. Pak (14 GPH)
23	36177C	Overload (14 GPH)
23	36178C	Relay (14 GPH)
24	36224C	Relay Cover (14 GPH)
27	98840C	Kit - Heat Exchanger/Drier (14 GPH)
29	98724C	Evaporator Assy (14 GPH)
NS	35826C	Power Inlet (14 GPH)

230V/60Hz

ITEM NO.	PART. NO.	DESCRIPTION
14	36024C	Power Cord (14 & 16 GPH)
15	66432C	Condenser (16 GPH)
17	31431C	Fan Motor (14 & 16 GPH)
*22	35856C	Compressor Serv. Pak (14 & 16 GPH)
23	35953C	Overload (14 & 16 GPH)
25	35954C	Relay (14 & 16 GPH)
27	98848C	Kit - Heat Exchanger/Drier (16 GPH)
NS	35955C	Capacitor (14 & 16 GPH)
NS	35826C	Power Inlet (14 & 16 GPH)

COLOR TABLE

PANEL COLOR	Item No. 28 Part No.	Item No. 29 Part No.	Item No. 30 Part No.
Gray Beige	20732C	20639C	20675C
Almond	21477C	21465C	20676C
Stainless Stl	20733C	20641C	20672C
Sandalwood	21476C	21463C	21454C
Granite	27186C	27174C	27150C
Light Gray	27187C	27175C	27154C

COLOR TABLE

PANEL COLOR	Item No. 31 Part No.	Item No. 32 Part No.	Item No. 33 Part No.
Gray Beige	20646C	20736C	20684C
Almond	21468C	21479C	20685C
Stainless Stl	20648C	20737C	20681C
Sandalwood	21466C	21478C	21456C
Granite	27177C	27189C	27153C
Light Gray	27178C	27190C	21455C

*INCLUDES RELAY & OVERLOAD. IF UNDER WARRANTY, REPLACE WITH SAME COMPRESSOR USED IN ORIGINAL ASSEMBLY.

NOTE: All correspondence pertaining to any of the above water coolers or orders for repair parts MUST include Model No. and Serial No. of cooler, name and part number of replacement part.