



AMERICAN STANDARD

REM™ PRESSURE BALANCE SHOWER TRIM



- European minimalist design
- Cast brass valve
- Ceramic disc valve cartridge
- Adjustable hot limit safety stop
- Pressure balance cartridge maintains constant output temperature in response to changes in relative hot and cold supply pressures
- Concealed mounting hardware
- Maximum Showerhead Flow Rate: 2.0 GPM (7.6L/min)

CODES AND STANDARDS

Meets or Exceeds ASME A112.18.1/CSA B125.1/ASSE 1016

AVAILABLE FINISHES

Polished Chrome
Brushed Nickel

FINISH CODE

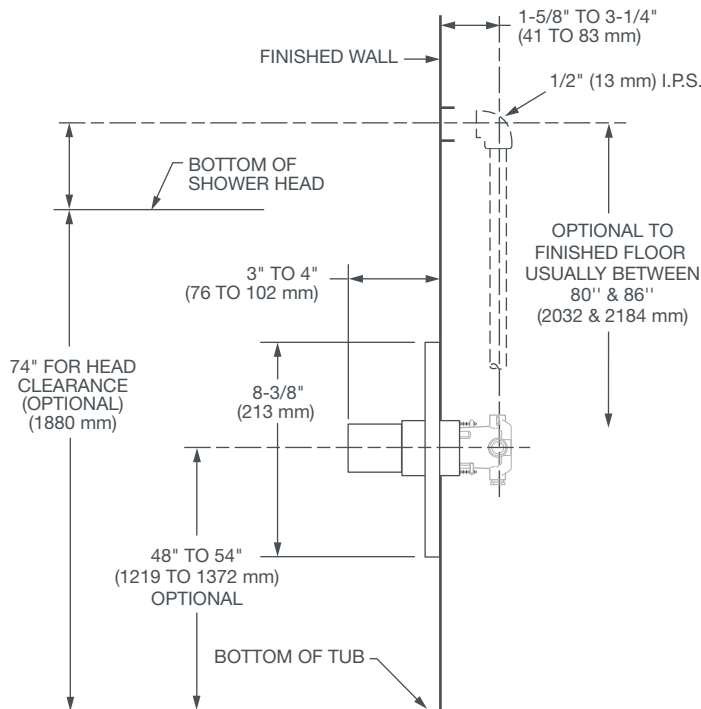
100
144

DESCRIPTION

Pressure Balance
Shower Trim
Showerhead
Rough Only

PRODUCT NUMBER

D35100500.XXX
D35100775.XXX
D35000500.191



IMPORTANT: These measurements are subject to change or cancellation. No responsibility is assumed for use of superseded or voided pages.



Meets the Americans with Disabilities Act Guidelines and ANSI A117.1 Requirements for the physically challenged.