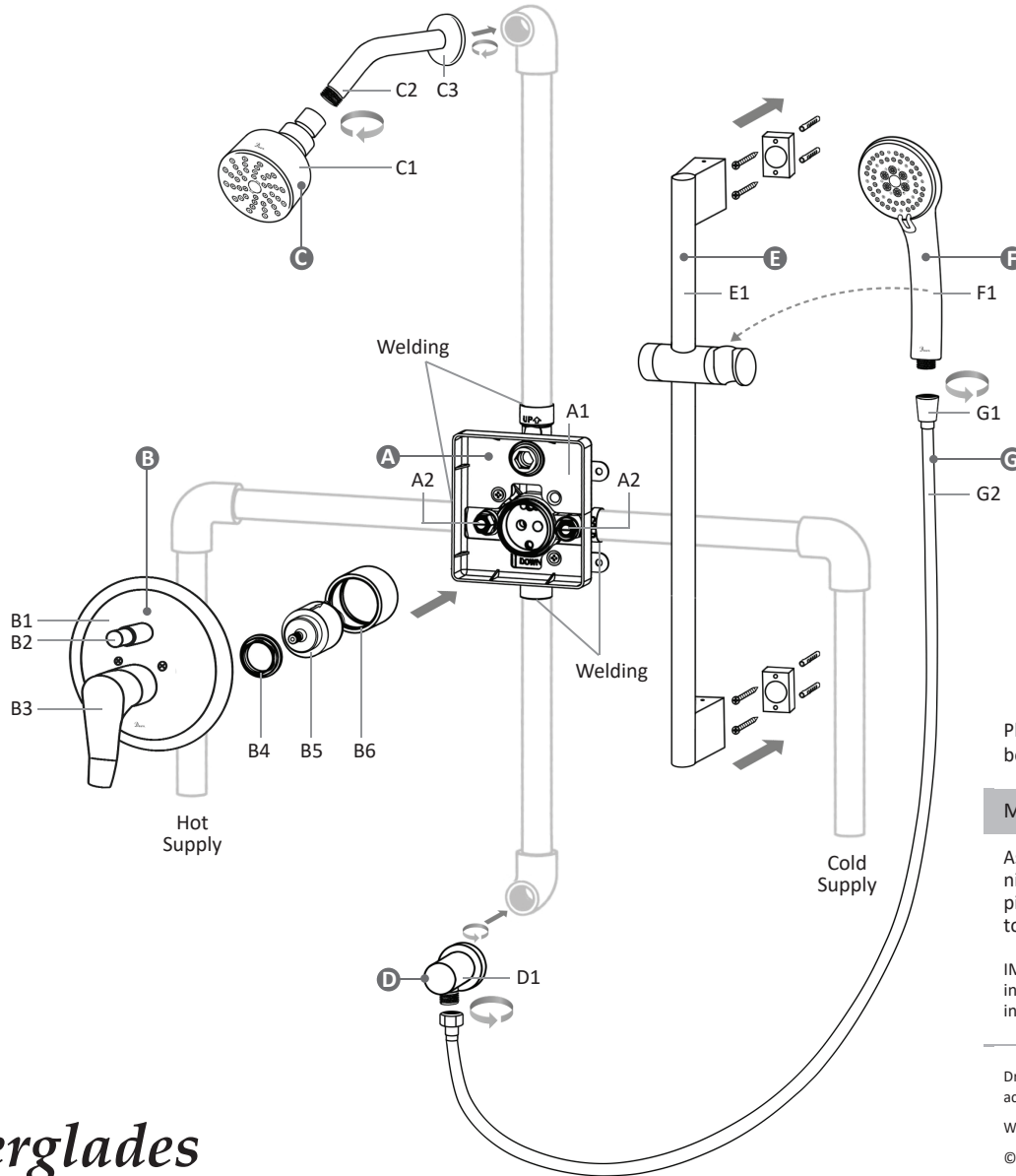


Quick Installation Instructions Model: Everglades Shower Set DSSES01C (Chrome) • DSSES04BN (Brushed Nickel)



Please read all the instructions carefully before starting the installation.

Material & Tools:

Assorted screwdrivers, adjustable wrenches, nipple connector, safety glasses, pencil, pipe plugs, level, sealant tape, and other tools as needed.

IMPORTANT: Recommended for professional installers only. The installer is responsible for installing the product safely.

Drawings are for reference only. Please refer to the actual product for exact size, shape and parts.

We reserve the right to make any changes and corrections.

© 2017 Dawn Kitchen & Bath Products, Inc.

Everglades

Shower Set Includes:

- | | | | | | | |
|--|---|--|---|--|--|--|
| <p>A
D1267300
Diverter Valve *
A1. Main Body & Plastic Guard (remove plastic guard after water flush)
A2. Fixing Nuts
— Screws
— Socket Spanner</p> | <p>B
D0042601 (C/BN)
Diverter Trim *
B1. Cover Plate
B2. Diverter Button (switches between showerhead or handshower)
B3. Handle
B4. Cartridge Nut
B5. Cartridge
B6. Cartridge Cover
— Screws</p> | <p>C
SH0150100 (C)
SH0150400 (BN)
Showerhead
C1. Main Body
— Filter
— Restrictor
SRT010100 (C)
SRT010400 (BN)
6" Arm & Flange
C2. 6" Arm
C3. Flange</p> | <p>D
WCTR50100 (C)
WCTR50400 (BN)
Elbow
D1. Main Body
• Nipple Connector (not included) is required to connect between elbow and water pipe</p> | <p>E
R40020100 (C)
R40020400 (BN)
27" Slide Bar
E1. Main Body
— Screws
— Screw Anchors
— Wall Brackets
— Alley Key</p> | <p>F
HS0690102 (C)
HS0690402 (BN)
Handshower
F1. Main Body
— Filter
— Restrictor</p> | <p>G
HF0400160 (C)
HF0400460 (BN)
PVC Hose
G1. Connectors (both ends)
G2. Hose</p> |
|--|---|--|---|--|--|--|

* Please refer to the "Installation Instructions - Pressure Balancing Shower and Bath Valve/Trim" (included in this package) for complete step by step instructions regarding Valve/Trim installation.