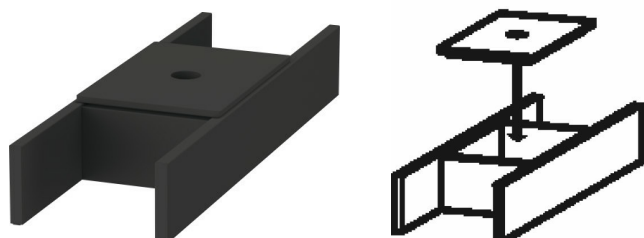


**Accessories Dividing system # UV984600000**

|&lt; 115 mm &gt;|



Dividing system	Dimension	Weight	Order number
Individual and retrofittable dividing system with cover, Black diamond, for vanity unit for console and low cabinet for console			
<b>Colors</b>			
M00			
<b>Variant</b>			
	115 x 370 mm		UV984600000
<b>Suitable products</b>			
Vanity unit for console compact 1 pull-out compartment, 600 x 478 mm	600 x 478 mm		DS5300
Vanity unit for console compact 1 pull-out compartment, 700 x 478 mm	700 x 478 mm		DS5301
Vanity unit for console compact 1 pull-out compartment, 800 x 478 mm	800 x 478 mm		DS5302
Vanity unit for console compact 1 pull-out compartment, 900 x 478 mm	900 x 478 mm		DS5303
Vanity unit for console compact 1 pull-out compartment, 1000 x 478 mm	1000 x 478 mm		DS5304
Vanity unit for console compact 2 drawers, upper drawer including cut-out for siphon and siphon cover, 600 x 478 mm	600 x 478 mm		DS5305
Vanity unit for console compact 2 drawers, upper drawer including cut-out for siphon and siphon cover, 700 x 478 mm	700 x 478 mm		DS5306
Vanity unit for console compact 2 drawers, upper drawer including cut-out for siphon and siphon cover, 800 x 478 mm	800 x 478 mm		DS5307
Vanity unit for console compact 2 drawers, upper drawer including cut-out for siphon and siphon cover, 900 x 478 mm	900 x 478 mm		DS5308
Vanity unit for console compact 2 drawers, upper drawer including cut-out for siphon and siphon cover, 1000 x 478 mm	1000 x 478 mm		DS5309
Vanity unit for console 1 pull-out compartment, 600 x 548 mm	600 x 548 mm		DS5310
Vanity unit for console 1 pull-out compartment, 700 x 548 mm	700 x 548 mm		DS5311
Vanity unit for console 1 pull-out compartment, 800 x 548 mm	800 x 548 mm		DS5312

**Accessories Dividing system # UV984600000**

|&lt; 115 mm &gt;|

Vanity unit for console 1 pull-out compartment, 900 x 548 mm	900 x 548 mm	DS5313
Vanity unit for console 1 pull-out compartment, 1000 x 548 mm	1000 x 548 mm	DS5314
Vanity unit for console 2 drawers, upper drawer including cut-out for siphon and siphon cover, 600 x 548 mm	600 x 548 mm	DS5315
Vanity unit for console 2 drawers, upper drawer including cut-out for siphon and siphon cover, 700 x 548 mm	700 x 548 mm	DS5316
Vanity unit for console 2 drawers, upper drawer including cut-out for siphon and siphon cover, 800 x 548 mm	800 x 548 mm	DS5317
Vanity unit for console 2 drawers, upper drawer including cut-out for siphon and siphon cover, 900 x 548 mm	900 x 548 mm	DS5318
Vanity unit for console 2 drawers, upper drawer including cut-out for siphon and siphon cover, 1000 x 548 mm	1000 x 548 mm	DS5319
Low cabinet for console 1 pull-out compartment, 300 x 548 mm	300 x 548 mm	DS5330
Low cabinet for console 1 pull-out compartment, 400 x 548 mm	400 x 548 mm	DS5331
Low cabinet for console 1 pull-out compartment, 500 x 548 mm	500 x 548 mm	DS5332
Low cabinet for console 1 pull-out compartment, 600 x 548 mm	600 x 548 mm	DS5333
Low cabinet for console 1 pull-out compartment, 800 x 548 mm	800 x 548 mm	DS5334
Low cabinet for console 2 drawers, 300 x 548 mm	300 x 548 mm	DS5335
Low cabinet for console 2 drawers, 400 x 548 mm	400 x 548 mm	DS5336
Low cabinet for console 2 drawers, 500 x 548 mm	500 x 548 mm	DS5337
Low cabinet for console 2 drawers, 600 x 548 mm	600 x 548 mm	DS5338
Low cabinet for console 2 drawers, 800 x 548 mm	800 x 548 mm	DS5339
Low cabinet for console compact 1 pull-out compartment, 300 x 478 mm	300 x 478 mm	DS5320
Low cabinet for console compact 1 pull-out compartment, 400 x 478 mm	400 x 478 mm	DS5321
Low cabinet for console compact 1 pull-out compartment, 500 x 478 mm	500 x 478 mm	DS5322
Low cabinet for console compact 1 pull-out compartment, 600 x 478 mm	600 x 478 mm	DS5323
Low cabinet for console compact 1 pull-out compartment, 800 x 478 mm	800 x 478 mm	DS5324
Low cabinet for console compact 2 drawers, 300 x 478 mm	300 x 478 mm	DS5325
Low cabinet for console compact 2 drawers, 400 x 478 mm	400 x 478 mm	DS5326
Low cabinet for console compact 2 drawers, 500 x 478 mm	500 x 478 mm	DS5327
Low cabinet for console compact 2 drawers, 600 x 478 mm	600 x 478 mm	DS5328
Low cabinet for console compact 2 drawers, 800 x 478 mm	800 x 478 mm	DS5329
Vanity unit floor-standing 2 pull-out compartments, upper pull-out compartment including cut-out for siphon and siphon cover, for ME by Starck # 233663, 620 x 479 mm	620 x 479 mm	BR4401

**Accessories Dividing system # UV984600000**

|&lt; 115 mm &gt;|

Vanity unit floor-standing 2 pull-out compartments, upper pull-out compartment including cut-out for siphon and siphon cover, for ME by Starck # 233683, 820 x 479 mm	820 x 479 mm	BR4402
Vanity unit floor-standing 2 pull-out compartments, upper pull-out compartment including cut-out for siphon and siphon cover, for ME by Starck # 233610, 1020 x 479 mm	1020 x 479 mm	BR4403
Vanity unit floor-standing 2 pull-out compartments, upper pull-out compartment including cut-out for siphon and siphon cover, for ME by Starck # 233612, 236112, 1220 x 479 mm	1220 x 479 mm	BR4404
Vanity unit for console compact 1 pull-out compartment, 620 x 480 mm	620 x 480 mm	BR5100
Vanity unit for console compact 1 pull-out compartment, 720 x 480 mm	720 x 480 mm	BR5101
Vanity unit for console compact 1 pull-out compartment, 820 x 480 mm	820 x 480 mm	BR5102
Vanity unit for console compact 1 pull-out compartment, 920 x 480 mm	920 x 480 mm	BR5103
Vanity unit for console compact 1 pull-out compartment, 1020 x 480 mm	1020 x 480 mm	BR5104
Vanity unit for console compact 2 drawers, upper drawer including cut-out for siphon and siphon cover, 620 x 480 mm	620 x 480 mm	BR5105
Vanity unit for console compact 2 drawers, upper drawer including cut-out for siphon and siphon cover, 720 x 480 mm	720 x 480 mm	BR5106
Vanity unit for console compact 2 drawers, upper drawer including cut-out for siphon and siphon cover, 820 x 480 mm	820 x 480 mm	BR5107
Vanity unit for console compact 2 drawers, upper drawer including cut-out for siphon and siphon cover, 920 x 480 mm	920 x 480 mm	BR5108
Vanity unit for console compact 2 drawers, upper drawer including cut-out for siphon and siphon cover, 1020 x 480 mm	1020 x 480 mm	BR5109
Vanity unit for console 1 pull-out compartment, 620 x 550 mm	620 x 550 mm	BR5110
Vanity unit for console 1 pull-out compartment, 720 x 550 mm	720 x 550 mm	BR5111
Vanity unit for console 1 pull-out compartment, 820 x 550 mm	820 x 550 mm	BR5112
Vanity unit for console 1 pull-out compartment, 920 x 550 mm	920 x 550 mm	BR5113
Vanity unit for console 1 pull-out compartment, 1020 x 550 mm	1020 x 550 mm	BR5114
Vanity unit for console 2 drawers, upper drawer including cut-out for siphon and siphon cover, 620 x 550 mm	620 x 550 mm	BR5115
Vanity unit for console 2 drawers, upper drawer including cut-out for siphon and siphon cover, 720 x 550 mm	720 x 550 mm	BR5116
Vanity unit for console 2 drawers, upper drawer including cut-out for siphon and siphon cover, 820 x 550 mm	820 x 550 mm	BR5117
Vanity unit for console 2 drawers, upper drawer including cut-out for siphon and siphon cover, 920 x 550 mm	920 x 550 mm	BR5118
Vanity unit for console 2 drawers, upper drawer including cut-out for siphon and siphon cover, 1020 x 550 mm	1020 x 550 mm	BR5119
Low cabinet for console compact 1 pull-out compartment, 320 x 480 mm	320 x 480 mm	BR5120

**Accessories Dividing system # UV984600000**

|&lt; 115 mm &gt;|

Low cabinet for console compact 1 pull-out compartment, 420 x 480 mm	420 x 480 mm	BR5121
Low cabinet for console compact 1 pull-out compartment, 520 x 480 mm	520 x 480 mm	BR5122
Low cabinet for console compact 1 pull-out compartment, 620 x 480 mm	620 x 480 mm	BR5123
Low cabinet for console compact 1 pull-out compartment, 820 x 480 mm	820 x 480 mm	BR5124
Low cabinet for console compact 2 drawers, 320 x 480 mm	320 x 480 mm	BR5125
Low cabinet for console compact 2 drawers, 420 x 480 mm	420 x 480 mm	BR5126
Low cabinet for console compact 2 drawers, 520 x 480 mm	520 x 480 mm	BR5127
Low cabinet for console compact 2 drawers, 620 x 480 mm	620 x 480 mm	BR5128
Low cabinet for console compact 2 drawers, 820 x 480 mm	820 x 480 mm	BR5129
Low cabinet for console 1 pull-out compartment, 320 x 550 mm	320 x 550 mm	BR5130
Low cabinet for console 1 pull-out compartment, 420 x 550 mm	420 x 550 mm	BR5131
Low cabinet for console 1 pull-out compartment, 520 x 550 mm	520 x 550 mm	BR5132
Low cabinet for console 1 pull-out compartment, 620 x 550 mm	620 x 550 mm	BR5133
Low cabinet for console 1 pull-out compartment, 820 x 550 mm	820 x 550 mm	BR5134
Low cabinet for console 2 drawers, 320 x 550 mm	320 x 550 mm	BR5135
Low cabinet for console 2 drawers, 420 x 550 mm	420 x 550 mm	BR5136
Low cabinet for console 2 drawers, 520 x 550 mm	520 x 550 mm	BR5137
Low cabinet for console 2 drawers, 620 x 550 mm	620 x 550 mm	BR5138
Low cabinet for console 2 drawers, 820 x 550 mm	820 x 550 mm	BR5139
Low cabinet for console 1 pull-out compartment, 720 x 550 mm	720 x 550 mm	BR5154
Low cabinet for console compact 2 drawers, 720 x 480 mm	720 x 480 mm	BR5148
Low cabinet for console compact 1 pull-out compartment, 720 x 480 mm	720 x 480 mm	BR5143
Low cabinet for console 2 drawers, 720 x 550 mm	720 x 550 mm	BR5159
Low cabinet for console compact 1 pull-out compartment, 700 x 478 mm	700 x 478 mm	DS5343
Low cabinet for console compact 2 drawers, 700 x 478 mm	700 x 478 mm	DS5348
Low cabinet for console 1 pull-out compartment, 700 x 548 mm	700 x 548 mm	DS5354
Low cabinet for console 2 drawers, 700 x 548 mm	700 x 548 mm	DS5359
Vanity unit wall-mounted 1 pull-out compartment, 1 console with one cut-out, 800 x 550 mm	800 x 550 mm	DE4947
Vanity unit wall-mounted 1 pull-out compartment, 1 console with one cut-out, 1000 x 550 mm	1000 x 550 mm	DE4948
Vanity unit wall-mounted 1 pull-out compartment, 1 console with one cut-out, 1200 x 550 mm	1200 x 550 mm	DE4949

**Accessories Dividing system # UV984600000**

|&lt; 115 mm &gt;|

Vanity unit wall-mounted 2 pull-out compartments, 1 opened shelf incl. wooden floor, 1 countertop with one cut-out or two cut-outs, 1400 x 550 mm	1400 x 550 mm	DE4950 B/L/R
Vanity unit wall-mounted 1 drawer, 1 pull-out compartment, upper drawer including cut-out for siphon and siphon cover, 1 console with one cut-out, 800 x 550 mm	800 x 550 mm	DE4967
Vanity unit wall-mounted 1 drawer, 1 pull-out compartment, upper drawer including cut-out for siphon and siphon cover, 1 console with one cut-out, 1000 x 550 mm	1000 x 550 mm	DE4968
Vanity unit wall-mounted 1 drawer, 1 pull-out compartment, upper drawer including cut-out for siphon and siphon cover, 1 console with one cut-out, 1200 x 550 mm	1200 x 550 mm	DE4969
Vanity unit wall-mounted 2 drawers, 2 pull-out compartments, drawer beneath basin including cut-out for siphon and siphon cover, 1 opened shelf incl. wooden floor, 1 countertop with one cut-out or two cut-outs, 1400 x 550 mm	1400 x 550 mm	DE4970 B/L/R

*All drawings contain the necessary measurements which are subject to standard tolerances. They are stated in mm and are non-binding. Exact measurements, in particular for customised installation scenarios, can only be taken from the finished piece.*