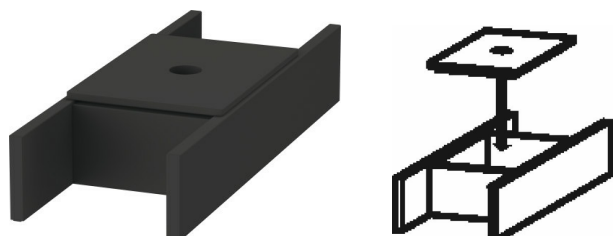


**Accessories Dividing system # UV984500000**

|&lt; 115 mm &gt;|



Dividing system	Dimension	Weight	Order number
Individual and retrofittable dividing system with cover, Black diamond, for vanity unit			
<b>Colors</b>			
M00			
<b>Variant</b>			
	115 x 320 mm		UV984500000
<b>Suitable products</b>			
Vanity unit wall-mounted 1 pull-out compartment, for Starck 3 # 030470, 650 x 455 mm	650 x 455 mm		KT6663
Vanity unit wall-mounted 1 pull-out compartment, for Starck 3 # 030480, 800 x 455 mm	800 x 455 mm		KT6664
Vanity unit wall-mounted 1 pull-out compartment, for Starck 3 # 030410, 1000 x 455 mm	1000 x 455 mm		KT6665
Vanity unit wall-mounted 1 pull-out compartment, for Starck 3 # 033213, 1200 x 455 mm	1200 x 455 mm		KT6666
Vanity unit wall-mounted 2 drawers, upper drawer including cut-out for siphon and siphon cover, for Starck 3 # 030470, 650 x 455 mm	650 x 455 mm		KT6643
Vanity unit wall-mounted 2 drawers, upper drawer including cut-out for siphon and siphon cover, for Starck 3 # 030480, 800 x 455 mm	800 x 455 mm		KT6644
Vanity unit wall-mounted 2 drawers, upper drawer including cut-out for siphon and siphon cover, for Starck 3 # 030410, 1000 x 455 mm	1000 x 455 mm		KT6645
Vanity unit wall-mounted 2 drawers, upper drawer including cut-out for siphon and siphon cover, for Starck 3 # 033213, 1200 x 455 mm	1200 x 455 mm		KT6646
Vanity unit wall-mounted 1 pull-out compartment, for D-Code # 034285, 800 x 455 mm	800 x 455 mm		KT6667
Vanity unit wall-mounted 1 pull-out compartment, for D-Code # 034210, 1000 x 455 mm	1000 x 455 mm		KT6668

**Accessories Dividing system # UV984500000**

|&lt; 115 mm &gt;|

Vanity unit wall-mounted 2 drawers, upper drawer including cut-out for siphon and siphon cover, for D-Code # 034285, 800 x 455 mm	800 x 455 mm	KT6647
Vanity unit wall-mounted 2 drawers, upper drawer including cut-out for siphon and siphon cover, for D-Code # 034210, 1000 x 455 mm	1000 x 455 mm	KT6648
Vanity unit wall-mounted 1 pull-out compartment, for Vero # 045450, 450 x 440 mm	450 x 440 mm	KT6685
Vanity unit wall-mounted 1 pull-out compartment, for Vero # 045460, 550 x 440 mm	550 x 440 mm	KT6686
Vanity unit wall-mounted 1 pull-out compartment, for Vero # 045480, 750 x 440 mm	750 x 440 mm	KT6687
Vanity unit wall-mounted 1 pull-out compartment, for Vero # 045410, 950 x 440 mm	950 x 440 mm	KT6688
Vanity unit wall-mounted 1 pull-out compartment, for Vero # 045412, 1150 x 440 mm	1150 x 440 mm	KT6689
Vanity unit wall-mounted 2 drawers, upper drawer including cut-out for siphon and siphon cover, for Vero # 045450, 450 x 440 mm	450 x 440 mm	KT6635
Vanity unit wall-mounted 2 drawers, upper drawer including cut-out for siphon and siphon cover, for Vero # 045460, 550 x 440 mm	550 x 440 mm	KT6636
Vanity unit wall-mounted 2 drawers, upper drawer including cut-out for siphon and siphon cover, for Vero # 045480, 750 x 440 mm	750 x 440 mm	KT6637
Vanity unit wall-mounted 2 drawers, upper drawer including cut-out for siphon and siphon cover, for Vero # 045410, 950 x 440 mm	950 x 440 mm	KT6638
Vanity unit wall-mounted 2 drawers, upper drawer including cut-out for siphon and siphon cover, for Vero # 045412, 1150 x 440 mm	1150 x 440 mm	KT6639
Vanity unit wall-mounted 1 pull-out compartment, for Vero # 032985, 800 x 455 mm	800 x 455 mm	KT6690
Vanity unit wall-mounted 1 pull-out compartment, for Vero # 032910, 1000 x 455 mm	1000 x 455 mm	KT6691
Vanity unit wall-mounted 2 drawers, upper drawer including cut-out for siphon and siphon cover, for Vero # 032985, 800 x 455 mm	800 x 455 mm	KT6640
Vanity unit wall-mounted 2 drawers, upper drawer including cut-out for siphon and siphon cover, for Vero # 032910, 1000 x 455 mm	1000 x 455 mm	KT6641
Vanity unit wall-mounted 2 drawers, upper drawer including cut-out for siphon and siphon cover, for Vero # 032912, 1200 x 455 mm	1200 x 455 mm	KT6642
Vanity unit wall-mounted 1 pull-out compartment, for D-Code # 034265, 600 x 455 mm	600 x 455 mm	KT6670
Vanity unit wall-mounted 1 pull-out compartment, for D-Code # 034812, 1150 x 455 mm	1150 x 455 mm	KT6669

**Accessories Dividing system # UV984500000**

|&lt; 115 mm &gt;|

Vanity unit wall-mounted 2 drawers, upper drawer including cut-out for siphon and siphon cover, for D-Code # 034265, 600 x 455 mm	600 x 455 mm	KT6650
Vanity unit wall-mounted 2 drawers, upper drawer including cut-out for siphon and siphon cover, for D-Code # 034812, 1150 x 455 mm	1150 x 455 mm	KT6649
Vanity unit wall-mounted 1 pull-out compartment, for Vero # 045470, 650 x 440 mm	650 x 440 mm	KT6684
Vanity unit wall-mounted 2 drawers, upper drawer including cut-out for siphon and siphon cover, for Vero # 045470, 650 x 440 mm	650 x 440 mm	KT6624
Vanity unit wall-mounted 1 pull-out compartment, for DuraStyle # 232065, 580 x 448 mm	580 x 448 mm	DS6380
Vanity unit wall-mounted 1 pull-out compartment, for DuraStyle # 232080, 730 x 448 mm	730 x 448 mm	DS6381
Vanity unit wall-mounted 1 pull-out compartment, for DuraStyle # 232010, 930 x 448 mm	930 x 448 mm	DS6382
Vanity unit wall-mounted 2 drawers, upper drawer including cut-out for siphon and siphon cover, for DuraStyle # 232065, 580 x 448 mm	580 x 448 mm	DS6480
Vanity unit wall-mounted 2 drawers, upper drawer including cut-out for siphon and siphon cover, for DuraStyle # 232080, 730 x 448 mm	730 x 448 mm	DS6481
Vanity unit wall-mounted 2 drawers, upper drawer including cut-out for siphon and siphon cover, for DuraStyle # 232010, 930 x 448 mm	930 x 448 mm	DS6482
Vanity unit wall-mounted 1 pull-out compartment, for D-Code # 034265, 600 x 453 mm	600 x 453 mm	DS6383
Vanity unit wall-mounted 1 pull-out compartment, for D-Code # 034285, 800 x 453 mm	800 x 453 mm	DS6384
Vanity unit wall-mounted 1 pull-out compartment, for D-Code # 034210, 1000 x 453 mm	1000 x 453 mm	DS6385
Vanity unit wall-mounted 2 drawers, upper drawer including cut-out for siphon and siphon cover, for D-Code # 034265, 600 x 453 mm	600 x 453 mm	DS6483
Vanity unit wall-mounted 2 drawers, upper drawer including cut-out for siphon and siphon cover, for D-Code # 034285, 800 x 453 mm	800 x 453 mm	DS6484
Vanity unit wall-mounted 2 drawers, upper drawer including cut-out for siphon and siphon cover, for D-Code # 034210, 1000 x 453 mm	1000 x 453 mm	DS6485
Vanity unit wall-mounted 1 pull-out compartment, for Starck 3 # 030470, 650 x 470 mm	650 x 470 mm	DS6387
Vanity unit wall-mounted 1 pull-out compartment, for Starck 3 # 030480, 800 x 470 mm	800 x 470 mm	DS6388
Vanity unit wall-mounted 1 pull-out compartment, for Starck 3 # 030410, 1000 x 470 mm	1000 x 470 mm	DS6389
Vanity unit wall-mounted 2 drawers, upper drawer including cut-out for siphon and siphon cover, for Starck 3 # 030470, 650 x 470 mm	650 x 470 mm	DS6487

**Accessories Dividing system # UV984500000**

|&lt; 115 mm &gt;|

Vanity unit wall-mounted 2 drawers, upper drawer including cut-out for siphon and siphon cover, for Starck 3 # 030480, 800 x 470 mm	800 x 470 mm	DS6488
Vanity unit wall-mounted 2 drawers, upper drawer including cut-out for siphon and siphon cover, for Starck 3 # 030410, 1000 x 470 mm	1000 x 470 mm	DS6489
Vanity unit wall-mounted 2 drawers, upper drawer including cut-out for siphon and siphon cover, for Starck 3 # 033213, 1200 x 470 mm	1200 x 470 mm	DS6490
Vanity unit wall-mounted 2 drawers, upper drawer including cut-out for siphon and siphon cover, for D-Code # 034812, 1150 x 453 mm	1150 x 453 mm	DS6486
Vanity unit wall-mounted 2 drawers, upper drawer including cut-out for siphon and siphon cover, for DuraStyle # 232012, 1130 x 448 mm	1130 x 448 mm	DS6495
Vanity unit wall-mounted 1 pull-out compartment, for Starck 3 # 033213, 1200 x 470 mm	1200 x 470 mm	DS6390
Vanity unit wall-mounted 1 pull-out compartment, for DuraStyle # 232012, 1130 x 448 mm	1130 x 448 mm	DS6395
Vanity unit wall-mounted 1 pull-out compartment, for D-Code # 034812, 1150 x 453 mm	1150 x 453 mm	DS6386
Vanity unit wall-mounted 1 pull-out compartment, Shelf element laterally, for DuraStyle # 232680 basin right, 730 x 448 mm	730 x 448 mm	DS6393
Vanity unit wall-mounted 1 pull-out compartment, Shelf element laterally, for DuraStyle # 232580 basin left, 730 x 448 mm	730 x 448 mm	DS6394
Vanity unit wall-mounted 1 pull-out compartment, Shelf element laterally, for DuraStyle # 232510 basin left, 930 x 448 mm	930 x 448 mm	DS6397
Vanity unit wall-mounted 1 pull-out compartment, Shelf element laterally, for DuraStyle # 232610 basin right, 930 x 448 mm	930 x 448 mm	DS6396
Vanity unit wall-mounted 1 pull-out compartment, for DuraStyle # 233813, 1230 x 448 mm	1230 x 448 mm	DS6398
Vanity unit wall-mounted 2 drawers, upper drawer including cut-out for siphon and siphon cover, for DuraStyle # 233813, 1230 x 448 mm	1230 x 448 mm	DS6498
Vanity unit wall-mounted compact 2 drawers, upper drawer including cut-out for siphon and siphon cover, for DuraStyle # 233763, 580 x 368 mm	580 x 368 mm	DS6479
Vanity unit wall-mounted 1 pull-out compartment, for ME by Starck # 233663, 600 x 475 mm	600 x 475 mm	KT6418
Vanity unit wall-mounted 1 pull-out compartment, for ME by Starck # 233683, 234583, 234683, 800 x 475 mm	800 x 475 mm	KT6419
Vanity unit wall-mounted 1 pull-out compartment, for ME by Starck # 233610, 1000 x 475 mm	1000 x 475 mm	KT6420
Vanity unit wall-mounted 1 pull-out compartment, for ME by Starck # 233612, 236112, 1200 x 475 mm	1200 x 475 mm	KT6421

**Accessories Dividing system # UV984500000**

|&lt; 115 mm &gt;|

Vanity unit wall-mounted 2 drawers, upper drawer including cut-out for siphon and siphon cover, for ME by Starck # 233663, 600 x 475 mm	600 x 475 mm	KT6428
Vanity unit wall-mounted 2 drawers, upper drawer including cut-out for siphon and siphon cover, for ME by Starck # 233683, 800 x 475 mm	800 x 475 mm	KT6429
Vanity unit wall-mounted 2 drawers, upper drawer including cut-out for siphon and siphon cover, for ME by Starck # 233610, 1000 x 475 mm	1000 x 475 mm	KT6430
Vanity unit wall-mounted 2 drawers, upper drawer including cut-out for siphon and siphon cover, for ME by Starck # 233612, 1200 x 475 mm	1200 x 475 mm	KT6431
Vanity unit wall-mounted 2 drawers, upper drawer including cut-out for siphon and siphon cover, for ME by Starck # 233613, 1270 x 475 mm	1270 x 475 mm	KT6432
Vanity unit wall-mounted 4 drawers, upper drawer including cut-out for siphon and siphon cover, for ME by Starck # 233613, 1270 x 475 mm	1270 x 475 mm	KT6433
Vanity unit wall-mounted 1 pull-out compartment, for ME by Starck # 233663, 620 x 479 mm	620 x 479 mm	BR4001
Vanity unit wall-mounted 1 pull-out compartment, for ME by Starck # 233683, 820 x 479 mm	820 x 479 mm	BR4002
Vanity unit wall-mounted 1 pull-out compartment, for ME by Starck # 233610, 1020 x 479 mm	1020 x 479 mm	BR4003
Vanity unit wall-mounted 1 pull-out compartment, for ME by Starck # 233612, 1220 x 479 mm	1220 x 479 mm	BR4004
Vanity unit wall-mounted 2 drawers, upper drawer including cut-out for siphon and siphon cover, for ME by Starck # 233663, 620 x 479 mm	620 x 479 mm	BR4101
Vanity unit wall-mounted 2 drawers, upper drawer including cut-out for siphon and siphon cover, for ME by Starck # 233683, 820 x 479 mm	820 x 479 mm	BR4102
Vanity unit wall-mounted 2 drawers, upper drawer including cut-out for siphon and siphon cover, for ME by Starck # 233610, 1020 x 479 mm	1020 x 479 mm	BR4103
Vanity unit wall-mounted 2 drawers, upper drawer including cut-out for siphon and siphon cover, for ME by Starck # 233612, 1220 x 479 mm	1220 x 479 mm	BR4104
Vanity unit wall-mounted 2 drawers, upper drawer including cut-out for siphon and siphon cover, for ME by Starck # 233613, 1290 x 479 mm	1290 x 479 mm	BR4105
Vanity unit wall-mounted 4 drawers, upper drawer including cut-out for siphon and siphon cover, for ME by Starck # 233613, 1290 x 479 mm	1290 x 479 mm	BR4106
Vanity unit wall-mounted 1 pull-out compartment, Shelf element laterally, for ME by Starck # 234583 bowl on left side, 820 x 479 mm	820 x 479 mm	BR4012
Vanity unit wall-mounted 1 pull-out compartment, Shelf element laterally, for ME by Starck # 234683 bowl on right side, 820 x 479 mm	820 x 479 mm	BR4014

**Accessories Dividing system # UV984500000**

|&lt; 115 mm &gt;|

Vanity unit wall-mounted 1 pull-out compartment, for Starck 3 # 030470, 670 x 469 mm	670 x 469 mm	BR4041
Vanity unit wall-mounted 1 pull-out compartment, for Starck 3 # 030480, 820 x 469 mm	820 x 469 mm	BR4042
Vanity unit wall-mounted 1 pull-out compartment, for Starck 3 # 030410, 1020 x 469 mm	1020 x 469 mm	BR4043
Vanity unit wall-mounted 1 pull-out compartment, for Starck 3 # 033213, 1220 x 469 mm	1220 x 469 mm	BR4044
Vanity unit wall-mounted 2 drawers, upper drawer including cut-out for siphon and siphon cover, for Starck 3 # 030470, 670 x 469 mm	670 x 469 mm	BR4141
Vanity unit wall-mounted 2 drawers, upper drawer including cut-out for siphon and siphon cover, for Starck 3 # 030480, 820 x 469 mm	820 x 469 mm	BR4142
Vanity unit wall-mounted 2 drawers, upper drawer including cut-out for siphon and siphon cover, for Starck 3 # 030410, 1020 x 469 mm	1020 x 469 mm	BR4143
Vanity unit wall-mounted 2 drawers, upper drawer including cut-out for siphon and siphon cover, for Starck 3 # 033213, 1220 x 469 mm	1220 x 469 mm	BR4144
Vanity unit wall-mounted 1 pull-out compartment, for D-Code # 034265, 620 x 469 mm	620 x 469 mm	BR4045
Vanity unit wall-mounted 1 pull-out compartment, for D-Code # 034285, 820 x 469 mm	820 x 469 mm	BR4046
Vanity unit wall-mounted 1 pull-out compartment, for D-Code # 034210, 1020 x 469 mm	1020 x 469 mm	BR4047
Vanity unit wall-mounted 1 pull-out compartment, for D-Code # 034812, 1170 x 469 mm	1170 x 469 mm	BR4048
Vanity unit wall-mounted 2 drawers, upper drawer including cut-out for siphon and siphon cover, for D-Code # 034265, 620 x 469 mm	620 x 469 mm	BR4145
Vanity unit wall-mounted 2 drawers, upper drawer including cut-out for siphon and siphon cover, for D-Code # 034285, 820 x 469 mm	820 x 469 mm	BR4146
Vanity unit wall-mounted 2 drawers, upper drawer including cut-out for siphon and siphon cover, for D-Code # 034210, 1020 x 469 mm	1020 x 469 mm	BR4147
Vanity unit wall-mounted 2 drawers, upper drawer including cut-out for siphon and siphon cover, for D-Code # 034812, 1170 x 469 mm	1170 x 469 mm	BR4148
Vanity unit wall-mounted 1 pull-out compartment, for Vero Air # 235050, 484 x 459 mm	484 x 459 mm	BR4052
Vanity unit wall-mounted 1 pull-out compartment, for Vero Air # 235060, 584 x 459 mm	584 x 459 mm	BR4053
Vanity unit wall-mounted 1 pull-out compartment, 684 x 459 mm	684 x 459 mm	BR4054
Vanity unit wall-mounted 1 pull-out compartment, for Vero Air # 235080, 784 x 459 mm	784 x 459 mm	BR4055

**Accessories Dividing system # UV984500000**

|&lt; 115 mm &gt;|

Vanity unit wall-mounted 1 pull-out compartment, for Vero Air # 235010, 984 x 459 mm	984 x 459 mm	BR4056
Vanity unit wall-mounted 1 pull-out compartment, for Vero Air # 235012, 1184 x 459 mm	1184 x 459 mm	BR4057
Vanity unit wall-mounted 2 drawers, upper drawer including cut-out for siphon and siphon cover, for Vero Air # 235050, 484 x 459 mm	484 x 459 mm	BR4152
Vanity unit wall-mounted 2 drawers, upper drawer including cut-out for siphon and siphon cover, for Vero Air # 235060, 584 x 459 mm	584 x 459 mm	BR4153
Vanity unit wall-mounted 2 drawers, upper drawer including cut-out for siphon and siphon cover, 684 x 459 mm	684 x 459 mm	BR4154
Vanity unit wall-mounted 2 drawers, for Vero Air # 235080, 784 x 459 mm	784 x 459 mm	BR4155
Vanity unit wall-mounted 2 drawers, upper drawer including cut-out for siphon and siphon cover, for Vero Air # 235010, 984 x 459 mm	984 x 459 mm	BR4156
Vanity unit wall-mounted 2 drawers, upper drawer including cut-out for siphon and siphon cover, for Vero Air # 235012, 1184 x 459 mm	1184 x 459 mm	BR4157
Vanity unit floor-standing 2 pull-out compartments, upper pull-out compartment including cut-out for siphon and siphon cover, for Starck 3 # 030470, 670 x 469 mm	670 x 469 mm	BR4421
Vanity unit floor-standing 2 pull-out compartments, upper pull-out compartment including cut-out for siphon and siphon cover, for Starck 3 # 030480, 820 x 469 mm	820 x 469 mm	BR4422
Vanity unit floor-standing 2 pull-out compartments, upper pull-out compartment including cut-out for siphon and siphon cover, for Starck 3 # 030410, 1020 x 469 mm	1020 x 469 mm	BR4423
Vanity unit floor-standing 2 pull-out compartments, upper pull-out compartment including cut-out for siphon and siphon cover, for Starck 3 # 033213, 1220 x 469 mm	1220 x 469 mm	BR4424
Vanity unit floor-standing 2 pull-out compartments, for D-Code # 034265, 620 x 469 mm	620 x 469 mm	BR4425
Vanity unit floor-standing 2 pull-out compartments, for D-Code # 034285, 820 x 469 mm	820 x 469 mm	BR4426
Vanity unit floor-standing 2 pull-out compartments, for D-Code # 034210, 1020 x 469 mm	1020 x 469 mm	BR4427
Vanity unit floor-standing 2 pull-out compartments, for D-Code # 034812, 1170 x 469 mm	1170 x 469 mm	BR4428
Vanity unit floor-standing 2 pull-out compartments, for Vero Air # 235050, 484 x 459 mm	484 x 459 mm	BR4432
Vanity unit floor-standing 2 pull-out compartments, for Vero Air # 235060, 584 x 459 mm	584 x 459 mm	BR4433
Vanity unit floor-standing 2 pull-out compartments, 684 x 459 mm	684 x 459 mm	BR4434
Vanity unit floor-standing 2 pull-out compartments, for Vero Air # 235080, 784 x 459 mm	784 x 459 mm	BR4435

**Accessories Dividing system # UV984500000**

|&lt; 115 mm &gt;|

Vanity unit floor-standing 2 pull-out compartments, for Vero Air # 235010, 984 x 459 mm	984 x 459 mm	BR4436
Vanity unit floor-standing 2 pull-out compartments, for Vero Air # 235012, 1184 x 459 mm	1184 x 459 mm	BR4437
Furniture washbasin c-bonded with vanity wall mounted 1 pull-out compartment, without overflow, with tap platform, ceramic covered slotted waste included, space saving siphon included, 600 x 480 mm	600 x 480 mm	BR4600 0/N
Furniture washbasin c-bonded with vanity wall mounted 1 pull-out compartment, without overflow, with tap platform, ceramic covered slotted waste included, space saving siphon included, 800 x 480 mm	800 x 480 mm	BR4601 N/O
Furniture washbasin c-bonded with vanity wall mounted 1 pull-out compartment, without overflow, with tap platform, ceramic covered slotted waste included, space saving siphon included, 1000 x 480 mm	1000 x 480 mm	BR4602 N/O
Furniture washbasin c-bonded with vanity wall mounted 1 pull-out compartment, without overflow, with tap platform, ceramic covered slotted waste included, space saving siphon included, 1200 x 480 mm	1200 x 480 mm	BR4603 N/O
Furniture washbasin c-bonded with vanity wall mounted 2 drawers, upper drawer including cut-out for siphon and siphon cover, without overflow, with tap platform, ceramic covered slotted waste included, space saving siphon included, 600 x 480 mm	600 x 480 mm	BR4605 N/O
Furniture washbasin c-bonded with vanity wall mounted 2 drawers, upper drawer including cut-out for siphon and siphon cover, without overflow, with tap platform, ceramic covered slotted waste included, space saving siphon included, 800 x 480 mm	800 x 480 mm	BR4606 N/O
Furniture washbasin c-bonded with vanity wall mounted 2 drawers, upper drawer including cut-out for siphon and siphon cover, without overflow, with tap platform, ceramic covered slotted waste included, space saving siphon included, 1000 x 480 mm	1000 x 480 mm	BR4607 N/O
Furniture washbasin c-bonded with vanity wall mounted 2 drawers, upper drawer including cut-out for siphon and siphon cover, without overflow, with tap platform, ceramic covered slotted waste included, space saving siphon included, 1200 x 480 mm	1200 x 480 mm	BR4608 N/O
Furniture washbasin c-bonded with vanity floor standing 2 pull-out compartments, without overflow, with tap platform, ceramic covered slotted waste included, space saving siphon included, 600 x 480 mm	600 x 480 mm	BR4700 N/O
Furniture washbasin c-bonded with vanity floor standing 2 pull-out compartments, without overflow, with tap platform, ceramic covered slotted waste included, space saving siphon included, 800 x 480 mm	800 x 480 mm	BR4701 N/O
Furniture washbasin c-bonded with vanity floor standing 2 pull-out compartments, without overflow, with tap platform, ceramic covered slotted waste included, space saving siphon included, 1000 x 480 mm	1000 x 480 mm	BR4702 N/O



**Accessories Dividing system # UV984500000**

|&lt; 115 mm &gt;|

Furniture washbasin c-bonded with vanity floor standing 2 pull-out compartments, without overflow, with tap platform, ceramic covered slotted waste included, space saving siphon included, 1200 x 480 mm	1200 x 480 mm	BR4703 N/O
Vanity unit wall-mounted 1 pull-out compartment, for Viu # 234463, 620 x 479 mm	620 x 479 mm	BR4210
Vanity unit wall-mounted 1 pull-out compartment, for Viu # 234473, 720 x 479 mm	720 x 479 mm	BR4211
Vanity unit wall-mounted 1 pull-out compartment, for Viu # 234483, 820 x 479 mm	820 x 479 mm	BR4212
Vanity unit wall-mounted 1 pull-out compartment, for Viu # 234410, 1020 x 479 mm	1020 x 479 mm	BR4213
Vanity unit wall-mounted 1 pull-out compartment, for Viu # 234412, 1220 x 479 mm	1220 x 479 mm	BR4214
Vanity unit wall-mounted 2 drawers, upper drawer including cut-out for siphon and siphon cover, for Viu # 234463, 620 x 479 mm	620 x 479 mm	BR4310
Vanity unit wall-mounted 2 drawers, upper drawer including cut-out for siphon and siphon cover, for Viu # 234473, 720 x 479 mm	720 x 479 mm	BR4311
Vanity unit wall-mounted 2 drawers, upper drawer including cut-out for siphon and siphon cover, for Viu # 234483, 820 x 479 mm	820 x 479 mm	BR4312
Vanity unit wall-mounted 2 drawers, upper drawer including cut-out for siphon and siphon cover, for Viu # 234410, 1020 x 479 mm	1020 x 479 mm	BR4313
Vanity unit wall-mounted 2 drawers, upper drawer including cut-out for siphon and siphon cover, for Viu # 234412, 1220 x 479 mm	1220 x 479 mm	BR4314
Vanity unit floor-standing 2 pull-out compartments, upper pull-out compartment including cut-out for siphon and siphon cover, for Viu # 234463, 620 x 479 mm	620 x 479 mm	BR4510
Vanity unit wall-mounted 1 pull-out compartment, for ME by Starck # 233663, 600 x 475 mm	600 x 475 mm	XB6030
Vanity unit wall-mounted 1 pull-out compartment, for ME by Starck # 233683, 800 x 475 mm	800 x 475 mm	XB6031
Vanity unit wall-mounted 1 pull-out compartment, for ME by Starck # 233610, 1000 x 475 mm	1000 x 475 mm	XB6032
Vanity unit wall-mounted 1 pull-out compartment, for ME by Starck # 233612, 236112, 1200 x 475 mm	1200 x 475 mm	XB6033
Vanity unit wall-mounted 1 pull-out compartment, for Starck 3 # 030470, 650 x 468 mm	650 x 468 mm	XB6035
Vanity unit wall-mounted 1 pull-out compartment, for Starck 3 # 030480, 800 x 468 mm	800 x 468 mm	XB6036
Vanity unit wall-mounted 1 pull-out compartment, for Starck 3 # 030410, 1000 x 468 mm	1000 x 468 mm	XB6037
Vanity unit wall-mounted 1 pull-out compartment, for Starck 3 # 033213, 1200 x 468 mm	1200 x 468 mm	XB6038

**Accessories Dividing system # UV984500000**

| &lt; 115 mm &gt; |

Vanity unit wall-mounted 1 pull-out compartment, for D-Code # 034265, 600 x 458 mm	600 x 458 mm	XB6070
Vanity unit wall-mounted 1 pull-out compartment, for D-Code # 034285, 800 x 458 mm	800 x 458 mm	XB6071
Vanity unit wall-mounted 1 pull-out compartment, for D-Code # 034210, 1000 x 458 mm	1000 x 458 mm	XB6072
Vanity unit wall-mounted 1 pull-out compartment, for D-Code # 034812, 1150 x 458 mm	1150 x 458 mm	XB6073
Vanity unit wall-mounted 1 pull-out compartment, for DuraStyle # 232065, 580 x 448 mm	580 x 448 mm	XB6075
Vanity unit wall-mounted 1 pull-out compartment, for DuraStyle # 232080, 730 x 448 mm	730 x 448 mm	XB6076
Vanity unit wall-mounted 1 pull-out compartment, for DuraStyle # 232010, 930 x 448 mm	930 x 448 mm	XB6077
Vanity unit wall-mounted 1 pull-out compartment, for DuraStyle # 232012, 1130 x 448 mm	1130 x 448 mm	XB6078
Vanity unit wall-mounted 2 drawers, upper drawer including cut-out for siphon and siphon cover, for ME by Starck # 233663, 600 x 475 mm	600 x 475 mm	XB6120
Vanity unit wall-mounted 2 drawers, upper drawer including cut-out for siphon and siphon cover, for ME by Starck # 233683, 800 x 475 mm	800 x 475 mm	XB6121
Vanity unit wall-mounted 2 drawers, upper drawer including cut-out for siphon and siphon cover, for ME by Starck # 233610, 1000 x 475 mm	1000 x 475 mm	XB6122
Vanity unit wall-mounted 2 drawers, upper drawer including cut-out for siphon and siphon cover, for ME by Starck # 233612, 1200 x 475 mm	1200 x 475 mm	XB6123
Vanity unit wall-mounted 2 drawers, upper drawer including cut-out for siphon and siphon cover, for Starck 3 # 030470, 650 x 468 mm	650 x 468 mm	XB6185
Vanity unit wall-mounted 2 drawers, upper drawer including cut-out for siphon and siphon cover, for Starck 3 # 030480, 800 x 468 mm	800 x 468 mm	XB6186
Vanity unit wall-mounted 2 drawers, upper drawer including cut-out for siphon and siphon cover, for Starck 3 # 030410, 1000 x 468 mm	1000 x 468 mm	XB6187
Vanity unit wall-mounted 2 drawers, upper drawer including cut-out for siphon and siphon cover, for Starck 3 # 033213, 1200 x 468 mm	1200 x 468 mm	XB6188
Vanity unit wall-mounted 2 drawers, upper drawer including cut-out for siphon and siphon cover, for D-Code # 034265, 600 x 458 mm	600 x 458 mm	XB6189
Vanity unit wall-mounted 2 drawers, upper drawer including cut-out for siphon and siphon cover, for D-Code # 034285, 800 x 458 mm	800 x 458 mm	XB6190
Vanity unit wall-mounted 2 drawers, upper drawer including cut-out for siphon and siphon cover, for D-Code # 034210, 1000 x 458 mm	1000 x 458 mm	XB6193

**Accessories Dividing system # UV984500000**

|&lt; 115 mm &gt;|

Vanity unit wall-mounted 2 drawers, upper drawer including cut-out for siphon and siphon cover, for D-Code # 034812, 1150 x 458 mm	1150 x 458 mm	XB6194
Vanity unit wall-mounted 2 drawers, upper drawer including cut-out for siphon and siphon cover, for DuraStyle # 232065, 580 x 448 mm	580 x 448 mm	XB6195
Vanity unit wall-mounted 2 drawers, upper drawer including cut-out for siphon and siphon cover, for DuraStyle # 232080, 730 x 448 mm	730 x 448 mm	XB6196
Vanity unit wall-mounted 2 drawers, upper drawer including cut-out for siphon and siphon cover, for DuraStyle # 232010, 930 x 448 mm	930 x 448 mm	XB6197
Vanity unit wall-mounted 2 drawers, upper drawer including cut-out for siphon and siphon cover, for DuraStyle # 232012, 1130 x 448 mm	1130 x 448 mm	XB6198
Vanity unit wall-mounted 1 pull-out compartment, for ME by Starck # 233613, 1275 x 475 mm	1275 x 475 mm	XB6034
Vanity unit wall-mounted 2 drawers, upper drawer including cut-out for siphon and siphon cover, for ME by Starck # 233613, 1275 x 475 mm	1275 x 475 mm	XB6130
Vanity unit wall-mounted 1 pull-out compartment, for ME by Starck # 233653, 510 x 402 mm	510 x 402 mm	DE4260
Vanity unit wall-mounted 1 pull-out compartment, for ME by Starck # 233663, 610 x 462 mm	610 x 462 mm	DE4261
Vanity unit wall-mounted 1 pull-out compartment, for ME by Starck # 233683, 234583, 234683, 810 x 462 mm	810 x 462 mm	DE4262
Vanity unit wall-mounted 1 pull-out compartment, for ME by Starck # 233610, 1010 x 462 mm	1010 x 462 mm	DE4263
Vanity unit wall-mounted 1 pull-out compartment, for ME by Starck # 233612, 236112, 1210 x 462 mm	1210 x 462 mm	DE4264
Vanity unit wall-mounted 1 pull-out compartment, for ME by Starck # 233613, 1280 x 462 mm	1280 x 462 mm	DE4265
Vanity unit wall-mounted 1 drawer, 1 pull-out compartment, upper drawer including cut-out for siphon and siphon cover, for ME by Starck # 233653, 510 x 402 mm	510 x 402 mm	DE4360
Vanity unit wall-mounted 1 drawer, 1 pull-out compartment, upper drawer including cut-out for siphon and siphon cover, for ME by Starck # 233663, 610 x 462 mm	610 x 462 mm	DE4361
Vanity unit wall-mounted 1 drawer, 1 pull-out compartment, upper drawer including cut-out for siphon and siphon cover, for ME by Starck # 233683, 810 x 462 mm	810 x 462 mm	DE4362
Vanity unit wall-mounted 1 drawer, 1 pull-out compartment, upper drawer including cut-out for siphon and siphon cover, for ME by Starck # 233610, 1010 x 462 mm	1010 x 462 mm	DE4363
Vanity unit wall-mounted 1 drawer, 1 pull-out compartment, upper drawer including cut-out for siphon and siphon cover, for ME by Starck # 233612, 236112, 1210 x 462 mm	1210 x 462 mm	DE4364
Vanity unit wall-mounted 1 drawer, 1 pull-out compartment, upper drawer including cut-out for siphon and siphon cover, for ME by Starck # 233613, 1280 x 462 mm	1280 x 462 mm	DE4365

**Accessories Dividing system # UV984500000**

|&lt; 115 mm &gt;|

Vanity unit wall-mounted 1 drawer, 1 pull-out compartment, upper drawer including cut-out for siphon and siphon cover, for ME by Starck # 234583 bowl on left side, 810 x 462 mm	810 x 462 mm	DE4366
Vanity unit wall-mounted 1 drawer, 1 pull-out compartment, upper drawer including cut-out for siphon and siphon cover, for ME by Starck # 234683 bowl on right side, 810 x 462 mm	810 x 462 mm	DE4367
Vanity unit wall-mounted 1 pull-out compartment, for D-Neo # 236780, 236980, 237080, 784 x 452 mm	784 x 452 mm	DE4255
Vanity unit wall-mounted 1 pull-out compartment, for D-Neo # 236710, 984 x 452 mm	984 x 452 mm	DE4256
Vanity unit wall-mounted 1 drawer, 1 pull-out compartment, upper drawer including cut-out for siphon and siphon cover, for D-Neo # 236765, 634 x 452 mm	634 x 452 mm	DE4354
Vanity unit wall-mounted 1 drawer, 1 pull-out compartment, upper drawer including cut-out for siphon and siphon cover, for D-Neo # 236780, 784 x 452 mm	784 x 452 mm	DE4355
Vanity unit wall-mounted 1 drawer, 1 pull-out compartment, upper drawer including cut-out for siphon and siphon cover, for D-Neo # 236710, 984 x 452 mm	984 x 452 mm	DE4356
Vanity unit wall-mounted 1 drawer, 1 pull-out compartment, upper drawer including cut-out for siphon and siphon cover, for D-Neo # 236980 bowl on left side, 784 x 452 mm	784 x 452 mm	DE4357
Vanity unit wall-mounted 1 drawer, 1 pull-out compartment, upper drawer including cut-out for siphon and siphon cover, for D-Neo # 237080 bowl on right side, 784 x 452 mm	784 x 452 mm	DE4358
Vanity unit wall-mounted 1 pull-out compartment, Shelf element laterally, for D-Neo # 237080 bowl on right side, 784 x 452 mm	784 x 452 mm	DE4257
Vanity unit wall-mounted 1 pull-out compartment, Shelf element laterally, for D-Neo # 236980 bowl on left side, 784 x 452 mm	784 x 452 mm	DE4258
Vanity unit wall-mounted 1 pull-out compartment, for Vero Air # 235050, 484 x 442 mm	484 x 442 mm	DE4270
Vanity unit wall-mounted 1 pull-out compartment, for Vero Air # 235060, 584 x 442 mm	584 x 442 mm	DE4271
Vanity unit wall-mounted 1 pull-out compartment, 684 x 442 mm	684 x 442 mm	DE4272
Vanity unit wall-mounted 1 pull-out compartment, for Vero Air # 235080, 784 x 442 mm	784 x 442 mm	DE4273
Vanity unit wall-mounted 1 pull-out compartment, for Vero Air # 235010, 984 x 442 mm	984 x 442 mm	DE4274
Vanity unit wall-mounted 1 pull-out compartment, for Vero Air # 235012, 1184 x 442 mm	1184 x 442 mm	DE4275
Vanity unit wall-mounted 1 drawer, 1 pull-out compartment, upper drawer including cut-out for siphon and siphon cover, 684 x 442 mm	684 x 442 mm	DE4372
Vanity unit wall-mounted 1 drawer, 1 pull-out compartment, upper drawer including cut-out for siphon and siphon cover, for Vero Air # 235080, 784 x 442 mm	784 x 442 mm	DE4373

**Accessories Dividing system # UV984500000**

|&lt; 115 mm &gt;|

Vanity unit wall-mounted 1 drawer, 1 pull-out compartment, upper drawer including cut-out for siphon and siphon cover, for Vero Air # 235010, 984 x 442 mm	984 x 442 mm	DE4374
Vanity unit wall-mounted 1 drawer, 1 pull-out compartment, upper drawer including cut-out for siphon and siphon cover, for Vero Air # 235012, 1184 x 442 mm	1184 x 442 mm	DE4375
Vanity unit wall-mounted 1 pull-out compartment, for D-Neo # 236765, 634 x 452 mm	634 x 452 mm	DE4254
Vanity unit wall-mounted 1 pull-out compartment, for Vero # 032912, 1200 x 455 mm	1200 x 455 mm	KT6692
Vanity unit floor-standing 2 pull-out compartments, upper pull-out compartment including cut-out for siphon and siphon cover, for Viu # 234473, 720 x 479 mm	720 x 479 mm	BR4511
Vanity unit floor-standing 2 pull-out compartments, upper pull-out compartment including cut-out for siphon and siphon cover, for Viu # 234483, 820 x 479 mm	820 x 479 mm	BR4512
Vanity unit floor-standing 2 pull-out compartments, upper pull-out compartment including cut-out for siphon and siphon cover, for Viu # 234410, 1020 x 479 mm	1020 x 479 mm	BR4513
Vanity unit floor-standing 2 pull-out compartments, upper pull-out compartment including cut-out for siphon and siphon cover, for Viu # 234412, 1220 x 479 mm	1220 x 479 mm	BR4514

*All drawings contain the necessary measurements which are subject to standard tolerances. They are stated in mm and are non-binding. Exact measurements, in particular for customised installation scenarios, can only be taken from the finished piece.*