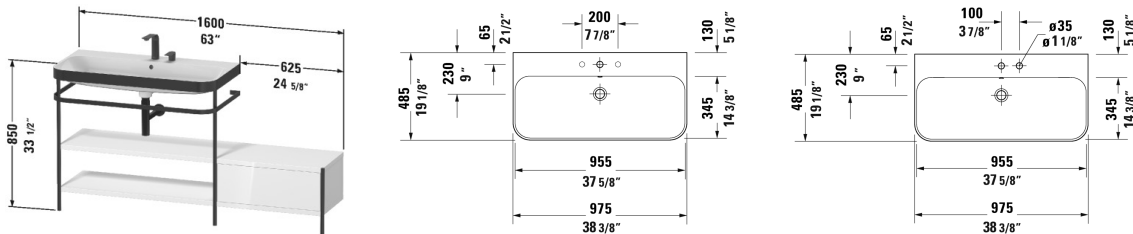


**Happy D.2 Plus Furniture washbasin c-bonded with metal console  
floorstanding # HP4753 E/N/O**

| < 63" Inch > |



| Furniture washbasin c-bonded with metal console floorstanding   | Dimension          | Weight | Order number |
|---|--------------------|--------|--------------|
| 2 wooden shelves, 1 towel rail, 1 drawer, lateral addition on the right, furniture washbasin Happy D.2 Plus included, with overflow, with faucet deck, acrylic cover below faucet deck, ceramic covered push-open waste included, metal console with integrated height adjustment   |                    |        |              |
| <b>Colors</b>   |                    |        |              |
| M22 White High Gloss (Decor) M36 White Satin Matte (Lacquer)<br>M39 Nordic White Satin Matte (Lacquer) M60 Taupe Satin Matte (Lacquer) M69 Brushed Walnut (Real wood veneer) M71 Mediterranean Oak (Real wood veneer) M75 Linen (Decor) M80 Graphite Super Matte M92 Stone Gray Satin Matte (Lacquer) M97 Light Blue Satin Matte (Lacquer) M98 Night Blue Satin Matte (Lacquer)   |                    |        |              |
| <b>Variant</b>  |                    |        |              |
|   | 63" x 19 1/4" Inch |        | HP4753 E/N/O |
| <b>Infobox</b>  |                    |        |              |
| The c-bonded frame is permanently bonded to the washbasin and delivered together with the disassembled metal console in one packaging unit, Washbasin not available with WonderGliss, Ceramic is additionally mounted to the wall, Hanger bolts for installation are not included in the delivery, please follow mounting instruction, Design siphon # 005036 is recommended, Required specification for ordering: - Finish of the wooden shelves and drawer, - Seat cushion # HP 9671 yes / no |                    |        |              |
| <b>Suitable products</b>  |                    |        |              |
| Seat cushion for metal console with lateral addition, 23 5/8" x 15" Inch  | 23 5/8" x 15" Inch |        | HP9671       |
| Design Siphon * ,   |                    |        | 005036       |

All drawings contain the necessary measurements which are subject to standard tolerances. They are stated in inch & mm and are non-binding. Exact measurements, in particular for customized installation scenarios, can only be taken from the finished ceramic piece.