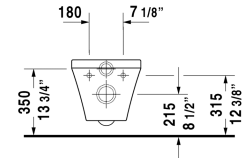
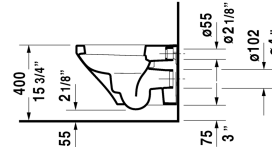
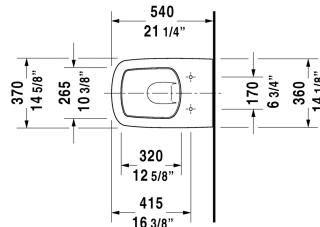


DuraStyle Toilet wall-mounted & # 253609..92 / 253609..92

< 14 5/8" Inch >



Toilet wall-mounted	Dimension	Weight	Order number
washdown model			
<b>Colors</b>			
00 White 20 HygieneGlaze (an antibacterial ceramic glaze that provides almost indefinite effectiveness)			
<b>Variant</b>			
◆ 1.6/0.8 gpf, cUPC® listed*	14 5/8" x 21 1/4" Inch	55.1 lb	253609..92
◆ 1.6/0.8 gpf, cUPC® listed*	14 5/8" x 21 1/4" Inch	55.1 lb	253609..92
<b>Infobox</b>			
* Complies with following standards: ASME A112.19.2/CSA B45.1 and ASME A112.19.14, Wall-mounted toilet is ADA compliant, when installed with a seat height of 17" - 19" from the finished floor, In-wall tank & carrier and actuator plate required for installation			
Sanitary ceramics with the special WonderGliss surface finish will remain clean and attractive-looking for a long time to come. When ordering WonderGliss please add a "1" as eleventh digit to the model number.			
Actuator plate A1, for toilet, plastic mechanical actuation, for surface mounted installation, dual flush, mounting frame, mounting hardware included, push rods, front plate plastic	8 1/2" x 5 3/4" Inch	0.7 lb	WD5008
Toilet in-wall tank & carrier, Standard for toilets with a projection of ≤ 24 5/8", adjustable feet 0" - 9 1/2", SensoWash ready, mechanical front flush actuation, includes in-wall tank, marking of filling height, dual flush, insulated against condensation, Scope of delivery, HDPE wall-mounted toilet connection bend DN 90/90, PE wall-mounted toilet connection set DN 90, wall-mounted mounting rods M12, mounting hardware included, 2 bolt caps, cUPC® listed*	23 1/4" x 45 1/4" Inch	35.3 lb	WD1022
Noise reduction gasket for wall-mounted toilet		0.7 lb	005064
<b>Suitable products</b>			
Toilet seat and cover hinges stainless steel, without slow close,			006371

DuraStyle Toilet wall-mounted & # 253609..92 / 253609..92

|< 14 5/8" Inch >|

Toilet seat and cover hinges stainless steel, removable, with slow close,

006379

*All drawings contain the necessary measurements which are subject to standard tolerances. They are stated in inch & mm and are non-binding. Exact measurements, in particular for customized installation scenarios, can only be taken from the finished ceramic piece.*