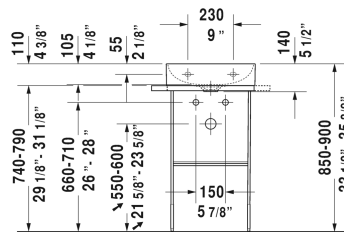
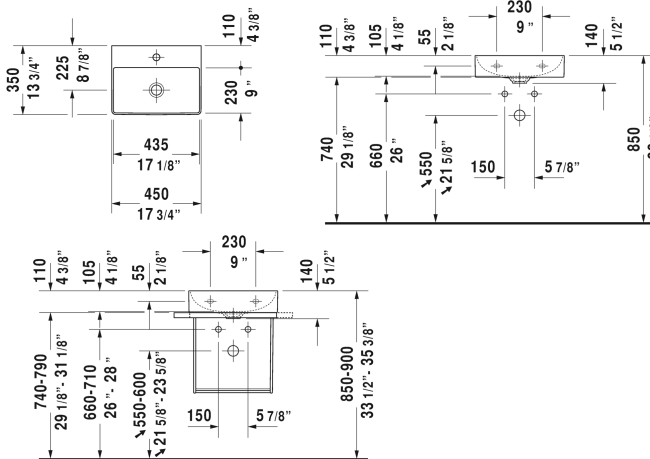


**DuraSquare Furniture handrinse basin # 0732450041 / 0732450070**

| < 17 3/4" Inch > |



| Furniture handrinse basin  | Dimension              | Weight  | Order number |
|--|------------------------|---------|--------------|
| without overflow, with faucet deck, ceramic covered slotted waste included, underside fully glazed, hardware included, wall-mounted, 17 3/4" Inch  |                        |         |              |
| <b>Colors</b>  |                        |         |              |
| 00 White   |                        |         |              |
| <b>Variant</b>   |                        |         |              |
| ●  | 17 3/4" x 13 3/4" Inch | 21.8 lb | 0732450041   |
| ⊗  | 17 3/4" x 13 3/4" Inch | 21.8 lb | 0732450070   |
| <b>Infobox</b>   |                        |         |              |
| Metal console: Towel rail can be mounted right or left , Made of DuraCeram, For glass inserts matching to furniture lacquer finishes, please see page XXX  |                        |         |              |
| Sanitary ceramics with the special WonderGliss surface finish will remain clean and attractive-looking for a long time to come.<br>When ordering WonderGliss please add a "1" as eleventh digit to the model number. |                        |         |              |
| <b>Suitable products</b>   |                        |         |              |
| Metal console floorstanding ** height adjustable +2", hardware included, for handrinse basin # 073245, towel rail right or left, reversible, 20 1/4" x 13 1/8" Inch  | 20 1/4" x 13 1/8" Inch |         | 003109       |
| Metal console wall-mounted ** hardware included, for handrinse basin # 073245, towel rail right or left, reversible, 20 1/4" x 13 1/8" Inch  | 20 1/4" x 13 1/8" Inch |         | 003110       |

**DuraSquare Furniture handrinse basin # 0732450041 /  
0732450070**

|< 17 3/4" Inch >|

|  |                        |            |
|--|------------------------|------------|
| Glass inserts safety glass, for metal console # 003109, 003110,<br>16 1/2" x 10 3/8" Inch                                    | 16 1/2" x 10 3/8" Inch | 009966     |
| Vanity unit wall-mounted 1 door, for DuraSquare # 073245, 17<br>1/8" x 13 3/8" Inch  | 17 1/8" x 13 3/8" Inch | XS4060 L/R |
| Vanity unit floorstanding 1 door, integrated legs with height<br>adjustment, for DuraSquare # 073245, 17 1/8" x 13 3/8" Inch | 17 1/8" x 13 3/8" Inch | XS4441 L/R |

*All drawings contain the necessary measurements which are subject to standard tolerances. They are stated in inch & mm and are non-binding. Exact measurements, in particular for customized installation scenarios, can only be taken from the finished ceramic piece.*