

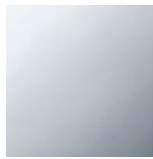


Bathtub - Tara.

Volume Control clockwise-closing 3/4" - polished chrome

Article number: 36 608 882-00

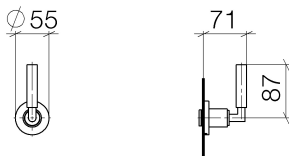
- Flange diameter 2-1/8"
- Ceramic disc cartridge
- (ADA)



polished chrome

Accessory is required for this item.

Dimensional drawing



All dimensions in mm / inch = mm x 0,0394



Bathtub - Tara.

Volume Control clockwise-closing 3/4" - polished chrome

Article number: 36 608 882-00



Bathtub - Tara.

Volume Control clockwise-closing 3/4" - polished chrome

Article number: 36 608 882-00

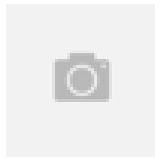
Other surface finishes



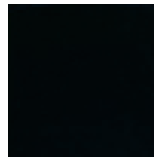
platinum matte
36 608 882-06



platinum
36 608 882-08



Brushed Durabrass
36 608 882-28



black matte
36 608 882-33



Dark Platinum matte
36 608 882-99

More custom finish options are available via special production (xTra Service). Please see our finish matrix for availability and pricing or contact a Dornbracht representative.

Required article



35 608 970-90 0010

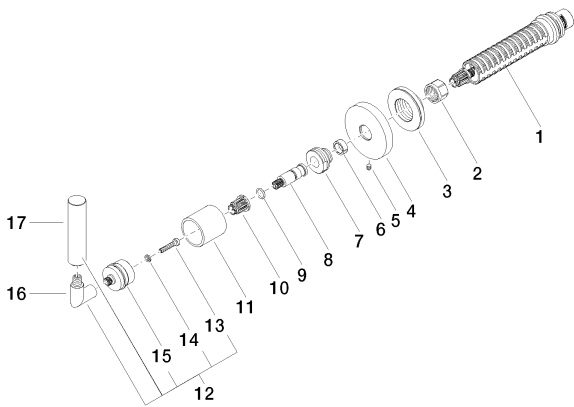
Rough for volume control 3/4"

-

Bathtub - Tara.

Volume Control clockwise-closing 3/4" - polished chrome

Article number: 36 608 882-00



Spare parts list

Number	Item Number	Designation	Number of units
1	90 90 03 127 00 90	top	1
2	09 23 30 023 90	nut	1
3	09 21 02 108 90	disc	1
4	09 27 89 115-00	rosette	1
5	09 31 11 007 90	pin	1
6	09 14 15 020 90	ring	1
7	09 24 05 002 90	nipple	1
8	09 29 06 022 90	spindle	1
9	09 14 10 060 90	seal	1
10	09 12 12 002 90	fixing cap	1
11	09 21 02 144-00	sleeve	1
12	04 20 88 052 00-00	handle	1
13	09 30 30 075 90	screw	1
14	09 30 11 029 90	disc	1
15	90 12 12 007 00-00	base	1
16	04 18 20 022 00-00	angle	1
17	09 20 88 052-00	handle	1